

LAND CORNER RECORDATION CERTIFICATE

Filing Requirement of Act 74, Mich. PA 1970

For Corners In: <u>Kalkaska</u> (County)	Located In T <u>27N</u> R <u>8W</u>	Corner Code # <u>C11</u>
1. Public Land Survey	T _____ R _____	_____
2. Property Controlling in Section	S _____ T _____ R _____	_____
3. Miscellaneous Property in Section	S _____ T _____ R _____	_____

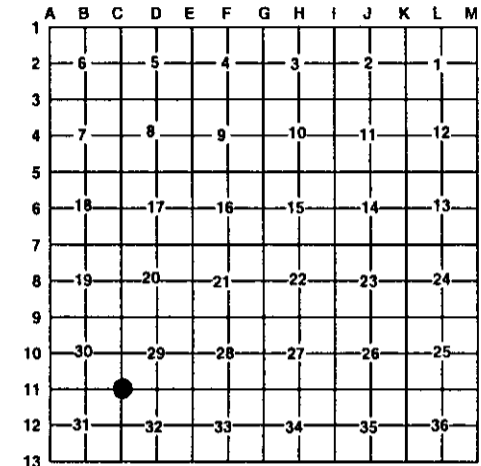
Register of Deeds Stamp & File Number

4. Lot No: _____ Recorded Plat: _____

5. Private Claims: _____

I, Craig W. McVean, in a field survey on July 15, 2002 do hereby state that under requirements of PA 74, Michigan PA of 1970, the corner points mentioned in lines 1 and 2 above were in conformance with regulations and rules therefore as required in the current manual of survey instructions of the United States Department of the Interior, Bureau of Land Management or by a decree of a Court of Law and/or that the corner points mentioned in lines 3, 4 and 5 above were in conformance with the rules of the Michigan Board of Land Surveyors or by a Decree of a Court of Law; established, re-established, monumented, recovered, found as expressed below:

NOTE: Not more than 2 corners, all in the same town and range, may be recorded on this certificate.



A. Description of original monument and accessories and/or subsequent restoration:

- | | |
|--|--|
| <p><u>C11</u> – GLO – set post – L. Lyon - 1850
 Blk. Ash 9" S40°W 20 L.
 Cedar 6" N88°E 14 L.
 - M. Schaaf – 1933 – N. Random
 between 31-32, 80.46 CH - 69 L. West
 of Post. Corrected 20, 40 & 60 ch stakes.
 - Wm. Richards – 1967 – 1 1/4" pipe in concrete
 - LCRC- L. 1, P. 321 – J. L. Fletcher-1974
 Fd. 3" pipe (in conc.) Replaced with concrete monument
 Nail in 10" Poplar S. 161.10';
 nail in 14" Poplar S85°W 156.73'</p> | <p>- LCRC L.3, P. 30 – M.D. Mileski – 1993
 Fd. 4" x 36" Cylindrical concrete monument
 10" Poplar S. 161.10'; 14" Poplar S85°W 156.73'
 - Record Surveys: L. 1, P. 639 – 1975; L. 1, P. 850 – 1975;
 L. 1, P. 863 & 864 – 1976; L. 2, P. 569 - 1980</p> |
|--|--|

B. Description of corner evidence found and/or method applies in restoring or re-establishing corner:

C11 – Section corner common to Sec. 29, 30, 31 & 32. – Fd. Broken 4" round concrete monument with 1/2" iron per recorded LCRC's & surveys. Fd. one dead witness by Fletcher. M. Schaaf indicates he established or found this corner in 1933. We found Schaaf monuments – 1 1/4" x 3" to 5" long iron pipe in square concrete tablets – 1/4, 1/2 & 3/4 mile S of this position. Also Schaaf position is at 'C13'. By projecting the Schaaf positions from the South, Northerly a calculated position is 7'+/- W & 9' ± North is determined. Search at this calculated position but found nothing. Dug around concrete monument & found pieces of Schaaf's concrete block monument around the existing concrete monument. Thus it appears that Fletcher recovered Schaaf's monument. Measured N 221' (GLO – 219') to North bank of Boardman River & East 308'± 3' (363' – GLO) to SW'ly bank of Boardman River. 4" concrete monument accepted as the best available evidence of the position of the original corner.

C. Description of monument for corner and accessories established to perpetuate locating the position of the corner:

C11 – Cut off 9" of 1/2" Rebar in the broken 4" concrete monument. Epoxied 2" aluminum cap to top of 1/2" Rebar in 4" round concrete monument, just above surface. NE 1' to set blue carsonite post.
 N40°E 123.11' to set N & T in NW side 14" Cottonwood
 N80°W 142.51' to set N & T in S side 10" Willow
 S6°W 187.80' to set N & T in W side 7" Cherry
 N23°W 63.28' to set 1/2" x 24" Rebar
 Steel fence post on S. side monument

Signed by: Craig W. McVean
 Surveyor's Michigan License No.: 39088

Date: 12/12/2003

