

LAND CORNER RECORDATION CERTIFICATE
Filing Requirement of Act 74, Mich. P.A. 1970

For corners in

KALKASKA
(County)

Located In:

Corner Code =#

- | | | | |
|------------------------------------|-------------|--------------|-------------|
| 1. Public Land Survey | T | R | |
| | T | R | |
| | T | R | |
| | T | R | |
| 2. Property Controlling in Section | S <u>31</u> | T <u>28N</u> | R <u>6W</u> |
| | S | T | R |
| 3. Miscellaneous Property in Sec. | S | T | R |
| | S | T | R |
4. Lot No. _____, Recorded Plat _____
5. Private Claims _____

Register of Deeds Stamp & File Number

I, CARL F. ROSER, in a field survey on July 22, 1986, do hereby certify that under requirements of P.A. 74, Michigan P.A. of 1970, the corner points mentioned in lines 1 and 2 above were in conformance with regulations and rules therefore as required in the current manual of survey instructions of the United States Department of the Interior, Bureau of Land Management or by a decree of a Court of Law and/or that the corner points mentioned in lines 3, 4 and 5 above were in conformance with the rules of the Michigan Board of Land Surveyors or by a Decree of a Court of Law, established, re-established, monumented, re-monumented, recovered, found as expressed below:

| | | | | | | | | | | | | | |
|----|----|----|----|----|----|----|---|---|---|---|---|---|---|
| | A | B | C | D | E | F | G | H | I | J | K | L | M |
| 2 | 6 | 5 | 4 | 3 | 2 | 1 | | | | | | | |
| 3 | | | | | | | | | | | | | |
| 4 | 7 | 8 | 9 | 10 | 11 | 12 | | | | | | | |
| 5 | | | | | | | | | | | | | |
| 6 | 18 | 17 | 16 | 15 | 14 | 13 | | | | | | | |
| 7 | | | | | | | | | | | | | |
| 8 | 19 | 20 | 21 | 22 | 23 | 24 | | | | | | | |
| 9 | | | | | | | | | | | | | |
| 10 | 30 | 29 | 28 | 27 | 26 | 25 | | | | | | | |
| 11 | | | | | | | | | | | | | |
| 12 | 31 | 32 | 33 | 34 | 35 | 36 | | | | | | | |
| 13 | | | | | | | | | | | | | |

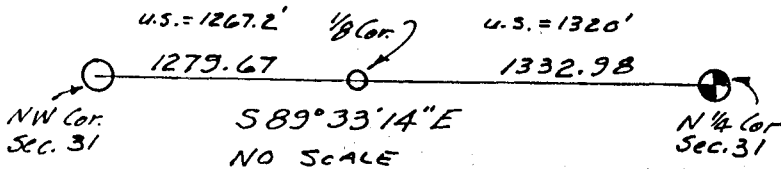
NOTE: Not more than 4 corners, all in the same town and range, may be recorded on this certificate.

A. Description of original monument and accessories and/or subsequent restoration:

B. Description of corner evidence found and/or method applied in restoring or reestablishing corner:

West 1/8 Corner on North Line of Sec. 31, T28N-R6W.

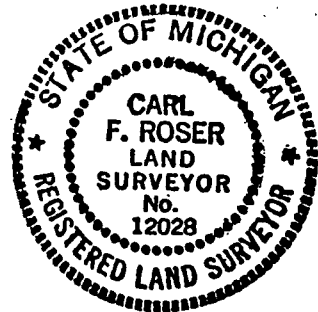
Note: The above cor. was inadvertently set in error mid-way & on line between the NW & N1/4 cor. of Sec. 31 on 12-16-76. The corner was corrected to a proper position of, on line between N1/4 cor & NW cor. of Sec. 31 and at prorated distance to U.S. (G.L.O.), run-out section, on 7/22/86.



C. Description of monument for corner and accessories established to perpetuate locating the position of the corner:

Drove 3/4" x 48" rerod & set Ced. Post w/LOCATION TAG.

- 13" Maple S84°E 54.7'
- 8" Cedar N36°E 21.2'
- 8" Ash N20°W 12.1'
- ctr. E-W Swp. Road, North, 3't



Signed by Carl F. Roser 04/07/87 Date _____

Surveyor's Michigan License No. 12028