

MICHIGAN
DEPARTMENT OF CONSERVATION
FORESTRY DIVISION

LAND CORNER RECORD

T. 28 N.R. 5 W

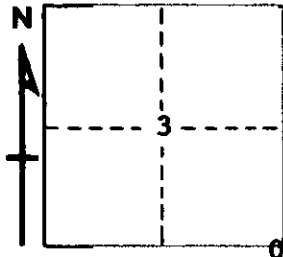
KALKASKA COUNTY

DESCRIPTION OF CORNER SECTION CORNER COMMON TO SECTIONS 2-3-10-11

CORNER MONUMENT SET CONS. DEPT. MON.

DATE MONUMENT PLACED AND WITNESSED AUGUST 1968

WITNESSES TO CORNER.....



CIRCLE CORNER REGISTERED

14" Maple S 10 W 56.5'

17" Maple N 10 W 19.8'

AND

DESCRIPTION IN DETAIL AS TO HOW CORNER WAS LOCATED AND IDENTIFIED OR RESTORED.

THIS CORNER WAS FOUND DURING A RETRACEMENT IN THIS TOWNSHIP. FOUND CAUKINS POST AS ESTABLISHED IN 1919 SURVEY. CONSIDERED THE BEST AVAILABLE EVIDENCE OF PROPER LOCATION FOR CORNER.

SURVEYOR'S SEAL

SIGNED *Kenneth J. DeLong* DATE 9/5/68
REGISTERED LAND SURVEYOR #10068