

MICHIGAN
DEPARTMENT OF CONSERVATION
FORESTRY DIVISION

LAND CORNER RECORD

T. 28 N.R. 5 W

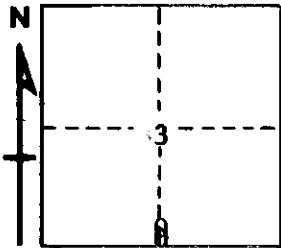
Kalkaska COUNTY

DESCRIPTION OF CORNER 1/4 corner common to Sections 3 - 10

CORNER MONUMENT Set Cons. Dept. Monument

DATE MONUMENT PLACED AND WITNESSED Aug. 1968

WITNESSES TO CORNER.....



CIRCLE CORNER REGISTERED

5" Maple S 75 E 20.7'

3" N. Pine N 25 W 53.3'

AND

DESCRIPTION IN DETAIL AS TO HOW CORNER WAS LOCATED AND IDENTIFIED OR RESTORED.

This corner was found during retracement in this township. Found B. L. Caukins 1919 post at corner. Caukins record claims to have identified U.S.B.T., positively. One of few original corners in this township.

SURVEYOR'S SEAL

SIGNED *Kenneth D. Pettigrew* DATE 9/5/68
REGISTERED LAND SURVEYOR #10068