

STATE OF MICHIGAN
DEPARTMENT
OF
NATURAL RESOURCES

LAND CORNER RECORD

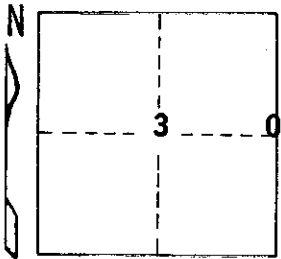
KALKASKA COUNTY
T 28 N R 5 W

DESCRIPTION OF CORNER 1/4 corner common to sections 2 - 3

CORNER MONUMENT Set Dept. Monument

DATE MONUMENT PLACED AND WITNESSED 10-30-69

WITNESSES TO CORNER.....



8" Elm S 33 W 9.0'

8" Elm N 52 W 67.2'

AND

CIRCLE CORNER REGISTERED

DESCRIPTION IN DETAIL AS TO HOW CORNER WAS LOCATED AND IDENTIFIED OR RESTORED.

This corner was found during a retracement in this township. Found B. L. Caukins post, as established in 1919 survey of this township. No U.S. evidence left. Best available evidence of corner.

SURVEYOR'S SEAL

SIGNED *Leanneth Dettling* 10068 DATE 11-4-69
REGISTERED LAND SURVEYOR

DISTRIBUTION: _____

County Courthouse
Area Forester (Regions I & II)
District or Region Surveyor
Forestry Div., Lansing