

SURVEY & REMONUMENTATION

MAR 03 1998

KENT COUNTY REMONUMENTATION

LAND CORNER RECORDATION CERTIFICATE Filing Requirement of Act 74, Mich. P.A. 1970

For corners in

KENT COUNTY

(County)

Located In:

Corner Code #

1. Public Land Survey	T 5N R 9W	C-3	
	T	R	
	T	R	
	T	R	
	T	R	
2. Property Controlling in Section	S	T	R
	S	T	R
3. Miscellaneous Property in Sec.	S	T	R
	S	T	R

REG. OF DEEDS

Lucy St. Paul

97 APR 29 AM 8:17

STATE OF MICHIGAN
COUNTY OF KENT
RECEIVED FOR RECORD

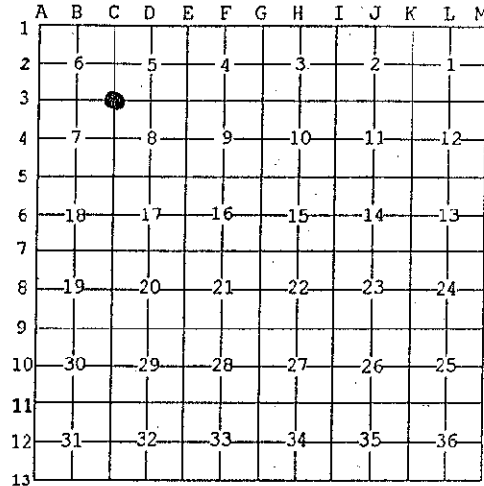
9713

Register of Deeds Stamp & File Number

4. Lot No. _____, Recorded Plat _____
5. Private Claims _____

I, Kirk Breitels, in a field survey on Jan. 17, 1997 do hereby state that under requirements of P.A. 74, Michigan P.A. of 1970, the corner points mentioned in lines 1 and 2 above were in conformance with regulations and rules therefore as required in the current manual of survey instructions of the United States Department of the Interior, Bureau of Land Management or by a decree of a Court of Law and /or that the corner points mentioned in lines 3, 4 and 5 above were in conformance with the rules of the Michigan Board of Land Surveyors or by a Decree of a Court of Law; established, re-established, monumented, recovered, found as expressed below:

NOTE: Not more than 2 corners, all in the same town and range, may be recorded on this certificate.



A. Description of original monument and accessories and/or subsequent restoration:

C-3	1830	GLO	Mullett	Set Post
	1963	Kent Co. Wit.		1/2" Iron
	1974	LCRC #704	Bonnema	"T" Iron
	1976	LCRC #968	Ankrom	"T" Iron
	1981	LCRC #2099	Merdzinski	"T" Iron in Mon. Box
	1982	LCRC #2661	Bonnema	Set Kent County Monument in Mon. Box
	1990	LCRC #5339	Starr	Kent County Monument

The position of this corner was previously approved by the Kent County Remonumentation Peer Group, monumented by Douglas W. Bonnema on 2/19/82 and was recorded per LCRC #2661

B. Description of corner evidence found and/or method applied in restoring or reestablishing corner:

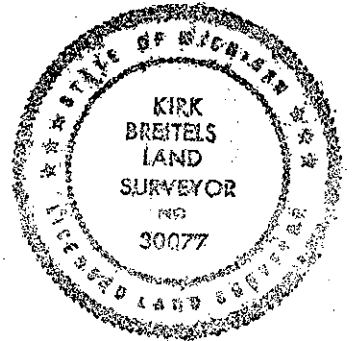
C-3 Found standard Kent Co. Mon. (Harrison) per witnesses from above LCRC as set by Douglas W. Bonnema in place of the "T" Iron over a 3/4" Iron he found inside a Mon. Box. Both Irons check with Kent Co. Wit. and LCRC's #704, #968, #2099.

<u>LCRC #2661</u>	<u>LCRC #5339</u>		
NE cor. school hse.	S30°W 105.23'	Nail & tag in guard post	S69°E 66.07'
Nail & tag 10" Oak	S60°W 123.46'	NE corner school house	S34°W 105.24'
Nail & tag 6" Oak	N45°W 88.66'	Nail & tag 12" Oak	S60°W 123.42'
Nail & tag fc. post	N45°E 50.36'	Nail & tag Tw. 12" Oak	N44°W 88.53'
Nail & tag 10" Poplar	S45°E 107.55'	Nail & tag fence post	N46°E 50.64'

The selected location is accepted by me and is generally accepted by professional surveyors as the best available evidence of the position of the original corner.

C. Description of monument for corner and accessories established to perpetuate locating the position of the corner:

C-3 Standard Kent County Monument in Mon. Box	
NE corner school house	S34°W 105.24'
Nail & KC Remon. tag NW side 14" Oak	S60°W 123.34'
Nail & KC Remon. tag SW side Tw. 12" Oak	N44°W 88.44'
Nail & KC Remon. tag SE side corner fence post	N46°E 50.60'
West edge stop sign post	S20°E 49.11'
On C/L "X" Morse Lake Ave. and 68th St. ±	



Signed by Kirk Breitels
Surveyor's Michigan License No. 30077

Date 3/27/97

P.A. 345 1990 KENT COUNTY
PEER APPROVED 3/27/97
CHAIRMAN Harry Hubers