

MAR 03 1998

SECTION

KENT COUNTY REMONUMENTATION

LAND CORNER RECORDATION CERTIFICATE
Filing Requirement of Act 74, Mich. P.A. 1970

For corners in
KENT COUNTY

(County)

Located In: Corner Code #

- 1. Public Land Survey T 5N R 9W D-5
- T R
- T R
- T R
- 2. Property Controlling S T R
- in Section S T R
- 3. Miscellaneous S T R
- Property in Sec. S T R

STATE OF MICHIGAN
COUNTY OF KENT
RECEIVED FOR RECORD
97 APR 29 AM 8:17
REG. OF DEEDS
Lucy [Signature]

9723

Register of Deeds Stamp & File Number

4. Lot No. _____, Recorded Plat _____
5. Private Claims _____

I, Kirk Breitels, in a field survey on Feb. 27, 1997 do hereby state that under requirements of P.A. 74, Michigan P.A. of 1970, the corner points mentioned in lines 1 and 2 above were in conformance with regulations and rules therefore as required in the current manual of survey instructions of the United States Department of the Interior, Bureau of Land Management or by a decree of a Court of Law and /or that the corner points mentioned in lines 3, 4 and 5 above were in conformance with the rules of the Michigan Board of Land Surveyors or by a Decree of a Court of Law, established, re-established, monumented, recovered, found as expressed below:

NOTE: Not more than 2 corners, all in the same town and range, may be recorded on this certificate.

A	B	C	D	E	F	G	H	I	J	K	L	M
1												
2	6		5		4		3		2		1	
3												
4	7		8		9		10		11		12	
5												
6	18		17		16		15		14		13	
7												
8	19		20		21		22		23		24	
9												
10	30		29		28		27		26		25	
11												
12	31		32		33		34		35		36	
13												

A. Description of original monument and accessories and/or subsequent restoration:

D-5	1830	GLO	Mullett	Set Post
		Kent Co. Wit.		Iron
	1981	LCRC #1811	Bonnema	1" Iron
	1982	LCRC #2857	Jonker	Set Kent County Monument
	1990	LCRC #5351	Starr	Kent County Monument

The position of this corner was previously approved by the Kent County Remonumentation Peer Group, monumented by Robert J. Jonker on 5/14/82 and was recorded per LCRC #2857

B. Description of corner evidence found and/or method applied in restoring or reestablishing corner:

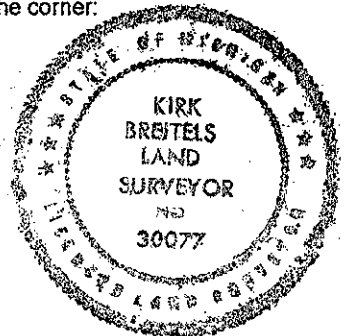
D-5 Found standard Kent Co. Mon. (Harrison) per witnesses from above LCRC as set by Robert J. Jonker in place of the 1" Iron he found. Said Iron checks with Kent Co. Wit. and LCRC #1811.

<u>LCRC #2857</u>		<u>LCRC #5351</u>
Remon. tag 36" Maple N40°W 37.05'		Nail & tag 30" Oak N60°W 77.06'
Remon. tag 26" Maple N70°W 81.18'		Nail & tag 34" Maple N69°W 81.41'
Remon. tag 32" Hickory N85°E 179.70'		Nail & tag 28" Maple N40°W 37.05'
Remon. tag 24" Walnut S75°E 103.13'		Nail & tag 32" Hickory N85°E 179.70'
		Nail & tag 24" Walnut S74°E 103.12'

The selected location is accepted by me and is generally accepted by professional surveyors as the best available evidence of the position of the original corner.

C. Description of monument for corner and accessories established to perpetuate locating the position of the corner:

D-5 Standard Kent County Monument	
Nail & KC Remon. tag NE side 34" Oak	N60°W 76.98'
Nail & KC Remon. tag S. side 34" Maple	N69°W 81.41'
Nail & KC Remon. tag E. side 32" Maple	N40°W 37.09'
Nail & KC Remon. tag S. side 36" Hickory	N85°E 179.55'
Nail & KC Remon. tag N. side 28" Walnut	S74°E 103.12'
On C/L E-W gravel road	



Signed by *Kirk Breitels*
Surveyor's Michigan License No. 30077

Date 3/27/97

P.A. 345 1990 KENT COUNTY

PEER APPROVED 3/27/97
CHAIRMAN *Harry Hubert*