

SURVEY & REMONUMENTATION

MAR 03 1998

KENT COUNTY REMONUMENTATION

SECTION

LAND CORNER RECORDATION CERTIFICATE
Filing Requirement of Act 74, Mich. P.A. 1970

For corners in
KENT COUNTY

Located In:	Corner Code #
(County)	
1. Public Land Survey	T 5N R 9W E-5
	T R
	T R
	T R
	T R
2. Property Controlling in Section	S T R
	S T R
3. Miscellaneous Property in Sec.	S T R
	S T R

STATE OF MICHIGAN
COUNTY OF KENT
RECEIVED FOR RECORD
97 APR 29 AM 8:18
REG. OF DEEDS
Lucy St. Paul

9732

Register of Deeds Stamp & File Number

4. Lot No. _____, Recorded Plat _____
5. Private Claims _____

	A	B	C	D	E	F	G	H	I	J	K	L	M
1													
2	6		5		4		3		2		1		
3													
4	7		8		9		10		11		12		
5													
6	18		17		16		15		14		13		
7													
8	19		20		21		22		23		24		
9													
10	30		29		28		27		26		25		
11													
12	31		32		33		34		35		36		
13													

I, Kirk Breitels, in a field survey on Jan. 24, 1997 do hereby state that under requirements of P.A. 74, Michigan P.A. of 1970, the corner points mentioned in lines 1 and 2 above were in conformance with regulations and rules therefore as required in the current manual of survey instructions of the United States Department of the Interior, Bureau of Land Management or by a decree of a Court of Law and/or that the corner points mentioned in lines 3, 4 and 5 above were in conformance with the rules of the Michigan Board of Land Surveyors or by a Decree of a Court of Law; established, re-established, monumented, recovered, found as expressed below:

NOTE: Not more than 2 corners, all in the same town and range, may be recorded on this certificate.

A. Description of original monument and accessories and/or subsequent restoration:

E-5	1830	GLO	Mullett	Set Post
		Kent Co. Wit.		1" Iron
	1975	LCRC #1006	Nederveld	3/4" Round Iron
		Exxel Records		3/4" Iron
	1982	LCRC #2663	Bonnema	Set Kent County Monument
	1990	LCRC #5359	Starr	Kent County Monument

The position of this corner was previously approved by the Kent County Remonumentation Peer Group, monumented by Douglas W. Bonnema on 2/19/82 and was recorded per LCRC #2663

B. Description of corner evidence found and/or method applied in restoring or reestablishing corner:
E-5 Found standard Kent Co. Mon. (Harrison) per witnesses from above LCRC as set by Douglas W. Bonnema in place of the 3/4" Iron he found. Said Iron checks with Exxel Records and LCRC #1006. Kent Co. Wit. all gone.

LCRC #2663	LCRC #5359
Nail & tag 24" Hickory S80°W 137.53'	Nail & tag P. Pole S89°E 110.86'
Nail & tag 10" Hickory N80°W 146.40'	Nail & tag P. Pole S31°E 196.84'
Nail & tag 12" Cherry S10°W 196.82'	Nail & tag 12" Cherry S12°W 196.85'
Nail & tag P. Pole N90°E 110.72'	Nail & tag 22" Hickory S80°W 137.48'
Nail & tag P. Pole S45°E 196.77'	Nail & tag 12" Elm N23°W 96.25'

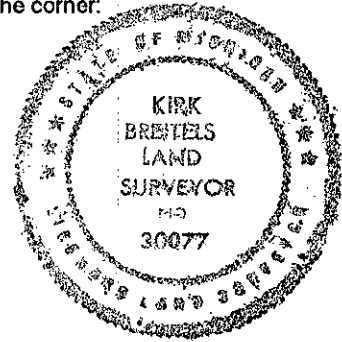
The selected location is accepted by me and is generally accepted by professional surveyors as the best available evidence of the position of the original corner.

C. Description of monument for corner and accessories established to perpetuate locating the position of the corner:

E-5 Standard Kent County Monument (Meas. by EDM)

Nail & KC Remon. tag S. side Power Pole	S89°E	110.70'
Nail & KC Remon. tag SW side Power Pole	S31°E	196.72'
Nail & KC Remon. tag E. side 15" Cherry	S12°W	196.76'
Nail & KC Remon. tag N. side 26" Hickory	S80°W	137.42'
Nail & KC Remon. tag E. side 10" Cherry	N30°W	86.00'

Corner is 1'± West of C/L North-South bit. road
Corner is 9'± North of C/L grav. road West



Signed by *Kirk Breitels*
Surveyor's Michigan License No. 30077

Date 3/27/97

P.A. 345 1990 KENT COUNTY
PEER APPROVED 3/27/97
CHAIRMAN *Harry Hubert*