

SURVEY & REMONUMENTATION

MAR 03 1998

KENT COUNTY REMONUMENTATION

LAND CORNER RECORDATION CERTIFICATE
Filing Requirement of Act 74, Mich. P.A. 1970

SECTION

For corners in
KENT COUNTY

(County)

Located In:	Corner Code #
T 5N R 9W	F-5
T R	
T R	
T R	
S T R	
S T R	
S T R	
S T R	

1. Public Land Survey

2. Property Controlling in Section

3. Miscellaneous

Property in Sec.

4. Lot No. _____, Recorded Plat _____

5. Private Claims _____

I, Kirk Breitels, in a field survey on Jan. 17, 1997 do hereby state that under requirements of P.A. 74, Michigan P.A. of 1970, the corner points mentioned in lines 1 and 2 above were in conformance with regulations and rules therefore as required in the current manual of survey instructions of the United States Department of the Interior, Bureau of Land Management or by a decree of a Court of Law and/or that the corner points mentioned in lines 3, 4 and 5 above were in conformance with the rules of the Michigan Board of Land Surveyors or by a Decree of a Court of Law, established, re-established, monumented, recovered, found as expressed below:

NOTE: Not more than 2 corners, all in the same town and range, may be recorded on this certificate.

STATE OF MICHIGAN
COUNTY OF KENT
RECEIVED FOR RECORD

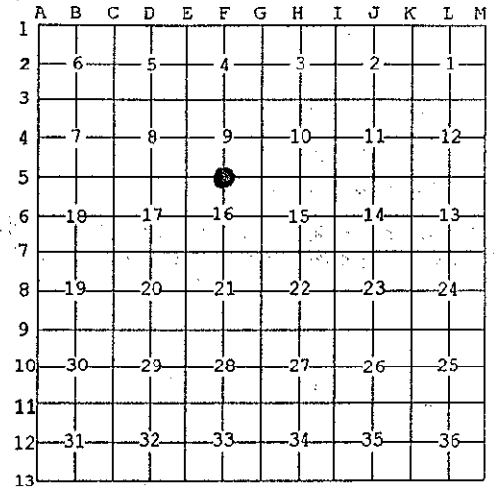
97 APR 29 AM 8:18

REG. OF DEEDS

Lucy Bond

9738

Register of Deeds Stamp & File Number



A. Description of original monument and accessories and/or subsequent restoration:

F-5	1830	GLO	Mullett	Set Post
	1975	LCRC #1006	Nederveld	Set 1" Pipe
	1981	LCRC #2234	Jonker	Set Kent County Monument
	1990	LCRC #5368	Starr	Kent County Monument

The position of this corner was previously approved by the Kent County Remonumentation Peer Group, monumented by Robert J. Jonker on 11/6/81 and was recorded per LCRC #2234

B. Description of corner evidence found and/or method applied in restoring or reestablishing corner:

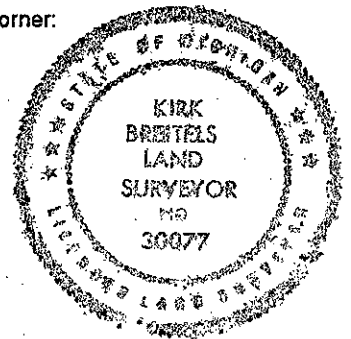
F-5 Found standard Kent Co. Mon. (Harrison) per witnesses from above LCRC as set by Robert J. Jonker in place of the 1" Pipe he found. Said 1" Pipe checks with LCRC #1006. LCRC #2234

LCRC #2234		LCRC #5368	
Remon. tag 9" Cherry	N10°W 12.61'	Nail & tag 8" Willow	N70°W 28.50'
Remon. tag cor. fc. post	S10°E 4.00'	Nail & tag 10" Cherry	N09°W 12.62'
Remon. tag 36" Oak	S75°E 134.65'	Nail & tag cor. fc. post	S12°E 3.89'
Remon. tag 6" Willow	N78°W 27.33'	Nail & tag 36" Oak	S74°E 134.66'

The selected location is accepted by me and is generally accepted by professional surveyors as the best available evidence of the position of the original corner.

C. Description of monument for corner and accessories established to perpetuate locating the position of the corner:

F-5 Standard Kent County Monument	
Nail & KC Remon. tag S. side 14" Willow	N70°W 28.55'
Nail & KC Remon. tag E. side 12" Cherry	N09°W 12.62'
Nail & KC Remon. tag E. side corner fence post	S12°E 3.89'
Nail & KC Remon. tag S. side 40" Oak	S74°E 134.66'
Corner falls in 15' wide E-W ditch	
Fence line to North is 1' East	
Fence line to West is 4' South	



Signed by *Kirk Breitels*
Surveyor's Michigan License No. 30077

Date 3/27/97

P.A. 345 1990 KENT COUNTY

PEER APPROVED 3/27/97
CHAIRMAN *Harry Hubert*