

**SURVEY & REMONUMENTATION**

MAR 03 1998

KENT COUNTY REMONUMENTATION

**SECTION LAND CORNER RECORDATION CERTIFICATE**  
Filing Requirement of Act 74, Mich. P.A. 1970

For corners in  
KENT COUNTY  
(County)

Located In:	Corner Code #
T 5N R 9W	G-5
T R	
T R	
T R	
S T R	
S T R	
S T R	
S T R	

- 1. Public Land Survey
- 2. Property Controlling in Section
- 3. Miscellaneous Property in Sec.

STATE OF MICHIGAN  
COUNTY OF KENT  
RECEIVED FOR RECORD

97 JUN -3 AM 8:12

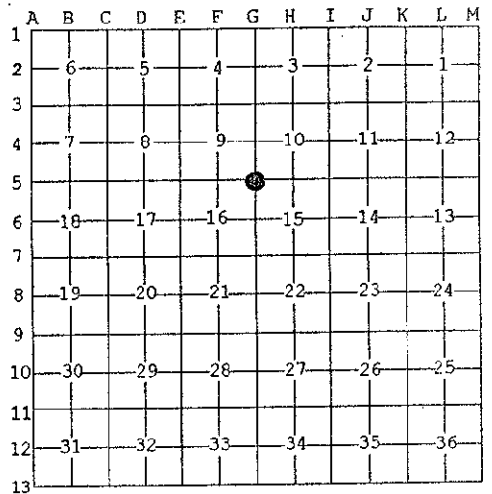
REG. OF DEEDS

10012

Register of Deeds Stamp & File Number

4. Lot No. \_\_\_\_\_, Recorded Plat \_\_\_\_\_  
5. Private Claims \_\_\_\_\_

I, Kirk Breitels, in a field survey on Apr. 15, 1997, do hereby state that under requirements of P.A. 74, Michigan P.A. of 1970, the corner points mentioned in lines 1 and 2 above were in conformance with regulations and rules therefore as required in the current manual of survey instructions of the United States Department of the Interior, Bureau of Land Management or by a decree of a Court of Law and /or that the corner points mentioned in lines 3, 4 and 5 above were in conformance with the rules of the Michigan Board of Land Surveyors or by a Decree of a Court of Law; established, re-established, monumented, recovered, found as expressed below:



NOTE: Not more than 2 corners, all in the same town and range, may be recorded on this certificate.

A. Description of original monument and accessories and/or subsequent restoration:

Year	LCRC #	Witness	Monument
G-5	1830	GLO	Mullett Set Post
		Kent Co. Wit.	3/4" Pipe
	1975	LCRC #1006	Nederveld 1" Rod in Mon. Box
	1981	LCRC #2240	Jonker Set Kent County Monument in Mon. Box
	1990	LCRC #5376	Starr Kent County Monument

The position of this corner was previously approved by the Kent County Remonumentation Peer Group, monumented by Robert J. Jonker on 11/6/81 and was recorded per LCRC #2240

B. Description of corner evidence found and/or method applied in restoring or reestablishing corner:

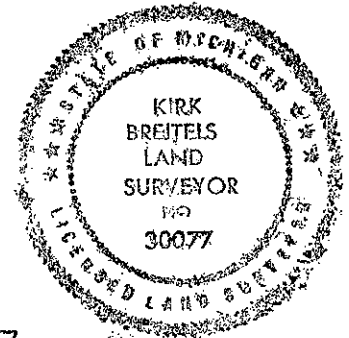
G-5 Found standard Kent Co. Mon. (Harrison) per witnesses from above LCRC as set by Robert J. Jonker in place of the 1" Solid Iron he found inside a Mon. Box. Said Iron checks with LCRC #1006.

LCRC #2240	LCRC #5376
Remon. tag P. Pole N15°E 229.40'	same witnesses as LCRC #2240
Remon. tag P. Pole S21°E 129.05'	
C/L top steel fc. post N76°E 52.62'	
C/L top steel fc. post S78°W 51.93'	

The selected location is accepted by me and is generally accepted by professional surveyors as the best available evidence of the position of the original corner.

C. Description of monument for corner and accessories established to perpetuate locating the position of the corner:

G-5 Standard Kent County Monument	
Nail & KC Remon. tag W. side P. Pole	N15°E 229.60'
Nail & KC Remon. tag E. side new P. Pole	S20°E 126.70'
Nail & KC Remon. tag SW side 12" Maple	N35°W 118.04'
C/L top steel fence post	N76°E 52.62'
C/L top leaning steel fence post	S78°W 51.3'
Capped Rerod (Exxel)	East 49.96'
C/L N-S asphalt road is 0.5'± West	
On C/L ditch West ±	



Signed by Kirk Breitels  
Surveyor's Michigan License No. 30077

Date 5/22/97

P.A. 345 1990 KENT COUNTY  
PEER APPROVED 5/22/97  
CHAIRMAN Harry Huber