

SURVEY & REMONUMENTATION

MAR 03 1998

KENT COUNTY REMONUMENTATION

SECTION

LAND CORNER RECORDATION CERTIFICATE
Filing Requirement of Act 74, Mich. P.A. 1970

For corners in
KENT COUNTY
(County)

Located In:	Corner Code #
T <u>5N</u> R <u>9W</u>	<u>G-7</u>
T ___ R ___	_____
T ___ R ___	_____
T ___ R ___	_____
S ___ T ___ R ___	_____
S ___ T ___ R ___	_____
S ___ T ___ R ___	_____
S ___ T ___ R ___	_____

- 1. Public Land Survey
- 2. Property Controlling in Section
- 3. Miscellaneous Property in Sec.

STATE OF MICHIGAN
COUNTY OF KENT
RECEIVED FOR RECORD

97 JUN -3 AM 8:12

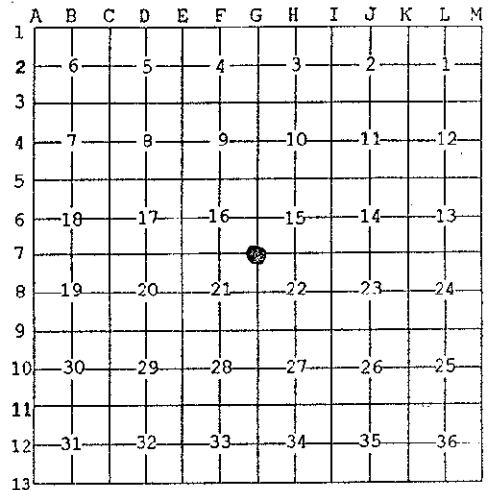
REG. OF DEEDS

10013

Register of Deeds Stamp & File Number

- 4. Lot No. _____, Recorded Plat _____
- 5. Private Claims _____

I, Kirk Breitels, in a field survey on Apr. 15, 1997 do hereby state that under requirements of P.A. 74, Michigan P.A. of 1970, the corner points mentioned in lines 1 and 2 above were in conformance with regulations and rules therefore as required in the current manual of survey instructions of the United States Department of the Interior, Bureau of Land Management or by a decree of a Court of Law and /or that the corner points mentioned in lines 3, 4 and 5 above were in conformance with the rules of the Michigan Board of Land Surveyors or by a Decree of a Court of Law; established, re-established, monumented, recovered, found as expressed below:



NOTE: Not more than 2 corners, all in the same town and range, may be recorded on this certificate.

A. Description of original monument and accessories and/or subsequent restoration:

Corner Code	Year	Witness	Monument
G-7	1830	GLO	Mullett Set Post
	1960	Kent Co. Wit.	1" Iron Pipe in Mon. Box
	1983	LCRC #3442	Rerod & Cap #8618 in Mon. Box
	1983	LCRC #3553	1/2" Rod in Mon. Box
	1983	LCRC #3603	Set Kent County Monument in Mon. Box
	1990	LCRC #5377	Kent County Monument

The position of this corner was previously approved by the Kent County Remonumentation Peer Group, monumented by Randy J. Kolehouse on 11/8/83 and was recorded per LCRC #3603

B. Description of corner evidence found and/or method applied in restoring or reestablishing corner:

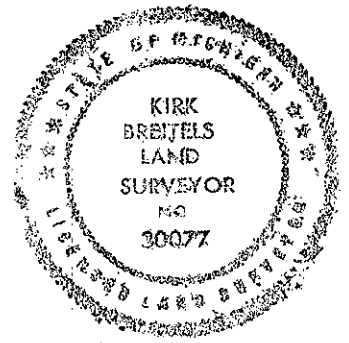
G-7 Found standard Kent Co. Mon. (Harrison) per witnesses from above LCRC as set by Randy J. Kolehouse in place of the 1/2" Capped Rerod inside a 1" Iron he found inside a Mon. Box. Both Irons check with Kent Co. Wit. and LCRC's #3442 & #3553.

LCRC #3603	LCRC #5377
Nail & tag 30" Maple	N65°W 79.15'
SW cor. church fdn.	N45°E 112.0'
NW cor. conc. hdwl.	S25°W 57.00'
NE cor. conc. hdwl.	S25°E 57.35'
SW cor. church ind. (entry)	N65°E 109.58'
Nail & tag Tw. 12" Maple	S25°W 81.30'

The selected location is accepted by me and is generally accepted by professional surveyors as the best available evidence of the position of the original corner.

C. Description of monument for corner and accessories established to perpetuate locating the position of the corner:

Corner Code	Monument Description	Bearing	Distance
G-7	Standard Kent County Monument		
	Nail & KC Remon. tag SW side 36" Maple	N65°W	79.15'
	NW corner concrete headwall (SW cor. bevel)	S25°W	57.00'
	NE corner concrete headwall (SE cor. bevel)	S25°E	57.35'
	SW corner church (entry) foundation	N65°E	109.58'
	Nail & KC Remon. tag E. side Twin 16" Maple	S25°W	81.24'
	C/L N-S Bit. road is 0.5'± West		
	C/L bit. road East is 6'± North		
	On C/L bit. road West		



Signed by [Signature]
Surveyor's Michigan License No. 30077

Date 5/22/97

P.A. 345 1990 KENT COUNTY
PEER APPROVED 5/22/97
CHAIRMAN [Signature]