

SURVEY & REMONUMENTATION

MAR 03 1998

KENT COUNTY REMONUMENTATION

LAND CORNER RECORDATION CERTIFICATE
Filing Requirement of Act 74, Mich. P.A. 1970

SECTION

For corners in
KENT COUNTY
(County)

Located In:	Corner Code #
T <u>5N</u> R <u>9W</u>	<u>K-3</u>
T <u> </u> R <u> </u>	<u> </u>
T <u> </u> R <u> </u>	<u> </u>
T <u> </u> R <u> </u>	<u> </u>
S <u> </u> T <u> </u> R <u> </u>	<u> </u>
S <u> </u> T <u> </u> R <u> </u>	<u> </u>
S <u> </u> T <u> </u> R <u> </u>	<u> </u>
S <u> </u> T <u> </u> R <u> </u>	<u> </u>

1. Public Land Survey

2. Property Controlling in Section

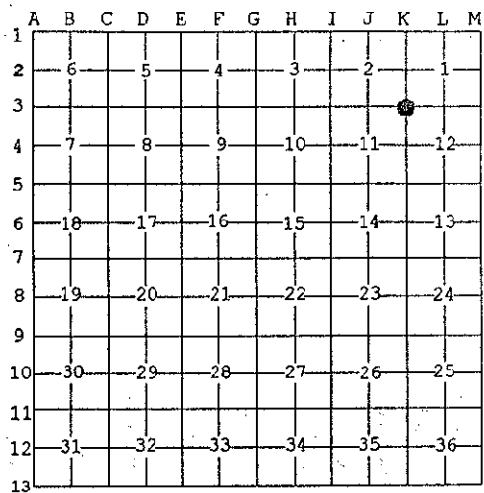
3. Miscellaneous Property in Sec.

4. Lot No. _____, Recorded Plat _____
5. Private Claims _____

STATE OF MICHIGAN
COUNTY OF KENT
RECEIVED FOR RECORD
97 APR 29 AM 8:20
REG. OF DEEDS

9772

Register of Deeds Stamp & File Number



I, Kirk Breitels, in a field survey on Jan. 29, 1997 do hereby state that under requirements of P.A. 74, Michigan P.A. of 1970, the corner points mentioned in lines 1 and 2 above were in conformance with regulations and rules therefore as required in the current manual of survey instructions of the United States Department of the Interior, Bureau of Land Management or by a decree of a Court of Law and/or that the corner points mentioned in lines 3, 4 and 5 above were in conformance with the rules of the Michigan Board of Land Surveyors or by a Decree of a Court of Law; established, re-established, monumented, recovered, found as expressed below:

NOTE: Not more than 2 corners, all in the same town and range, may be recorded on this certificate.

A. Description of original monument and accessories and/or subsequent restoration:

K-3	1830	GLO	Mullett	Set Post
	1941	Kent Co. Wit.		Mon. Box
	1981	LCRC #1629	Byl	3/4" Iron in Mon. Box
	1982	LCRC #2848	Jonker	Set Kent County Monument in Mon. Box
	1994	LCRC #6986	Byl	Kent County Monument in Mon. Box

The position of this corner was previously approved by the Kent County Remonumentation Peer Group, monumented by Robert J. Jonker on 5/13/82 and was recorded per LCRC #2848

B. Description of corner evidence found and/or method applied in restoring or reestablishing corner:

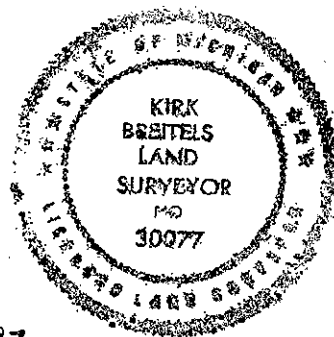
K-3 Found standard Kent Co. Mon. (Harrison) per witnesses from above LCRC as set by Robert J. Jonker in place of the 3/4" Iron over a 1 1/2" Iron he found inside a Mon. Box. Both Irons check with Kent Co. Wit. and LCRC #1629.

LCRC #2848		LCRC #6986	
Cor. steel fc. post	N45°E 49.27'	Cor. steel fc. post	N45°E 49.27'
Remon. tag P. Pole	S55°E 55.78'	Nail & tag P. Pole	S55°E 55.78'
Boat spike in P. Pole	S70°W 62.34'	Cut mark on culv.	N45°W 24.76'
Cut mark on culv.	N45°W 24.76'	Nail & tag P. Pole	S70°W 62.66'
		Nail & tag 24" Maple	S70°E 113.38'

The selected location is accepted by me and is generally accepted by professional surveyors as the best available evidence of the position of the original corner.

C. Description of monument for corner and accessories established to perpetuate locating the position of the corner:

K-3	Standard Kent County Monument in Mon. Box
Corner of steel fence post	N45°E 49.27'
Nail & KC Remon. tag SW side P. Pole	S55°E 55.78'
Vertical cut on N. end culvert	N45°W 24.76'
Nail & KC Remon. tag N. side P. Pole	S70°W 62.68'
Nail & KC Remon. tag N. side 24" Maple	S70°E 113.38'
C/L "X" intersection is 0.5' E.	



Signed by Kirk Breitels
Surveyor's Michigan License No. 30077

Date 3/27/97

P.A. 345 1990 KENT COUNTY
PEER APPROVED 3/27/97
CHAIRMAN Harry Hubert