

SURVEY & REMONUMENTATION

MAR 03 1998

KENT COUNTY REMONUMENTATION

LAND CORNER RECORDATION CERTIFICATE
Filing Requirement of Act 74, Mich. P.A. 1970

STATE OF MICHIGAN
 COUNTY OF KENT
 RECEIVED FOR RECORD
 97 APR 29 AM 0:20
 REG. OF DEEDS
Lucy Bond

SECTION

For corners in
KENT COUNTY
(County)

Located In:	Corner Code #
T <u>5N</u> R <u>9W</u>	<u>K-9</u>
T ___ R ___	_____
T ___ R ___	_____
T ___ R ___	_____
T ___ R ___	_____
S ___ T ___ R ___	_____
S ___ T ___ R ___	_____
S ___ T ___ R ___	_____
S ___ T ___ R ___	_____

1. Public Land Survey
2. Property Controlling in Section
3. Miscellaneous Property in Sec.

9777

Register of Deeds Stamp & File Number

4. Lot No. _____, Recorded Plat _____
5. Private Claims _____

I, Kirk Breitels, in a field survey on Feb. 5, 1997 do hereby state that under requirements of P.A. 74, Michigan P.A. of 1970, the corner points mentioned in lines 1 and 2 above were in conformance with regulations and rules therefore as required in the current manual of survey instructions of the United States Department of the Interior, Bureau of Land Management or by a decree of a Court of Law and/or that the corner points mentioned in lines 3, 4 and 5 above were in conformance with the rules of the Michigan Board of Land Surveyors or by a Decree of a Court of Law; established, re-established, monumented, recovered, found as expressed below:

NOTE: Not more than 2 corners, all in the same town and range, may be recorded on this certificate.

A	B	C	D	E	F	G	H	I	J	K	L	M
1												
2	6	5	4	3	2	1						
3												
4	7	8	9	10	11	12						
5												
6	18	17	16	15	14	13						
7												
8	19	20	21	22	23	24						
9												
10	30	29	28	27	26	25						
11												
12	31	32	33	34	35	36						
13												

A. Description of original monument and accessories and/or subsequent restoration:

K-9	1830	GLO	Mullett	Set Post
		Kent Co. Wit.		Boat Spike in Lead Pipe
	1974	LCRC #636	Bonnema	Boat Spike
	1981	LCRC #2575	Bueche	Set Kent County Monument in Mon. Box
	1994	LCRC #6991	Byl	Kent County Monument in Mon. Box

The position of this corner was previously approved by the Kent County Remonumentation Peer Group, monumented by John C. Bueche on 12/13/81 and was recorded per LCRC #2575

B. Description of corner evidence found and/or method applied in restoring or reestablishing corner:

K-9 Found standard Kent Co. Mon. (Harrison) per witnesses from above LCRC as set by John C. Bueche in place of the Boat Spike he found over a Conc. Mon. inside a Mon. Box. Said Boat Spike over Conc. Mon. checks with Kent Co. Wit. and LCRC #636.

LCRC #2575

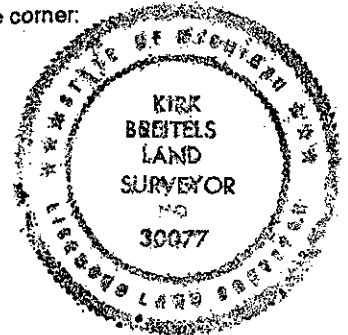
Nail & tag 14" Cherry	N00°W	103.21'	Nail & tag 48" Maple	N70°W	80.14'
Nail & tag 44" Maple	N70°W	81.71'	Nail & tag 30" Maple	S00°E	30.50'
Nail & tag 26" Maple	S00°E	30.20'	Nail & tag P. Pole	S55°E	97.68'
Nail & tag 12" Elm	S55°E	62.60'	SE cor. RR rail post	N00°E	28.40'

LCRC #6991

The selected location is accepted by me and is generally accepted by professional surveyors as the best available evidence of the position of the original corner.

C. Description of monument for corner and accessories established to perpetuate locating the position of the corner:

K-9	Standard Kent County Monument in Mon. Box		
	Nail & KC Remon. tag S. side 48" Maple	N70°W	80.14'
	Nail & KC Remon. tag E. side 30" Maple	S00°E	30.50'
	Nail & KC Remon. tag S. side P. Pole	S65°E	97.68'
	SE corner RR rail post	N00°E	28.40'
	C/L E-W asph. rd. is North 1'±		



Signed by *Kirk Breitels*

Date 3/27/97

Surveyor's Michigan License No. 30077
P.A. 345 1990 KENT COUNTY

PEER APPROVED 3/27/97
CHAIRMAN *Harry Hubers*