

SURVEY & REMONUMENTATION

MAR 03 1998

KENT COUNTY REMONUMENTATION

LAND CORNER RECORDATION CERTIFICATE
Filing Requirement of Act 74, Mich. P.A. 1970

For corners in **SECTION**
KENT COUNTY

	Located In:	Corner Code #
1. Public Land Survey	T 5N R 9W	K-13
	T _____ R _____	_____
	T _____ R _____	_____
	T _____ R _____	_____
2. Property Controlling in Section	S _____ T _____ R _____	_____
	S _____ T _____ R _____	_____
3. Miscellaneous Property in Sec.	S _____ T _____ R _____	_____
	S _____ T _____ R _____	_____

REG. OF DEEDS

Luigi Spand

97 JUL 11 PM 12:50

STATE OF MICHIGAN
COUNTY OF KENT
RECEIVED FOR RECORD

10014

Register of Deeds Stamp & File Number

4. Lot No. _____, Recorded Plat _____
5. Private Claims _____

I, Kirk Breitels, in a field survey on May 22, 1997 do hereby state that under requirements of P.A. 74, Michigan P.A. of 1970, the corner points mentioned in lines 1 and 2 above were in conformance with regulations and rules therefore as required in the current manual of survey instructions of the United States Department of the Interior, Bureau of Land Management or by a decree of a Court of Law and /or that the corner points mentioned in lines 3, 4 and 5 above were in conformance with the rules of the Michigan Board of Land Surveyors or by a Decree of a Court of Law; established, re-established, monumented, recovered, found as expressed below:

NOTE: Not more than 2 corners, all in the same town and range, may be recorded on this certificate.

	A	B	C	D	E	F	G	H	I	J	K	L	M
1													
2	6	5	4	3	2	1							
3													
4	7	8	9	10	11	12							
5													
6	18	17	16	15	14	13							
7													
8	19	20	21	22	23	24							
9													
10	30	29	28	27	26	25							
11													
12	31	32	33	34	35	36							
13													

A. Description of original monument and accessories and/or subsequent restoration:

K-13	1830	GLO	Mullett	Set Post
	1944	Kent Co. Wit.		1" Iron
	1980	LCRC #1391	Herrema	1" Iron in Mon. Box
	1986	LCRC #4418	Jonker	Set Kent County Monument in Mon. Box
	1994	LCRC #6993	Byl	Kent County Monument in Mon. Box

The position of this corner was previously approved by the Kent County Remonumentation Peer Group, monumented by Robert J. Jonker on 4/8/86 and was recorded per LCRC #4418.

B. Description of corner evidence found and/or method applied in restoring or reestablishing corner:

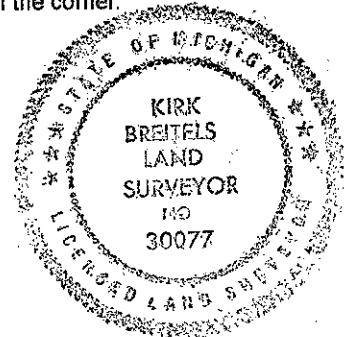
K-13 Found standard Kent Co. Mon. (Harrison) per witnesses from above LCRC as set by Robert J. Jonker in place of the Iron he found inside a Mon. Box. Said Iron checks with Kent Co. Wit. and LCRC #1391.

LCRC #4418				LCRC #6993			
Face of steel post	South	32.7'		Face of steel post	South	32.67'	
Spike in 28" Maple	S55°W	46.57'		Spike in 28" Maple	S55°W	46.57'	
Spike in Tri. 12" Maple	N20°E	39.06'		Spike in Tri. 12" Maple	N20°E	39.06'	
Nail top end guard post	N75°E	56.85'		PK Nail top guard post	N75°E	56.85'	
				Capped Rerod	North	33.02'	

The selected location is accepted by me and is generally accepted by professional surveyors as the best available evidence of the position of the original corner.

C. Description of monument for corner and accessories established to perpetuate locating the position of the corner:

K-13 Standard Kent County Monument in Mon. Box				
Face of steel anchor post to fence	South	32.67'		
Large Spike on NW side 28" Maple	S55°W	46.57'		
Large Spike on W. side Tri. 12" Maple	N20°E	39.06'		
PK Nail on top of end guard post	N75°E	56.85'		
Capped Rerod	North	33.02'		
On fence line to South				
Old fence to North is East 9'±				



Signed by *Kirk Breitels*
Surveyor's Michigan License No. 30077

Date 6/6/97

P.A. 345 1990 KENT COUNTY
PEER APPROVED 5/22/97
CHAIRMAN *Henry Hubert*