

\$7.00
\$2.00

SURVEY & REMONUMENTATION

FEB 14 1997

LAND CORNER RECORDATION CERTIFICATE Filing Requirement of Act 74, Mich. P.A. 1970

For corners in

COMMISSION

KENT COUNTY REMONUMENTATION

Kent (County)	Located in: Caledonia Township	Corner Code #
1. Public Land Survey	T <u>5N</u> R <u>10W</u>	<u>A-6</u>
	T _____ R _____	_____
	T _____ R _____	_____
	T _____ R _____	_____
2. Property Controlling in Section	S _____ T _____ R _____	_____
	S _____ T _____ R _____	_____
3. Miscellaneous Property in Sec.	S _____ T _____ R _____	_____
	S _____ T _____ R _____	_____

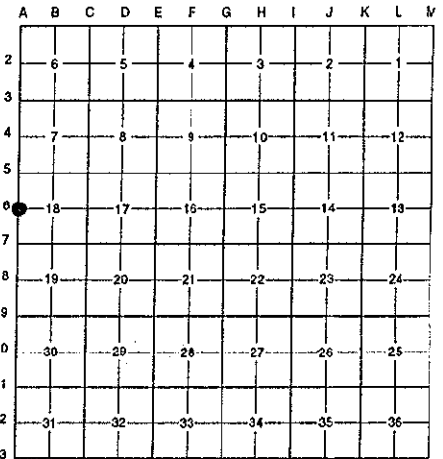
STATE OF MICHIGAN
COUNTY OF KENT
RECEIVED FOR RECORD

96 NOV -8 AM 9:15

REG. OF DEEDS
Lucy Standish
9435

Register of Deeds Stamp & File Number

4. Lot No. _____, Recorded Plat _____
5. Private Claims _____



I, Randy Kolehouse, in a field survey on January 24 19 96, do hereby certify that under requirements of P.A. 74 Michigan P.A. of 1970, the corner points mentioned in lines 1 and 2 above were in conformance with regulations and rules therefore as required in the current manual of survey instructions of the United States Department of the interior, Bureau of Land Management or by a decree of a Court of Law and/or that the corner points mentioned in lines 3, 4 and 5 above were in conformance with the rules of the Michigan Board of Land Surveyors or by a Decree of a Court of Law; established, re-established, monumented, re-monumented, recovered, found as expressed below:

NOTE: Not more than 4 corners, all in the same town and range, may be recorded on this certificate.

A. Description of original monument and accessories and/or subsequent restoration:

A-6 This corner was not originally set by the G.L.O.

Year	Notes	Surveyor	Monument
1957-63	Notes	Williams & Works	"T" Iron over Stone
1964	Witness Map	K.C. Surveyor	"T" Iron
1976	L.C.R.C. #3374	D. Ankrom	"T" Iron
1983	L.C.R.C. #3522	William Byl	Fnd. Boat Spike / Set K.C. Monument
1991	L.C.R.C. #5925	William Byl	K.C. Monument

Note: This corner is not common with M-6, T5N, R11W.

This corner was originally approved by the Kent County Remonumentation Peer Group and monumented by William Byl on 7/29/83 and was recorded per L.C.R.C. #3522.

B. Description of corner evidence found and/or method applied in restoring or reestablishing corner:

A-6 Found a Standard Kent County Monument in the C/L of Patterson Avenue (bit.) running North and South on line of a tree row running East per L.C.R.C.'s #3522 and #5925 as set by William Byl in place of a boat spike he found 0.31' East of the Township line which checked L.C.R.C. #3374, the 1957-63 Williams & Works' notes and the K.C. Surveyor's records.

L.C.R.C. #3522

L.C.R.C. #5925

Nail & tag, N sd. 16" Hickory N 70 W 38.39'
Nail & tag, N sd. 10" Spruce S 75 W 41.92'
Nail & tag, N sd. 12" twin Oak S 45 E 50.62'
C/L USGS monument (Azimuth mark) N 65 E 31.53'
E 1/4 cor. Sec. 13, 5-11, (Kent County Mon.) N 00° E 27.82'

Nail & KC Remon. tag N. side 18" Hickory (Maple) N 70° W 38.37' (m. 38.26')
Nail & KC Remon. tag N. side 12" Spruce S 75° W 41.96' (m. 41.91')
Nail & KC Remon. tag N. side 12" Twin Oak S 45° E 50.62' (m. 50.59')
C/L USGS monument (Azimuth mark) N 65° E 31.53' (m. 31.44')
E 1/4 cor. Sec. 13, 5-11 (Kent County Mon.) N 00° E 27.82'

The selected location is accepted by me and is generally accepted by professional surveyors as the best available evidence of the position of the original corner.

C. Description of monument for corner and accessories established to perpetuate locating the position of the corner:

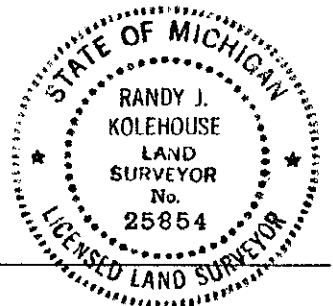
A-6 Standard Kent County Monument

Nail & K.C. remon. tag on N side 18" Maple N 70° W 38.26'
Nail & K.C. remon. tag on N side 12" Spruce S 75° W 41.91'
Nail & K.C. remon. tag on N side 12" Twin Oak S 45° E 50.59'
C/L UsGS Mon. (Az. mark) N 65° E 31.44'
K.C. Mon. E 1/4 Sec. 13, T5N, R11W, N 00° E 27.82'

Signed by Randy J. Kolehouse Date 10/8/96

EARTH TECH

Surveyor's Michigan License No. 25854



P.A. 345 1990 KENT COUNTY

PEER APPROVED 7/26/96

CHAIRMAN Harold W. ...