

\$7.00
\$2.00

FEB 14 1997

COMMISSION

LAND CORNER RECORDATION CERTIFICATE

Filing Requirement of Act 74, Mich. P.A. 1970

KENT COUNTY REMONUMENTATION

For corners in

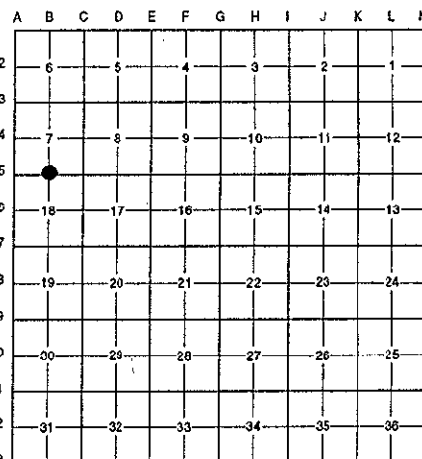
Kent (County)	Located in: Caledonia Township	Corner Code #
1. Public Land Survey	T <u>5N</u> R <u>10W</u>	<u>B-5</u>
	T _____ R _____	_____
	T _____ R _____	_____
	T _____ R _____	_____
2. Property Controlling in Section	S _____ T _____ R _____	_____
	S _____ T _____ R _____	_____
3. Miscellaneous Property in Sec.	S _____ T _____ R _____	_____
	S _____ T _____ R _____	_____

4. Lot No. _____, Recorded Plat _____
5. Private Claims _____

STATE OF MICHIGAN
COUNTY OF KENT
RECEIVED FOR RECORD
95 NOV -8 AM 9:16
REG. OF DEEDS
Lucy Bond
9446
Register of Deeds Stamp & File Number

I, Randy Kolehouse, in a field survey on April 9 19 96, do hereby certify that under requirements of P.A. 74 Michigan P.A. of 1970, the corner points mentioned in lines 1 and 2 above were in conformance with regulations and rules therefore as required in the current manual of survey instructions of the United States Department of the Interior, Bureau of Land Management or by a decree of a Court of Law and/or that the corner points mentioned in lines 3, 4 and 5 above were in conformance with the rules of the Michigan Board of Land Surveyors or by a Decree of a Court of Law; established, re-established, monumented, re-monumented, recovered, found as expressed below:

NOTE: Not more than 4 corners, all in the same town and range, may be recorded on this certificate.



A. Description of original monument and accessories and/or subsequent restoration:

B-5	1831	G.L.O. Notes	Mullett	Set Post
	1945	Witness Map	K.C. Surveyor	Face of Steel
	1973	L.C.R.C. #512	Exxel Engineering	Fnd. Bt. Spike / Replaced with 3/4" Iron
	1976	L.C.R.C. #957	McPherson	1/2" Pipe
	1981	L.C.R.C. #2526	J. Bueche	Fnd. 3/4" x 18" Iron / Set K.C. Monument
	1991	L.C.R.C. #5934	William Byl	K.C. Monument

This corner was originally approved by the Kent County Remonumentation Peer Group and monumented by J. Bueche on 12/16/81 and was recorded per L.C.R.C. #2526.

B. Description of corner evidence found and/or method applied in restoring or reestablishing corner:

B-5 Found a Standard Kent County Monument 1.5' North of the C/L of 76th Street (bit.) running East and West on line of a fence and tree row running North per L.C.R.C.'s #2526 and #5934 as set by J. Bueche in place of a 3/4" x 18" iron he found which checked L.C.R.C.'s #512 and #957.

L.C.R.C. #2526

L.C.R.C. #5934

K. C. Remon. tag & nail in South side 12" Maple N 65° W 115.85'
K. C. Remon. tag & nail in North side Power pole S 77° W 135.40'
K. C. Remon. tag & nail in North side Power pole S 50° E 82.86'
K. C. Remon. tag & nail in East side 10" Apple North 34.38'
SW cor. brick house N 25° E 166.64'
SW cor. conc. porch to house N 25° W 193.21'
fence & tree row North
C/L blktp. E & W is South 1' M/L

KC Remon. tag & nail S. side 15" Elm N 65° W 115.80'
KC Remon. tag & nail N. side P. Pole S 77° W 135.30'
KC Remon. tag & nail N. side P. Pole S 50° E 82.81' (m. 82.87')
KC Remon. tag & nail E. side 12" Apple N 00° E 34.34' (m. 39.27')
SW cor. brick house N 25° E 166.64' (m. 166.60')
SW (SE) cor. conc. porch to house N 25° W 193.21' (m. 193.11')

The selected location is accepted by me and is generally accepted by professional surveyors as the best available evidence of the position of the original corner.

C. Description of monument for corner and accessories established to perpetuate locating the position of the corner:

B-5 Standard Kent County Monument

Nail & K.C. remon. tag on S side 15" Elm N 65° W 115.80'
Nail & K.C. remon. tag on W side P. pole S 77° W 135.30'
Nail & K.C. remon. tag on N side P. pole S 50° E 82.87'
KC Remon. tag & nail E. side 12" Apple N 00° E 34.34' (m. 39.27')
SW cor. brick hse. N 25° E 166.60'
SE cor. porch N 25° W 193.11'

Signed by Randy J. Kolehouse Date 10/9/96
EARTH TECH

Surveyor's Michigan License No. 25854

P.A. 345 1990 KENT COUNTY

PEER APPROVED 7/29/96

CHAIRMAN Hans Hepler

