

SURVEY & REMONUMENTATION

~~\$7.00~~
\$2.00

FEB 14 1997

COMMISSION

LAND CORNER RECORDATION CERTIFICATE
Filing Requirement of Act 74, Mich. P.A. 1970
KENT COUNTY REMONUMENTATION

For corners in

Kent (County)	Located in:	Caledonia Township	Corner Code #
1. Public Land Survey	T <u>5N</u>	R <u>10W</u>	<u>B-9</u>
	T _____	R _____	_____
	T _____	R _____	_____
	T _____	R _____	_____
2. Property Controlling in Section	S _____	T _____	R _____
	S _____	T _____	R _____
3. Miscellaneous Property in Sec.	S _____	T _____	R _____
	S _____	T _____	R _____
4. Lot No. _____, Recorded Plat _____			
5. Private Claims _____			

REG. OF DEEDS

Randy J. Kolehouse

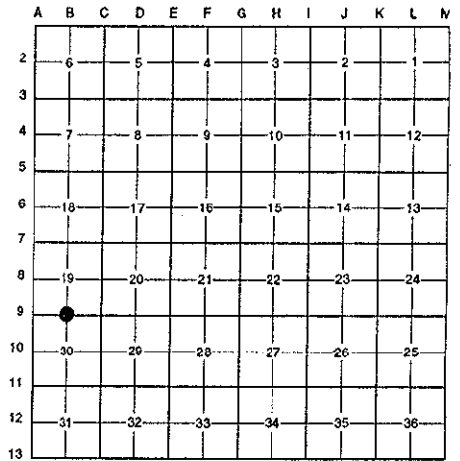
95 NOV -8 AM 9:16

STATE OF MICHIGAN
COUNTY OF KENT
RECEIVED FOR RECORD

9450

Register of Deeds Stamp & File Number

I, Randy Kolehouse, in a field survey on April 9 19 96, do hereby certify that under requirements of P.A. 74 Michigan P.A. of 1970, the corner points mentioned in lines 1 and 2 above were in conformance with regulations and rules therefore as required in the current manual of survey instructions of the United States Department of the interior, Bureau of Land Management or by a decree of a Court of Law and/or that the corner points mentioned in lines 3, 4 and 5 above were in conformance with the rules of the Michigan Board of Land Surveyors or by a Decree of a Court of Law; established, re-established, monumented, re-monumented, recovered, found as expressed below:



NOTE: Not more than 4 corners, all in the same town and range, may be recorded on this certificate.

A. Description of original monument and accessories and/or subsequent restoration:

B-9	1831	G.L.O. Notes	Mullett	Set Post
	1963	Witness Map	K.C. Surveyor	Boat Spike
	1972	L.C.R.C. #261	Medema, Van Kooten & Assoc.	Square Spike
	1981	L.C.R.C. #2528	J. Bueche	Fnd. Boat Spike / Set K.C. Monument
	1991	L.C.R.C. #5936	William Byl	Kent County Monument

This corner was originally approved by the Kent County Remonumentation Peer Group and monumented by J. Bueche on 12/23/81 and was recorded per L.C.R.C. #2528.

B. Description of corner evidence found and/or method applied in restoring or reestablishing corner:

B-9 Found a Standard Kent County Monument in the C/L of 92nd Street running East and West per L.C.R.C.'s #2528 and #5936 as set by J. Bueche in place of a boat spike he found which checked L.C.R.C. #261 and the K.C. Surveyor's records.

L.C.R.C. #2528

L.C.R.C. #5936

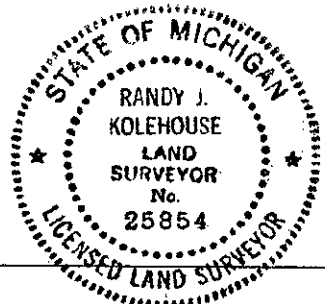
PK nail in North side Power pole N 07° E 65.20'	KC Remon. tag & nail E. side P. Pole N 07° E 65.18' (m. 65.21')
	KC Remon. tag & nail N. side RR tie fence post S 65° W 60.93' (m. 61.05')
	KC Remon. tag & nail S. side 36" Oak N 80° W 176.83' (m. 176.92')
	Cut "X" top E. end conc. driveway culv. N 55° E 35.49' (m. 35.51')

The selected location is accepted by me and is generally accepted by professional surveyors as the best available evidence of the position of the original corner.

C. Description of monument for corner and accessories established to perpetuate locating the position of the corner:

B-9 Standard Kent County Monument

- Nail & K.C. remon. tag on E side P. pole N 07° E 65.21'
- Nail & K.C. remon. tag on N side RR tie fence cor. S 65° W 61.05'
- Nail & K.C. remon. tag on S side 36" Oak N 80° W 176.92'
- "X" cut top E end conc. drive culvert N 55° E 35.51'
- Nail & K.C. remon. tag on E side 5"-6" Maples N 40° W 38.74'



Signed by Randy J. Kolehouse

Date 10/8/96

Surveyor's Michigan License No. 25854

P.A. 345 1990 KENT COUNTY
PEER APPROVED 7/25/96
CHAIRMAN [Signature]