

SURVEY & REMONUMENTATION
 \$7.00
 \$2.00
 FEB 14 1997

LAND CORNER RECORDATION CERTIFICATE
Filing Requirement of Act 74, Mich. P.A. 1970
KENT COUNTY REMONUMENTATION

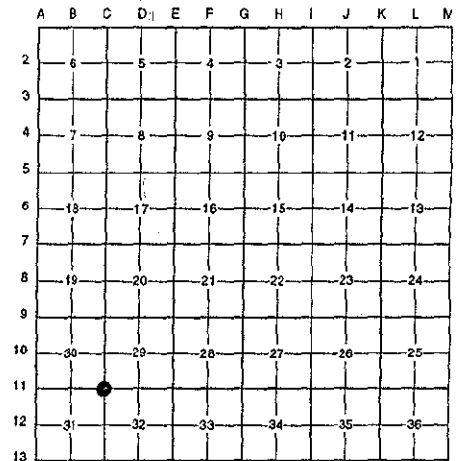
For corners in

| <u>Kent</u> (County) | Located in: Caledonia Township | Corner Code # |
|---------------------------------------|-----------------------------------|---------------|
| 1. Public Land Survey | T <u>5N</u> R <u>10W</u> | <u>C-11</u> |
| | T _____ R _____ | _____ |
| | T _____ R _____ | _____ |
| | T _____ R _____ | _____ |
| 2. Property Controlling in Section | S _____ T _____ R _____ | _____ |
| | S _____ T _____ R _____ | _____ |
| 3. Miscellaneous Property in Sec. | S _____ T _____ R _____ | _____ |
| | S _____ T _____ R _____ | _____ |

STATE OF MICHIGAN
 COUNTY OF KENT
 RECEIVED FOR RECORD
 96 NOV -8 AM 9:18
 REG. OF DEEDS
David Steward
 9464
 Register of Deeds Stamp & File Number

4. Lot No. _____, Recorded Plat _____
 5. Private Claims _____

I, Randy Kolehouse, in a field survey on April 3 19 96, do hereby certify that under requirements of P.A. 74 Michigan P.A. of 1970, the corner points mentioned in lines 1 and 2 above were in conformance with regulations and rules therefore as required in the current manual of survey instructions of the United States Department of the Interior, Bureau of Land Management or by a decree of a Court of Law and/or that the corner points mentioned in lines 3, 4 and 5 above were in conformance with the rules of the Michigan Board of Land Surveyors or by a Decree of a Court of Law; established, re-established, monumented, re-monumented, recovered, found as expressed below:



NOTE: Not more than 4 corners, all in the same town and range, may be recorded on this certificate.

A. Description of original monument and accessories and/or subsequent restoration:

| | | | | |
|------|------|----------------|----------------------|------------------------------------|
| C-11 | 1831 | G.L.O. Notes | Mullett | Set Post |
| | 1937 | Witness Map | K.C. Surveyor | 1/2" Solid Iron |
| | 1973 | L.C.R.C. #373 | Exxel Engineering | 1/2" Iron |
| | 1981 | L.C.R.C. #2295 | Nederveld Associates | Fnd. 1/2" Iron / Set K.C. Monument |
| | 1991 | L.C.R.C. #5948 | William Byle | K.C. Monument |

This corner was originally approved by the Kent County Remonumentation Peer Group and monumented by Nederveld Associates on 7/24/81 and was recorded per L.C.R.C. #2295.

B. Description of corner evidence found and/or method applied in restoring or reestablishing corner:

C-11 Found a Standard Kent County Monument at the C/L intersection of Kraft Avenue (extended) running North and on 100th Street (extended) running West per L.C.R.C.'s #2295 and #5948 as set by Nederveld Associates in place of a 1/2" solid iron they found in a concrete monument which checked L.C.R.C. #373 and the K.C. Surveyor's records.

L.C.R.C. #2295

Nail & K.C. Remon. tag S. side 10° Walnut S 88° E 40.53'
 Nail & K.C. Remon. tag N side P. pole S 52° E 62.31'
 Nail & K.C. Remon. tag NW side P. pole S 48° W 25.56'
 NE cor. garage S 32° E 37.74'

L.C.R.C. #5948

Nail & KC Remon. tag S. side 12° Walnut S 88° E 40.46'
 Nail & KC Remon. tag N. side P. Pole S 52° E 62.29'
 Nail & KC Remon. tag NW side P. Pole S 48° W 25.59'
 NE cor. garage S 32° E 37.74' (m. 37.70')
 Nail & KC Remon. tag E. side P. Pole S 20° W 79.51'

The selected location is accepted by me and is generally accepted by professional surveyors as the best available evidence of the position of the original corner.

C. Description of monument for corner and accessories established to perpetuate locating the position of the corner:

C-11 Standard Kent County Monument

Nail & K.C. remon. tag on S side 12" Walnut S 88° E 40.46'
 Nail & K.C. remon. tag on N side P. pole S 52° E 62.29'
 Nail & K.C. remon. tag on NW side P. pole S 48° W 25.59'
 NE cor. garage S 32° E 37.70'
 Nail & K.C. remon. tag on E side P. pole S 20° W 79.51'

Signed by Randy J. Kolehouse
 EARTH TECH

Date 10/8/96

Surveyor's Michigan License No. 25854

P.A. 345 1990 KENT COUNTY
 PEER APPROVED 7/29/96
 CHAIRMAN Steve Stuber

