

**SURVEY & REMONUMENTATION**

\$7.00  
\$2.00

FEB 14 1997

COMMISSION

**LAND CORNER RECORDATION CERTIFICATE**  
Filing Requirement of Act 74, Mich. P.A. 1970  
KENT COUNTY REMONUMENTATION

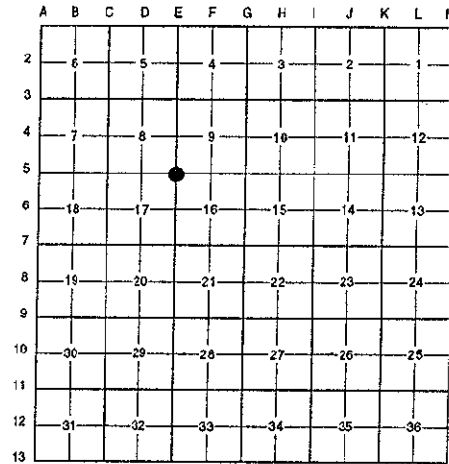
For corners in

Kent (County)	Located in: Caledonia Township	Corner Code #
1. Public Land Survey	T <u>5N</u> R <u>10W</u>	<u>E-5</u>
	T _____ R _____	_____
	T _____ R _____	_____
	T _____ R _____	_____
2. Property Controlling in Section	S _____ T _____ R _____	_____
	S _____ T _____ R _____	_____
3. Miscellaneous Property in Sec.	S _____ T _____ R _____	_____
	S _____ T _____ R _____	_____

STATE OF MICHIGAN  
COUNTY OF KENT  
RECEIVED FOR RECORD  
96 NOV -8 AM 9:19  
REG. OF DEEDS  
*David J. Sandberg*  
**9480**  
Register of Deeds Stamp & File Number

4. Lot No. \_\_\_\_\_, Recorded Plat \_\_\_\_\_  
5. Private Claims \_\_\_\_\_

I, Randy Kolehouse, in a field survey on April 4 19 96, do hereby certify that under requirements of P.A. 74 Michigan P.A. of 1970, the corner points mentioned in lines 1 and 2 above were in conformance with regulations and rules therefore as required in the current manual of survey instructions of the United States Department of the interior, Bureau of Land Management or by a decree of a Court of Law and/or that the corner points mentioned in lines 3, 4 and 5 above were in conformance with the rules of the Michigan Board of Land Surveyors or by a Decree of a Court of Law; established, re-established, monumented, re-monumented, recovered, found as expressed below:



**NOTE: Not more than 4 corners, all in the same town and range, may be recorded on this certificate.**

**A. Description of original monument and accessories and/or subsequent restoration:**

E-5	1831	G.L.O. Notes	Mullett	Set Post
	1951	Witness Map	K.C. Surveyor	Monument Box
	1951	Notes	Williams & Works	Iron
	1972	L.C.R.C. #258	Exxel Engineering	Spike in Monument Box
	1973	L.C.R.C. #408	Medema, Van Kooten & Assoc.	Nail in Monument Box
	1976	L.C.R.C. #956	P. McPherson	Iron in Monument Box
	1981	L.C.R.C. #2060	Nederveld & Jonker	Fnd. Bt. Spike in Monument Box / Set K.C. Monument
	1991	L.C.R.C. #5960	William Byl	K.C. Monument in a Monument Box

This corner was originally approved by the Kent County Remonumentation Peer Group and monumented by Nederveld & Jonker on 6/9/81 and was recorded per L.C.R.C. #2060.

**B. Description of corner evidence found and/or method applied in restoring or reestablishing corner:**

E-5 Found a Standard Kent County Monument in a monument box at the C/L intersection of 76th Street (bit.) running East and West and Cherry Valley Avenue (bit.) running North and South per L.C.R.C.'s #2060 and #5960 as set by Nederveld & Jonker in place of a boat spike they found in a monument box which checked L.C.R.C.'s #956, #408 and #258, the 1951 notes of Williams & Works, and the K.C. Surveyor's records.

L.C.R.C. #2060

L.C.R.C. #5960

Nail & Remon. tag N side 20" Walnut N 60° E 53.72'  
Nail & Remon tag N side P. pole N 56° W 49.21'  
Nail & Remon tag W side P. pole S 42° W 73.61'

Nail & KC Remon. tag N. side 24" Walnut N 60° E 53.69'  
Nail & KC Remon. tag N. side P. Pole N 56° W 49.24'  
Nail & KC Remon. tag W. side P. Pole S 42° W 73.67'  
Nail & KC Remon. tag SW side Guy Pole S 60° E 60.14'  
SE cor. gar. fdn. N 45° W 118.96'

The selected location is accepted by me and is generally accepted by professional surveyors as the best available evidence of the position of the original corner.

**C. Description of monument for corner and accessories established to perpetuate locating the position of the corner:**

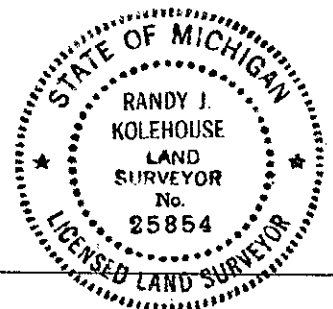
E-5 Standard Kent County Monument in a Monument Box

Nail & K.C. remon. tag on N side 24" Walnut N 60° E 53.69'  
Nail & K.C. remon. tag on N side P. pole N 56° W 49.24'  
Nail & K.C. remon. tag on W side P. pole S 42° W 73.67'  
Nail & K.C. remon. tag on SW side Guy pole S 60° E 60.14'  
SE cor. gar. fndn. N 45° W 118.96'  
Nail & K.C. remon. tag on SE side 24" Walnut S 15° E 103.90'

Signed by *Randy J. Kolehouse* Date 10/8/96

EARTH TECH

Surveyor's Michigan License No. 25854



P.A. 345 1990 KENT COUNTY  
PEER APPROVED 7/25/96  
CHAIRMAN [Signature]