

**SURVEY & REMONUMENTATION**

~~\$7.00~~  
\$2.00

FEB 14 1997

**LAND CORNER RECORDATION CERTIFICATE**  
Filing Requirement of Act 74, Mich. P.A. 1970  
KENT COUNTY REMONUMENTATION

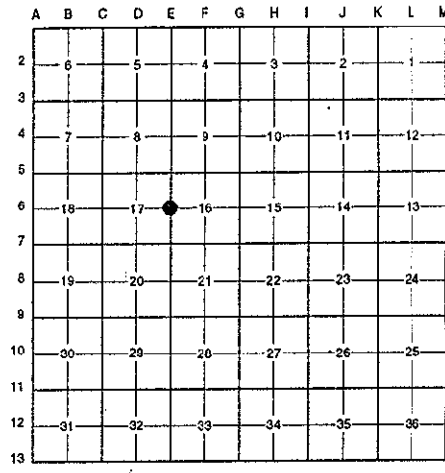
For corners in **COMMISSION**

Kent (County)	Located in:	Caledonia Township	Corner Code #
1. Public Land Survey	T <u>5N</u>	R <u>10W</u>	<u>E-6</u>
	T _____	R _____	_____
	T _____	R _____	_____
	T _____	R _____	_____
2. Property Controlling in Section	S _____	T _____	R _____
	S _____	T _____	R _____
3. Miscellaneous Property in Sec.	S _____	T _____	R _____
	S _____	T _____	R _____

STATE OF MICHIGAN  
COUNTY OF KENT  
RECEIVED FOR RECORD  
96 NOV - 8 AM 9:19  
REG. OF DEEDS  
*Randy J. Kolehouse*  
**9481**  
Register of Deeds Stamp & File Number

4. Lot No. \_\_\_\_\_, Recorded Plat \_\_\_\_\_  
5. Private Claims \_\_\_\_\_

I, Randy Kolehouse, in a field survey on April 4 19 96, do hereby certify that under requirements of P.A. 74 Michigan P.A. of 1970, the corner points mentioned in lines 1 and 2 above were in conformance with regulations and rules therefore as required in the current manual of survey instructions of the United States Department of the Interior, Bureau of Land Management or by a decree of a Court of Law and/or that the corner points mentioned in lines 3, 4 and 5 above were in conformance with the Michigan Board of Land Surveyors, or by a Decree of a Court of Law; established, re-established, monumented, re-monumented, or covered as expressed below:



**NOTE: Not more than 4 corners, all in the same town and range, may be recorded on this certificate.**

**A. Description of original monument and accessories and/or subsequent restoration:**

E-6	1831	G.L.O. Notes	Mullet	Set Post
	1960	Witness Map	K.C. Surveyor	Iron in Monument Box
	1973	L.C.R.C. #651	F. Spicer	Iron in Monument Box
	1087	L.C.R.C. #956	P. McPherson	Iron in Monument Box
	1981	L.C.R.C. #2054	Nederveld & Jonker	Fnd. "T" Iron in Monument Box / Set K.C. Monument
	1991	L.C.R.C. #5961	William Byl	K.C. Monument in Monument Box

This corner was originally approved by the Kent County Remonumentation Peer Group and monumented by Nederveld & Jonker on 7/7/81 and was recorded per L.C.R.C. #2054.

**B. Description of corner evidence found and/or method applied in restoring or reestablishing corner:**

E-6 Found a Standard Kent County Monument in a monument box 1' ± West of the C/L of Cherry Valley Avenue (bit.) running North and South on line of tree row running East and West per L.C.R.C.'s #2054 and #5961 as set by Nederveld & Jonker in place of a "T" iron they found in a monument box which checked L.C.R.C.'s #956 and #651 and the K.C. Surveyor's records.

**L.C.R.C. #2054**

Nail & Remon. tag N'ly side 12" Walnut N 40° E 42.09'  
Nail & Remon. tag SW side 16" Walnut S 45° E 39.15'  
Nail & Remon. tag N side P. pole N 85° W 79.97'

**L.C.R.C. #5961**

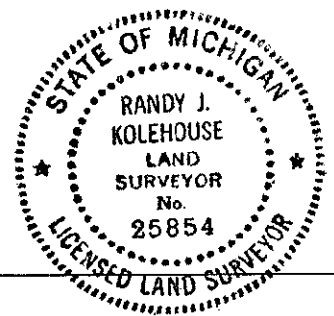
Nail & KC Remon. tag N'ly side 18" Walnut N 40° E 42.09'  
Nail & KC Remon. tag SW side 24" Walnut S 45° E 39.15'  
Nail & KC Remon. tag N side P. Pole N 85° W 79.97'  
Nail & KC Remon. tag NW side P. Pole N 50° E 126.74'  
W. face of round steel fence post N 90° E 26.30'  
NW cor. (brick) gar. S 60° E 140.88'

The selected location is accepted by me and is generally accepted by professional surveyors as the best available evidence of the position of the original corner.

**C. Description of monument for corner and accessories established to perpetuate locating the position of the corner:**

E-6 Standard Kent County Monument in a Monument Box

Nail & K.C. remon. tag on NW side 18" Walnut N 40° E 42.09'  
Nail & K.C. remon. tag on SW side 24" Walnut S 45° E 39.15'  
Nail & K.C. remon. tag on N side P. pole N 85° W 79.97'  
Nail & K.C. remon. tag on NW side P. pole N 50° E 126.74'  
S side C/L steel fence post N 90° E 26.30'  
NW cor. (brick) gar. #8010 S 60° E 140.88'



Signed by *Randy J. Kolehouse* Date 10/8/96  
EARTH TECH

Surveyor's Michigan License No. 25854

P.A. 345 1990 KENT COUNTY  
PEER APPROVED 7/25/96  
CHAIRMAN *Harold Kupiec*