

SURVEY & REMONUMENTATION

\$7.00
\$2.00

FEB 14 1997

LAND CORNER RECORDATION CERTIFICATE
Filing Requirement of Act 74, Mich. P.A. 1970
KENT COUNTY REMONUMENTATION

For corners in

COMMISSION

Kent (County)	Located in: Caledonia Township	Corner Code #
1. Public Land Survey	T <u>5N</u> R <u>10W</u>	<u>E-8</u>
	T _____ R _____	_____
	T _____ R _____	_____
	T _____ R _____	_____
2. Property Controlling in Section	S _____ T _____ R _____	_____
	S _____ T _____ R _____	_____
3. Miscellaneous Property in Sec.	S _____ T _____ R _____	_____
	S _____ T _____ R _____	_____

STATE OF MICHIGAN
COUNTY OF KENT
RECEIVED FOR RECORD

96 NOV -8 AM 9:19

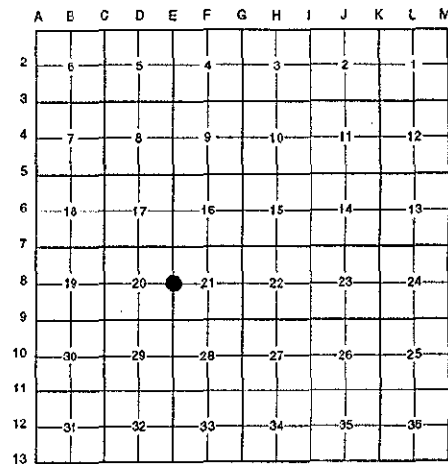
REG. OF DEEDS

Randy J. Kolehous

9483
Register of Deeds Stamp & File Number

4. Lot No. _____, Recorded Plat _____
5. Private Claims _____

I, Randy Kolehous, in a field survey on April 5 19 96, do hereby certify that under requirements of P.A. 74 Michigan P.A. of 1970, the corner points mentioned in lines 1 and 2 above were in conformance with regulations and rules therefore as required in the current manual of survey instructions of the United States Department of the interior, Bureau of Land Management or by a decree of a Court of Law and/or that the corner points mentioned in lines 3, 4 and 5 above were in conformance with the rules of the Michigan Board of Land Surveyors or by a Decree of a Court of Law; established, re-established, monumented, re-monumented, recovered, found as expressed below:



NOTE: Not more than 4 corners, all in the same town and range, may be recorded on this certificate.

A. Description of original monument and accessories and/or subsequent restoration:

Date	Description	Surveyor	Monument
E-8 1831	G.L.O. Notes	Mullett	Set Post
1966	Witness Map	K.C. Surveyor	Boat Spike
1973	L.C.R.C. #651	F. Spicer	Boat Spike
1981	L.C.R.C. #2543	J. Bueche	Fnd. "T" Iron / Set K.C. Monument
1991	L.C.R.C. #5963	William Byl	K.C. Monument

This corner was originally approved by the Kent County Remonumentation Peer Group and monumented by J. Bueche on 12/22/81 and was recorded per L.C.R.C. #2543.

B. Description of corner evidence found and/or method applied in restoring or reestablishing corner:

E-8 Found a Standard Kent County Monument 3' ± East of West edge of Cherry Valley Avenue (bit.) running North and South on line of a tree row running East per L.C.R.C.'s #2543 and #5963 as set by J. Bueche in place of a "T" iron under 8" of blacktop he found which checked L.C.R.C. #651 and the K.C. Surveyor's records.

L.C.R.C. #2543

K. C. Remon. tag & nail in NE side Power pole N 35° W 75.81'
K. C. Remon. tag & nail in NW side 14" Maple S 35° W 62.45'
K.C. Remon. tag & nail in SE side Power pole S 20° W 179.33'
West edge blktp. is West 3.0' M/L
On tree line East

L.C.R.C. #5963

KC Remon. tag & nail NE side P. Pole N 35° W 75.71' (m. 75.67')
KC Remon. tag & nail NW side 20" Maple S 35° W 62.40'
KC Remon. tag & nail SE side P. Pole S 20° W 179.33'
KC Remon. tag & nail N side 12" Elm N 90° E 81.43' (m. 81.43')
West edge blktp. is West 3.0' m/l

The selected location is accepted by me and is generally accepted by professional surveyors as the best available evidence of the position of the original corner.

C. Description of monument for corner and accessories established to perpetuate locating the position of the corner:

E-8 Standard Kent County Monument

Nail & K.C. remon. tag on NE side P. pole N 35° W 75.67'
Nail & K.C. remon. tag on NW side 20" Maple S 35° W 62.40'
Nail & K.C. remon. tag on SE side P. pole S 20° W 179.33'
Nail & K.C. remon. tag on N side 12" Elm N 90° E 81.43'

Signed by *Randy J. Kolehous* Date 10/8/96
EARTH TECH

Surveyor's Michigan License No. 25854

P.A. 345 1990 KENT COUNTY
PEER APPROVED 7/25/96
CHAIRMAN *Randy Kolehous*

