

SURVEY & REMONUMENTATION

FEB 14 1997

LAND CORNER RECORDATION CERTIFICATE
Filing Requirement of Act 74, Mich. P.A. 1970
KENT COUNTY REMONUMENTATION

For corners in

COMMISSION

Kent (County)	Located in: Caledonia Township	Corner Code #
1. Public Land Survey	T <u>5N</u> R <u>10W</u>	<u>E-9</u>
	T _____ R _____	_____
	T _____ R _____	_____
	T _____ R _____	_____
2. Property Controlling in Section	S _____ T _____ R _____	_____
	S _____ T _____ R _____	_____
3. Miscellaneous Property in Sec.	S _____ T _____ R _____	_____
	S _____ T _____ R _____	_____

REC. OF DEEDS

Lucy Stand

96 NOV - 8 AM 9:19

STATE OF MICHIGAN
 COUNTY OF KENT
 RECEIVED FOR RECORD

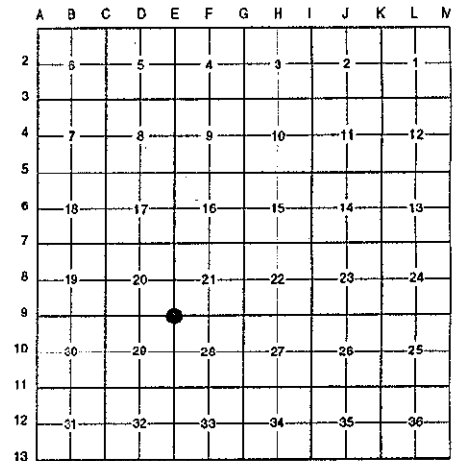
9484

Register of Deeds Stamp & File Number

4. Lot No. _____, Recorded Plat _____
 5. Private Claims _____

I, Randy Kolehouse, in a field survey on April 5 19 96, do hereby certify that under requirements of P.A. 74 Michigan P.A. of 1970, the corner points mentioned in lines 1 and 2 above were in conformance with regulations and rules therefore as required in the current manual of survey instructions of the United States Department of the interior, Bureau of Land Management or by a decree of a Court of Law and/or that the corner points mentioned in lines 3, 4 and 5 above were in conformance with the rules of the Michigan Board of Land Surveyors or by a Decree of a Court of Law; established, re-established, monumented, re-monumented, recovered, found as expressed below:

NOTE: Not more than 4 corners, all in the same town and range, may be recorded on this certificate.



A. Description of original monument and accessories and/or subsequent restoration:

E-9	1831	G.L.O. Notes	Mullett	Set Post
	1941-48	Witness Map	K.C. Surveyor	Iron & Stone
	1973	L.C.R.C. #651	F. Spicer	Boat Spike in Monument Box
	1974	L.C.R.C. #643	Medema, Van Kooten & Assoc.	Iron in Monument Box
	1980	L.C.R.C. #1480	Williams & Works	Fnd. Bolt Spike in Mon. Box / Set K.C. Monument
	1991	L.C.R.C. #5964	William Byl	K.C. Monument

This corner was originally approved by the Kent County Remonumentation Peer Group and monumented by Williams & Works on 11/26/80 and was recorded per L.C.R.C. #1480.

B. Description of corner evidence found and/or method applied in restoring or reestablishing corner:

E-9 Found a Standard Kent County Monument 3' West of the C/L intersection of Cherry Valley Avenue (bit.) running North and South and 92nd Street running East (gravel) per L.C.R.C.'s #1480 and #5964 as set by Williams & Works in place of a round boat spike they found in a monument box which checked L.C.R.C.'s #643, #651 and the K.C. Surveyor's records.

L.C.R.C. #1480

L.C.R.C. #5964

K.C.R. Tag & Nail in NW Side 12" Maple N 20° E 153.06'
 K.C.R. Tag & Nail in W Side 12" Maple N 25° W 87.70'
 K.C.R. Tag & Nail in SW Side 12" Maple N 60° W 49.30'
 NW Cor. Block Bldg. S 60° E 115.34'
 North-South Bit. Road C/L E 3' ±

KC Remon. tag & nail NW side 14" Maple N 20° E 152.95' (m. 152.83')
 KC Remon. tag & nail W. side 18" Maple N 25° W 87.14' (m. 87.05')
 KC Remon. tag & nail SW side 16" Maple N 60° W 49.25' (m. 49.23')
 NW Cor. Block Bldg. S 60° E 115.51' (m. 115.46')

The selected location is accepted by me and is generally accepted by professional surveyors as the best available evidence of the position of the original corner.

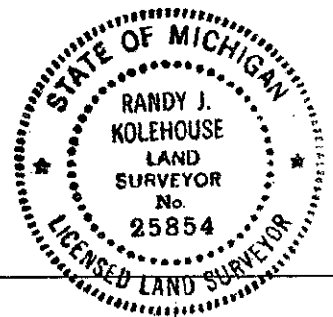
C. Description of monument for corner and accessories established to perpetuate locating the position of the corner:

E-9 Standard Kent County Monument

Nail & K.C. remon. tag on NW side 14" Maple N 20° E 152.83'
 KC Remon. tag & nail W. side 18" Maple N 25° W 87.05'
 Nail & K.C. remon. tag on SW side 16" Maple N 60° W 49.23'
 Nail & K.C. remon. tag on S side T. & Lt. pole N 70° W 61.82'
 Nail & K.C. remon. tag on NW side 18" Elm N 70° E 82.25'
 NW cor. block bldg. S 60° E 115.46'

Signed by *Randy J. Kolehouse*
 EARTH TECH

Date 10/8/96



Surveyor's Michigan License No. 25854

P.A. 345 1990 KENT COUNTY
 PEER APPROVED 7/29/96
 CHAIRMAN *[Signature]*