

SURVEY & REMONUMENTATION

\$7.00
\$2.00

FEB 14 1997

COMMISSION LAND CORNER RECORDATION CERTIFICATE
Filing Requirement of Act 74, Mich. P.A. 1970

For corners in Kent (County) Located in: Caledonia Township Corner Code # _____

For corners in	Located in:	Corner Code #
<u>Kent</u> (County)	<u>Caledonia</u> Township	_____
1. Public Land Survey	T <u>5N</u> R <u>10W</u>	<u>E-10</u>
	T _____ R _____	_____
	T _____ R _____	_____
	T _____ R _____	_____
2. Property Controlling in Section	S _____ T _____ R _____	_____
	S _____ T _____ R _____	_____
3. Miscellaneous Property in Sec.	S _____ T _____ R _____	_____
	S _____ T _____ R _____	_____

STATE OF MICHIGAN
COUNTY OF KENT
RECEIVED FOR RECORD

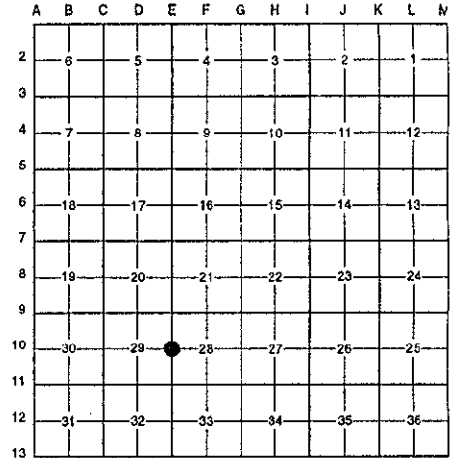
96 NOV -8 AM 9:19

REG. OF DEEDS
[Signature]
9485

Register of Deeds Stamp & File Number

4. Lot No. _____, Recorded Plat _____
5. Private Claims _____

I, Randy Kolehouse, in a field survey on April 5 19 96, do hereby certify that under requirements of P.A. 74 Michigan P.A. of 1970, the corner points mentioned in lines 1 and 2 above were in conformance with regulations and rules therefore as required in the current manual of survey instructions of the United States Department of the Interior, Bureau of Land Management or by a decree of a Court of Law and/or that the corner points mentioned in lines 3, 4 and 5 above were in conformance with the rules of the Michigan Board of Land Surveyors or by a Decree of a Court of Law; established, re-established, monumented, re-monumented, recovered, found as expressed below:



NOTE: Not more than 4 corners, all in the same town and range, may be recorded on this certificate.

A. Description of original monument and accessories and/or subsequent restoration:

E-10	1831	G.L.O. Notes	Mullett	Set Post
	N/A	Witness Map	K.C. Surveyor	Iron
	1973	L.C.R.C. #373	Exxel Engineering	Boat Spike in Monument Box
	1974	L.C.R.C. #643	Medema, Van Kooten & Assoc.	Boat Spike in Monument Box
	1982	L.C.R.C. #2601	J. Bueche	Fnd. Boat Spike / Set K.C. Monument in Mon. Box
	1991	L.C.R.C. #5965	William Byl	K.C. Monument in Monument Box

This corner was originally approved by the Kent County Remonumentation Peer Group and monumented by J. Bueche on 1/27/82 and was recorded per L.C.R.C. #2601.

B. Description of corner evidence found and/or method applied in restoring or reestablishing corner:

E-10 Found a Standard Kent County Monument 10' ± East of the C/L of Cherry Valley Avenue (bit.) running North and South per L.C.R.C.'s #2601 and #5965 as set by J. Bueche in place of a 12" boat spike he found in a monument box which checked L.C.R.C.'s #643 and #373 and the K.C. Surveyor's records.

L.C.R.C. #2601

- NW cor. block bldg. S 70° E 112.62'
- SW cor. block bldg. S 45° E 134.35'
- C/L MH N 20° w 14.65'
- K. C. Remon. tag & nail in N side Power pole N 75° W 96.47'
- C/L M-37 blktp. N-S is West 10.5' M/L

L.C.R.C. #5965

- NW cor. bldg. entrance (stucco siding) S 70° E 112.35' (m. 112.28')
- SW cor. bldg. (stucco siding) S 45° E 134.25'
- NW cor. bldg. (stucco siding) S 80° E 162.65' (m. 147.52')
- C/L MH N 20° W 14.65'
- KC Remon. tag & nail N. side P. Pole N 75° W 96.47' (m. 96.49')
- NE cor. brick bldg. S 70° W 145.50' (m. 145.56')

The selected location is accepted by me and is generally accepted by professional surveyors as the best available evidence of the position of the original corner.

C. Description of monument for corner and accessories established to perpetuate locating the position of the corner.

E-10 Standard Kent County Monument

- Nail & K.C. remon. tag on N side P. pole N 75° W 96.49'
- NW cor. bldg. (stucco) S 80° E 147.52'
- NW cor. entrance (stucco) S 70° E 112.28'
- SW cor. bldg. (stucco) S 45° E 134.25'
- C/L MH N 20° W 14.65'
- NE cor. brick bldg. S 70° W 145.56'

Signed by Randy J. Kolehouse EARTH TECH

Date 10/5/96

Surveyor's Michigan License No. 25854



P.A. 345 1990 KENT COUNTY
PEER APPROVED 7/25/96
CHAIRMAN [Signature]