

SURVEY & REMONUMENTATION

FEB 14 1997

COMMISSION LAND CORNER RECORDATION CERTIFICATE
Filing Requirement of Act 74, Mich. P.A. 1970

For corners in Kent (County) Located in: Caledonia Township Corner Code #

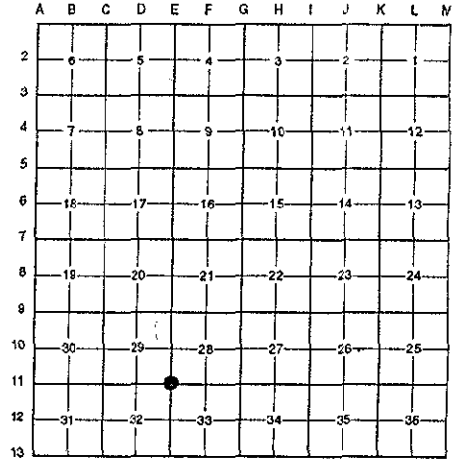
Corner Code #	Corner Code #	Corner Code #	Corner Code #
1. Public Land Survey	T <u>5N</u> R <u>10W</u>	<u>E-11</u>	
	T _____ R _____	_____	_____
	T _____ R _____	_____	_____
	T _____ R _____	_____	_____
2. Property Controlling in Section	S _____ T _____ R _____	_____	_____
	S _____ T _____ R _____	_____	_____
3. Miscellaneous Property in Sec.	S _____ T _____ R _____	_____	_____
	S _____ T _____ R _____	_____	_____

STATE OF MICHIGAN
 COUNTY OF KENT
 RECEIVED FOR RECORD
 96 NOV -8 AM 9:19
 REG. OF DEEDS
Lucy Standa
9486
 Register of Deeds Stamp & File Number

4. Lot No. _____, Recorded Plat _____
 5. Private Claims _____

I, Randy Kolehouse, in a field survey on April 5 19 96, do hereby certify that under requirements of P.A. 74 Michigan P.A. of 1970, the corner points mentioned in lines 1 and 2 above were in conformance with regulations and rules therefore as required in the current manual of survey instructions of the United States Department of the Interior, Bureau of Land Management or by a decree of a Court of Law and/or that the corner points mentioned in lines 3, 4 and 5 above were in conformance with the rules of the Michigan Board of Land Surveyors or by a Decree of a Court of Law; established, re-established, monumented, re-monumented, recovered, found as expressed below:

NOTE: Not more than 4 corners, all in the same town and range, may be recorded on this certificate.



A. Description of original monument and accessories and/or subsequent restoration:

Date	Description	Location	Monument
E-11 1831	G.L.O. Notes	Mullett	Set Post
1941	Witness Map	K.C. Surveyor	1-1/4" Iron in Mon. Box
1973	L.C.R.C. #373	Exxel Engineering	Boat Spike in Monument Box
1982	L.C.R.C. #2604	J. Bueche	Fnd. 12" Boat Spike in Mon. Box / Set K.C. Monument in Mon. Box
1991	L.C.R.C. #5966	William Byl	K.C. Monument

This corner was originally approved by the Kent County Remonumentation Peer Group and monumented by J. Bueche on 1/27/82 and was recorded per L.C.R.C. #2604.

B. Description of corner evidence found and/or method applied in restoring or reestablishing corner:

E-11 Found a Standard Kent County Monument in a monument box 5.7' East of the C/L of Cherry Valley Avenue (bit.) running North and South and on the C/L of 100th Street (bit.) running East and West per L.C.R.C.'s #2604 and #5966 as set by J. Bueche in place of 12" boat spike he found in a monument box which checked L.C.R.C. #213 and the K.C. Surveyor's records.

L.C.R.C. #2604

L.C.R.C. #5966

K. C. Remon. tag & nail in NE side of Power Pole N 65° W 99.81'
 M.D.O.T. marker in conc. N 40° E 72.00'
 NW angle point of conc. headwall S 20° E 67.84'
 NE angle point of conc. headwall S 35° W 72.11'
 "X" cut in conc. curb N 50° W 46.11'
 C/L blktp. M-37 is West 5.7' M/L
 On C/L blktp. E-W

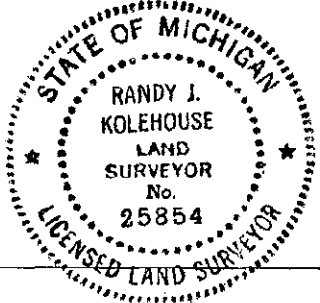
KC Remon. tag & nail SE side P. Pole N 65° E 99.78'
 M.D.O.T. marker in conc. N 40° E 72.00' (m. 72.05')
 NW angle point in conc. headwall S 20° E 67.84' (m. 67.99')
 NE angle point in conc. headwall S 35° W 72.11' (m. 72.18')
 "X" cut in conc. curb N 50° W 46.11'
 KC Remon. tag & nail NW side Guy Pole S 65° W 66.35' (m. 66.30')

The selected location is accepted by me and is generally accepted by professional surveyors as the best available evidence of the position of the original corner.

C. Description of monument for corner and accessories established to perpetuate locating the position of the corner.

E-11 Standard Kent County Monument in a Monument Box

Nail & K.C. remon. tag on SE P. pole N 65° E 99.78'
 MDOT marker in conc. N 40° E 72.05'
 "X" cut in curb N 50° W 46.11'
 Nail & K.C. remon. tag on NW side Guy pole S 65° W 66.30'
 NE cor. (angle pt.) in conc. headwall S 35° W 72.18'
 NW cor. (angle pt.) in conc. headwall S 20° E 67.99'



Signed by Randy J. Kolehouse
 EARTH TECH

Date 10/2/96

Surveyor's Michigan License No. 25854

P.A. 345 1990 KENT COUNTY

PEER APPROVED 7/25/96