

SURVEY & REMONUMENTATION

\$7.00
\$2.00

FEB 14 1997

LAND CORNER RECORDATION CERTIFICATE
Filing Requirement of Act 74, Mich. P.A. 1970
KENT COUNTY REMONUMENTATION

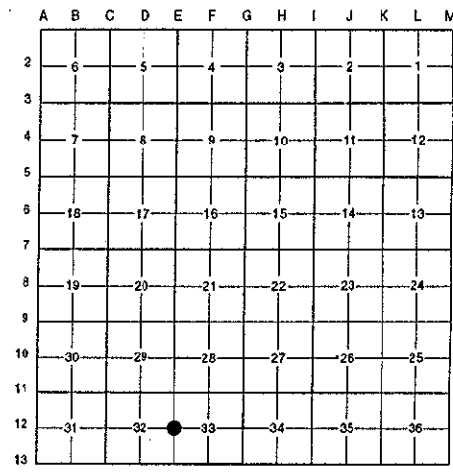
COMMISSION

For corners in

<u>Kent</u> (County)	Located in: Caledonia Township	Corner Code #
1. Public Land Survey	T <u>5N</u> R <u>10W</u>	<u>E-12</u>
	T _____ R _____	_____
	T _____ R _____	_____
	T _____ R _____	_____
2. Property Controlling in Section	S _____ T _____	_____
	S _____ T _____	_____
3. Miscellaneous Property in Sec.	S _____ T _____	_____
	S _____ T _____	_____
4. Lot No. _____, Recorded Plat _____		
5. Private Claims _____		

STATE OF MICHIGAN
 COUNTY OF KENT
 RECEIVED FOR RECORD
 96 NOV -8 AM 9:20
 REG. OF DEEDS
Randy Kolehuse
9487
 Register of Deeds Stamp & File Number

I, Randy Kolehuse, in a field survey on April 5 19 96, do hereby certify that under requirements of P.A. 74 Michigan P.A. of 1970, the corner points mentioned in lines 1 and 2 above were in conformance with regulations and rules therefore as required in the current manual of survey instructions of the United States Department of the interior, Bureau of Land Management or by a decree of a Court of Law; and/or that the corner points mentioned in lines 3, 4 and 5 above were in conformance with the rules of the Michigan Board of Land Surveyors or by a Decree of a Court of Law; established, re-established, monumented, re-monumented, recovered, found as expressed below:



NOTE: Not more than 4 corners, all in the same town and range, may be recorded on this certificate.

A. Description of original monument and accessories and/or subsequent restoration:

E-12	1831	G.L.O. Notes	Mullett	Set Post
	1972	L.C.R.C. #409	P. Van Kooten	P.K. Nail
	1982	L.C.R.C. #2811	Jonker Land Survey	Set K.C. Monument
	1991	L.C.R.C. #5967	William Byl	K.C. Monument

This corner was originally approved by the Kent County Remonumentation Peer Group and monumented by Rob Jonker on 5/7/91 and was recorded per L.C.R.C. #2811.

B. Description of corner evidence found and/or method applied in restoring or reestablishing corner:

E-12 Found a Standard Kent County Monument in a monument box in the C/L of Cherry Valley Avenue (bit.) running North and South on line of a power line running East and West and fence line running East per L.C.R.C.'s #2811 and #5967 as reset by William Byl using witnesses indicated in L.C.R.C. #2811.

L.C.R.C. #2811

L.C.R.C. #5967

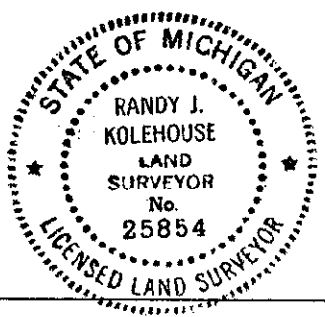
- | | |
|--|---|
| Remon. tag on N side p. pole N 90° E 61.55' | Nail & KC Remon. tag N. side P. Pole N 90° E 61.55' |
| Remon. tag on S side p. pole S 90° W 64.87' | Nail & KC Remon. tag S. side P. Pole S 90° W 64.97' (m. 65.02') |
| Remon. tag on SW side 8" Elm S 30° E 121.47' | Nail & KC Remon. tag SW side 14" Elm S 30° E 121.25' |
| On C/L N-S pavement | NW cor. conc. blk. hse. S 35° W 196.40' (m. 196.34') |
| On E-W pole line | |
| On line fence to East | |

The selected location is accepted by me and is generally accepted by professional surveyors as the best available evidence of the position of the original corner.

C. Description of monument for corner and accessories established to perpetuate locating the position of the corner:

E-12 Standard Kent County Monument in a Monument Box

- NW cor. conc. blk. hse. S 35° W 196.34'
- Nail & K.C. remon. tag on P. pole N 90° W 65.02'
- Nail & K.C. remon. tag on P. pole N 90° E 61.55'
- Nail & K.C. remon. tag on SW side 14" Elm 121.25'



Signed by *Randy J. Kolehuse*
EARTH TECH

Date 10/8/96

Surveyor's Michigan License No. 25854

P.A. 345 1990 KENT COUNTY

PEER APPROVED 7/29/96
CHAIRMAN [Signature]