

FEB 14 1997

COMMISSION

LAND CORNER RECORDATION CERTIFICATE

Filing Requirement of Act 74, Mich. P.A. 1970

KENT COUNTY REMONUMENTATION

For corners in

Kent  
(County)

Located in: Caledonia Township

Corner Code #

- |                                    |             |              |            |
|------------------------------------|-------------|--------------|------------|
| 1. Public Land Survey              | T <u>5N</u> | R <u>10W</u> | <u>F-3</u> |
|                                    | T _____     | R _____      | _____      |
|                                    | T _____     | R _____      | _____      |
|                                    | T _____     | R _____      | _____      |
| 2. Property Controlling in Section | S _____     | T _____      | R _____    |
|                                    | S _____     | T _____      | R _____    |
| 3. Miscellaneous Property in Sec.  | S _____     | T _____      | R _____    |
|                                    | S _____     | T _____      | R _____    |

4. Lot No. \_\_\_\_\_, Recorded Plat \_\_\_\_\_
5. Private Claims \_\_\_\_\_

STATE OF MICHIGAN  
COUNTY OF KENT  
RECEIVED FOR RECORD

96 NOV -8 AM 9:20

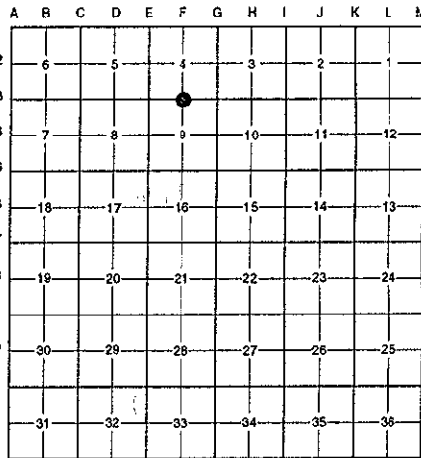
REG. OF DEEDS

*[Signature]*

9491

Register of Deeds Stamp & File Number

I, Randy Kolehouse, in a field survey on April 9 19 96, do hereby certify that under requirements of P.A. 74 Michigan P.A. of 1970, the corner points mentioned in lines 1 and 2 above were in conformance with regulations and rules therefore as required in the current manual of survey instructions of the United States Department of the interior, Bureau of Land Management or by a decree of a Court of Law and/or that the corner points mentioned in lines 3, 4 and 5 above were in conformance with the rules of the Michigan Board of Land Surveyors or by a Decree of a Court of Law; established, re-established, monumented, re-monumented, recovered, found as expressed below:



NOTE: Not more than 4 corners, all in the same town and range, may be recorded on this certificate.

A. Description of original monument and accessories and/or subsequent restoration:

F-3	1831	G.L.O. Notes	Mullett	Set Post
	1962	Witness Map	K.C. Surveyor	"X" in Concrete
	1971	L.C.R.C. #29	M. Chambers	1" Iron in Mon. Box
	1971	L.C.R.C. #116	F.E. Spicer	1" Iron in Mon. Box
	1982	L.C.R.C. #2654	Jonker Land Surveys	Fnd. 1" Iron in Mon. Box / Set K.C. Monument in Mon. Box
	1991	L.C.R.C. #5969	William Byl	K.C. Monument in a Mon. Box

This corner was originally approved by the Kent County Remonumentation Peer Group and monumented by Rob Jonker on 2/10/82 and was recorded per L.C.R.C. #2654.

B. Description of corner evidence found and/or method applied in restoring or reestablishing corner:

F-3 Found a Standard Kent County Monument in a monument box in the C/L of 68th Street (bit.) running East and West on line of fence running South per L.C.R.C.'s #2654 and #5969 as set by Rob Jonker in place of a 1" iron in a monument box he found which checked L.C.R.C.'s #116, #29 and the K.C. Surveyor's records.

L.C.R.C. #2654

L.C.R.C. #5969

Remon. tag on E side p. pole S 05° W 42.37'  
Remon. tag on NW side p. pole N 50° E 73.00'  
Remon. tag on SW side 16" Pine N 35° W 47.10'  
On line with fence to S (m/l)  
On C/L E-W pavement

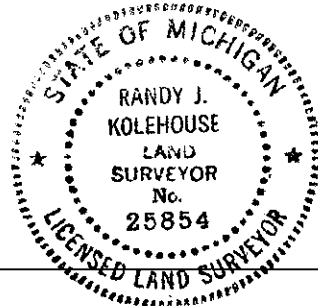
Nail & KC Remon. tag E. side P. Pole stump S 05° W 42.35'  
Nail & KC Remon. tag SW side 18" Pine N 35° W 47.13' (m. 47.18")  
Nail & KC Remon. tag SW side P. Pole S 70° E 107.82' (m. 106.72")  
Nail & KC Remon. tag NE (SE) side P. Pole N 45° E 70.34' (m. 70.27")  
SW cor. hse. fndn. N 65° E 114.84' (m. 114.71')

The selected location is accepted by me and is generally accepted by professional surveyors as the best available evidence of the position of the original corner.

C. Description of monument for corner and accessories established to perpetuate locating the position of the corner:

F-3 Standard Kent County Monument in a Monument Box

Nail & K.C. remon. tag on E side P. pole stump S 05° W 42.35'  
Nail & K.C. remon. tag on SW side 18" Pine N 35° W 47.18"  
Nail & K.C. remon. tag on SW side P. pole S 70° E 106.72'  
Nail & K.C. remon. tag on SE side P. pole N 45° E 70.27'  
SW cor. Fndn. N 65° E 114.71'



Signed by Randy J. Kolehouse  
EARTH TECH

Date 10/8/96

Surveyor's Michigan License No. 25854

P.A. 345 1990 KENT COUNTY

PEER APPROVED 7/25/96

CHAIRMAN [Signature]