

~~\$7.00~~
~~\$2.00~~
SURVEY &
REMONUMENTATION

FEB 14 1997

LAND CORNER RECORDATION CERTIFICATE
Filing Requirement of Act 74, Mich. P.A. 1970
KENT COUNTY REMONUMENTATION

For corners in COMMISSION

<u>Kent</u> (County)	Located in: Caledonia Township	Corner Code # <u>F-5</u>
1. Public Land Survey	T <u>5N</u> R <u>10W</u>	<u>F-5</u>
	T _____ R _____	_____
	T _____ R _____	_____
	T _____ R _____	_____
2. Property Controlling in Section	S _____ T _____ R _____	_____
	S _____ T _____ R _____	_____
3. Miscellaneous Property in Sec.	S _____ T _____ R _____	_____
	S _____ T _____ R _____	_____
4. Lot No. _____, Recorded Plat _____		
5. Private Claims _____		

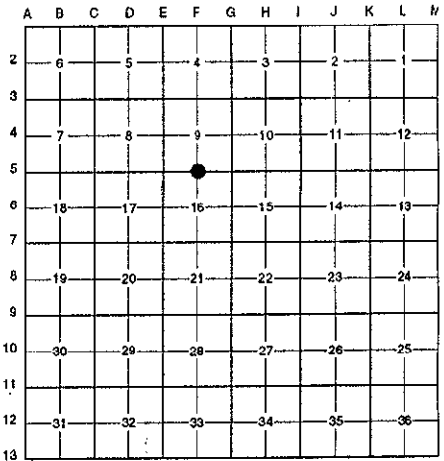
STATE OF MICHIGAN
COUNTY OF KENT
RECEIVED FOR RECORD

96 NOV -8 AM 9:20

REG. OF DEEDS
[Signature]
9492

Register of Deeds Stamp & File Number

I, Randy Kolehouse, in a field survey on May 2 19 96, do hereby certify that under requirements of P.A. 74 Michigan P.A. of 1970, the corner points mentioned in lines 1 and 2 above were in conformance with regulations and rules therefore as required in the current manual of survey instructions of the United States Department of the interior, Bureau of Land Management or by a decree of a Court of Law and/or that the corner points mentioned in lines 3, 4 and 5 above were in conformance with the rules of the Michigan Board of Land Surveyors or by a Decree of a Court of Law; established, re-established, monumented, re-monumented, recovered, found as expressed below:



NOTE: Not more than 4 corners, all in the same town and range, may be recorded on this certificate.

A. Description of original monument and accessories and/or subsequent restoration:

F-5	1831	G.L.O. Notes	Mullett	Set Post
	1960	Witness Map	K.C. Surveyor	Iron in Monument Box
	1972	L.C.R.C. #258	Exxel Engineering	1/2" Iron
	1973	L.C.R.C. #408	Medema, Van Kooten & Assoc.	3/4" Iron
	1976	L.C.R.C. #956	P. McPherson	1/2" Pipe
	1982	L.C.R.C. #2692	Jonker Land Survey	Fnd. 1/2" Iron / Set K.C. Monument / Set K.C. Mon.
	1991	L.C.R.C. #5970	William Byl	K.C. Monument

This corner was originally approved by the Kent County Remonumentation Peer Group and monumented by Rob Jonker on 3/16/82 and was recorded per L.C.R.C. #2692.

B. Description of corner evidence found and/or method applied in restoring or reestablishing corner:

F-5 Found a Standard Kent County Monument in the C/L of 76th Street (bit.) running East and West per L.C.R.C.'s #2692 and #5970 as set by Rob Jonker in place of a 1/2" iron at grade over a broken 4" x 24" concrete monument 18" below grade he found which checked L.C.R.C.'s #956, #408, and #258 and the K.C. Surveyor's records.

L.C.R.C. #2692

Remon. tag on SW side 9" Oak N 25° W 33.72'
Remon. tag on SE side 9" Oak N 50° E 47.00'
NE corner garage fnd. S 10° E 92.90'
NW corner hse. fnd. (#6800) S 35° W 104.10'
On C/L E-W pavement

L.C.R.C. #5970

Nail & KC Remon. tag SW side 12" Oak N 25° W 33.73'
Nail & KC Remon. tag SE side 12" Oak N 50° E 47.02'
NE cor. garage fnd. S 10° E 92.90'
NW cor. hse. fnd. (#6800) S 35° W 104.10'
Steel bar & cap (All Points) N 00° E 32.99'

The selected location is accepted by me and is generally accepted by professional surveyors as the best available evidence of the position of the original corner.

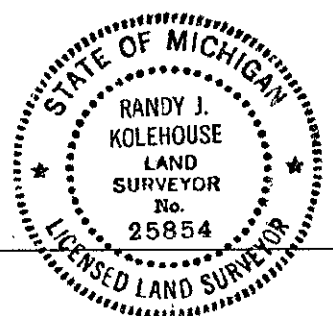
C. Description of monument for corner and accessories established to perpetuate locating the position of the corner:

F-5 Standard Kent County Monument

Nail & K.C. remon. tag on SW side 12" Oak N 25° W 33.73'
Nail & K.C. remon. tag on SE side 12" Oak N 50° E 47.02'
NE corner garage fndn. S 10° E 92.90'
NW corner hse. fndn. #6800 S 35° W 104.10'
Steel bar and cap (all points) N 00° E 32.99'

Signed by *Randy J. Kolehouse*
EARTH TECH

Date 10/8/96



Surveyor's Michigan License No. 25854

P.A. 345 1990 KENT COUNTY
PEER APPROVED 7/25/96
CHAIRMAN *Harold Hubert*