

SURVEY & REMONUMENTATION

FEB 14 1997

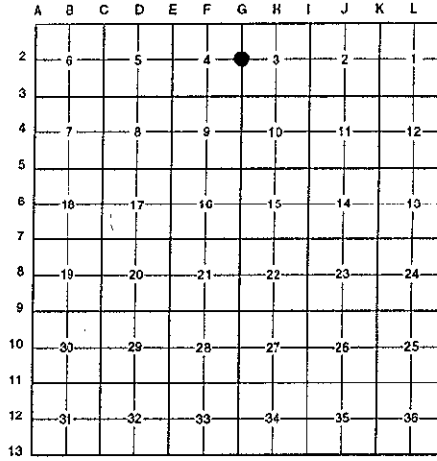
COMMISSION

LAND CORNER RECORDATION CERTIFICATE
Filing Requirement of Act 74, Mich. P.A. 1970
KENT COUNTY REMONUMENTATION

For corners in

<u>Kent</u> (County)	Located in: Caledonia Township	Corner Code #
1. Public Land Survey	T <u>5N</u> R <u>10W</u>	<u>G-2</u>
	T _____ R _____	_____
	T _____ R _____	_____
	T _____ R _____	_____
2. Property Controlling in Section	S _____ T _____ R _____	_____
	S _____ T _____ R _____	_____
3. Miscellaneous Property in Sec.	S _____ T _____ R _____	_____
	S _____ T _____ R _____	_____
4. Lot No. _____, Recorded Plat _____		
5. Private Claims _____		

STATE OF MICHIGAN
 COUNTY OF KENT
 RECEIVED FOR RECORD
 96 NOV -8 AM 9:20
 REG. OF DEEDS
 9498
 Register of Deeds Stamp & File Number



I, Randy Kolehouse, in a field survey on May 2 19 96, do hereby certify that under requirements of P.A. 74 Michigan P.A. of 1970, the corner points mentioned in lines 1 and 2 above were in conformance with regulations and rules therefore as required in the current manual of survey instructions of the United States Department of the interior, Bureau of Land Management or by a decree of a Court of Law and/or that the corner points mentioned in lines 3, 4 and 5 above were in conformance with the rules of the Michigan Board of Land Surveyors or by a Decree of a Court of Law; established, re-established, monumented, re-monumented, recovered, found as expressed below:

NOTE: Not more than 4 corners, all in the same town and range, may be recorded on this certificate.

A. Description of original monument and accessories and/or subsequent restoration:

G-2	1831	G.L.O. Notes	Mullett	Set Post
	N/A	Witness Map	K.C. Surveyor	3/4" Iron
	1971	L.C.R.C. #31	F. Spicer	3/4" Iron
	1982	L.C.R.C. #2656	Jonker Land Survey	Fnd. R.L.S. Cap #12579 in 3/4" Iron / Set K.C. Monument
	1991	L.C.R.C. #5975	William Byl	K.C. Monument

This corner was originally approved by the Kent County Remonumentation Peer Group and monumented by Rob Jonker on 2/10/82 and was recorded per L.C.R.C. #2656.

B. Description of corner evidence found and/or method applied in restoring or reestablishing corner:

G-2 Found a Standard Kent County Monument 60' ± South of power lines running East and West per L.C.R.C.'s #2656 and #5975 as set by Rob Jonker in place of a R.L.S. cap #12579 in a 3/4" iron at grade over a 3/4" iron 24" below grade which checked L.C.R.C. #31 and the K.C. Surveyor's records.

L.C.R.C. #2656

- Remon. tag on S side 9" Oak N 67° W 4.61'
- Remon. tag on SE side 8" Tw. Cedar N 32° E 25.8'
- Remon. tag on W side 30" Maple N 12° W 45.87'
- Remon. tag on E side 12" Hickory S 00° E 62.75'
- Iron by "T" fence post - East 14.65'

L.C.R.C. #5975

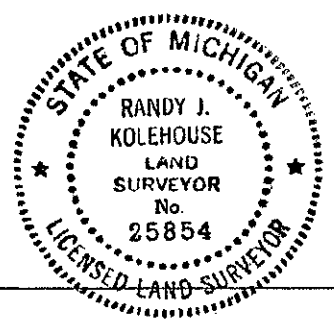
- Nail & KC Remon. tag S. side Tw. 10" Oak N 67° W 4.64'
- Nail & KC Remon. tag SE side 8" Tw. Cedar N 32° E 25.75'
- Nail & KC Remon. tag W. side 36" Maple N 12° W 45.84'
- Nail & KC Remon. tag E. side 12" Hickory S 00° E 62.80'
- Steel bar & cap (#12579) S 90° E 14.73'

The selected location is accepted by me and is generally accepted by professional surveyors as the best available evidence of the position of the original corner.

C. Description of monument for corner and accessories established to perpetuate locating the position of the corner:

G-2 Standard Kent County Monument

- Nail & K.C. remon. tag on S side 10" Tw. Oak N 67° W 4.64'
- Nail & K.C. remon. tag on SE side 8" Tw. Cedar N 32° E 25.75'
- Nail & K.C. remon. tag on W side 36" Maple N 12° W 45.84'
- Nail & K.C. remon. tag on E side 12" Hickory S 00° E 62.80'
- Steel bar/cap #12579 S 90° E 14.73'



Signed by Randy J. Kolehouse
 EARTH TECH

Date 10/8/96

Surveyor's Michigan License No. 25854

P.A. 345 1990 KENT COUNTY
 PEER APPROVED 7/29/96
 CHAIRMAN James Hubert