

SURVEY &
REMONUMENTATION

\$7.00
\$2.00

FEB 14 1997

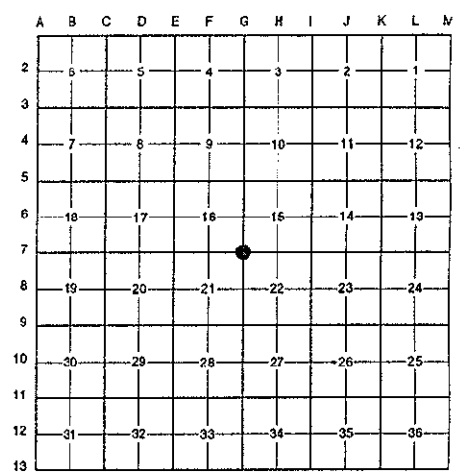
LAND CORNER RECORDATION CERTIFICATE
Filing Requirement of Act 74, Mich. P.A. 1970
KENT COUNTY REMONUMENTATION

For corners in

<u>Kent</u> (County)	Located in: Caledonia Township	Corner Code #
1. Public Land Survey	T <u>5N</u> R <u>10W</u>	<u>G-7</u>
	T _____ R _____	_____
	T _____ R _____	_____
	T _____ R _____	_____
2. Property Controlling in Section	S _____ T _____ R _____	_____
	S _____ T _____ R _____	_____
3. Miscellaneous Property in Sec.	S _____ T _____ R _____	_____
	S _____ T _____ R _____	_____
4. Lot No. _____, Recorded Plat _____		
5. Private Claims _____		

STATE OF MICHIGAN
COUNTY OF KENT
RECEIVED FOR RECORD
96 NOV - 8 AM 9:22
REG. OF DEEDS
9504
Register of Deeds Stamp & File Number

I, Randy Kolehouse, in a field survey on April 10 19 96, do hereby certify that under requirements of P.A. 74 Michigan P.A. of 1970, the corner points mentioned in lines 1 and 2 above were in conformance with regulations and rules therefore as required in the current manual of survey instructions of the United States Department of the interior, Bureau of Land Management or by a decree of a Court of Law and/or that the corner points mentioned in lines 3, 4 and 5 above were in conformance with the rules of the Michigan Board of Land Surveyors or by a Decree of a Court of Law; established, re-established, monumented, re-monumented, recovered, found as expressed below:



NOTE: Not more than 4 corners, all in the same town and range, may be recorded on this certificate.

A. Description of original monument and accessories and/or subsequent restoration:

G-7	1831	G.L.O. Notes	Mullett	Set Post
	1941-51	Witness Map	K.C. Surveyor	Iron in Monument Box
	1976	L.C.R.C. #955	P. McPherson	Boat Spike
	1982	L.C.R.C. #3073	Jonker Land Survey	Fnd. 1/2" Iron in Mon. Box / Set K.C. Monument in Mon. Box
	1991	L.C.R.C. #5978	William Byl	K.C. Monument in Mon. Box

This corner was originally approved by the Kent County Remonumentation Peer Group and monumented by Rob Jonker on 8/5/82 and was recorded per L.C.R.C. #3073.

B. Description of corner evidence found and/or method applied in restoring or reestablishing corner:

G-7 Found a Standard Kent County Monument 11.1' South of the C/L of 84th Street (bit.) running East and West and on the C/L of Thornapple River Drive running North per L.C.R.C.'s #3073 and #5978 as set by Rob Jonker in place of a 1/2" iron he found in a monument box which checked the K.C. Surveyor's records. The boat spike found in L.C.R.C. #955 was incorrectly recorded.

L.C.R.C. #3073

Remon. tag on SW side p. pole N 55° W 74.02'
Chisled "X" on E end culvert S 70° E 57.25'
SW cor. hse. fnd. N 40° E 67.8' (frame 67.55')
C/L gravel to S., East 17' m/l

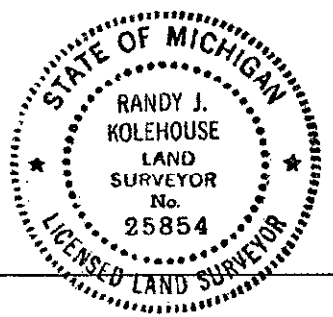
The selected location is accepted by me and is generally accepted by professional surveyors as the best available evidence of the position of the original corner.

C. Description of monument for corner and accessories established to perpetuate locating the position of the corner:

G-7 Standard Kent County Monument
Nail & K.C. remon. tag on SW side P. pole N 55° W 74.02'
Nail & K.C. remon. tag on NW side P. pole S 65° W 27.52'
"+" cut E end conc. culvert S 70° E 57.25'
NW cor. hse. (siding) S 35° E 130.03'
SW cor. hse. (siding) N 40° E 67.55'

Signed by Randy J. Kolehouse
EARTH TECH

Date 12/8/96



Surveyor's Michigan License No. 25854

P.A. 345 1990 KENT COUNTY
PEER APPROVED 7/25/96
CHAIRMAN [Signature]