

\$7.00  
\$2.00

FEB 14 1997

COMMISSION

**LAND CORNER RECORDATION CERTIFICATE**  
**Filing Requirement of Act 74, Mich. P.A. 1970**  
**KENT COUNTY REMONUMENTATION**

For corners in

<u>Kent</u> (County)	Located in: Caledonia Township	Corner Code #
1. Public Land Survey	T <u>5N</u> R <u>10W</u>	<u>G-8</u>
	T _____ R _____	_____
	T _____ R _____	_____
	T _____ R _____	_____
2. Property Controlling in Section	S _____ T _____ R _____	_____
	S _____ T _____ R _____	_____
3. Miscellaneous Property in Sec.	S _____ T _____ R _____	_____
	S _____ T _____ R _____	_____

REG. OF DEEDS

*Lucy Stoddard*

96 NOV -8 AM 9:22

STATE OF MICHIGAN  
 COUNTY OF KENT  
 RECEIVED FOR RECORD

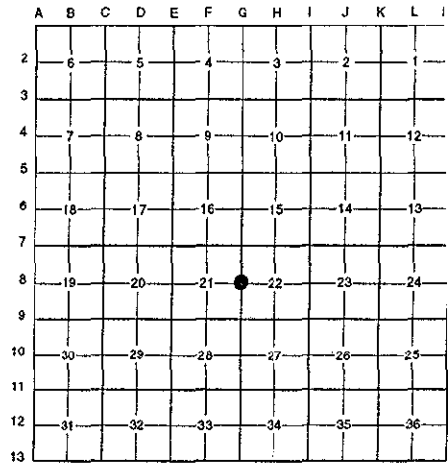
9505

Register of Deeds Stamp & File Number

4. Lot No. \_\_\_\_\_, Recorded Plat \_\_\_\_\_  
 5. Private Claims \_\_\_\_\_

I, Randy Kolehouse, in a field survey on April 9 19 96, do hereby certify that under requirements of P.A. 74 Michigan P.A. of 1970, the corner points mentioned in lines 1 and 2 above were in conformance with regulations and rules therefore as required in the current manual of survey instructions of the United States Department of the interior, Bureau of Land Management or by a decree of a Court of Law and/or that the corner points mentioned in lines 3, 4 and 5 above were in conformance with the rules of the Michigan Board of Land Surveyors or by a Decree of a Court of Law; established, re-established, monumented, re-monumented, recovered, found as expressed below:

**NOTE: Not more than 4 corners, all in the same town and range, may be recorded on this certificate.**



**A. Description of original monument and accessories and/or subsequent restoration:**

G-8	1831	G.L.O. Notes	Mullett	Set Post
	N/A	Witness Map	K.C. Surveyor	Iron
	1987	L.C.R.C. #4521	Exxel Engineering	Reestablished Corner / Set K.C. Monument

This corner was originally approved by the Kent County Remonumentation Peer Group and monumented by Exxel Engineering on 5/1/87 and was recorded per L.C.R.C. #4521.

**B. Description of corner evidence found and/or method applied in restoring or reestablishing corner:**

G-8 Found a Standard Kent County Monument per L.C.R.C. #4521 as set by Exxel Engineering after reestablishing position of corner using Exxel Engineering and Williams & Works information.

L.C.R.C. #4521

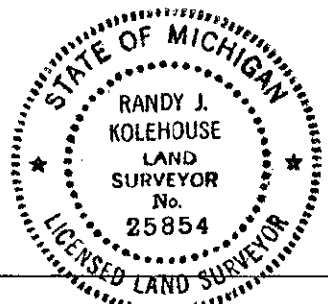
- Nail in W sde 14" Twin Maple S 22° 30' E 147.41'
- Nail in S'y sde triple 10" Maple S 88° 53' E 261.11'
- Nail in NW side 28" Maple N 73° 06' E 315.44'
- Nail in N sde 7" Oak N 87° 38' W 654.19'

The selected location is accepted by me and is generally accepted by professional surveyors as the best available evidence of the position of the original corner.

**C. Description of monument for corner and accessories established to perpetuate locating the position of the corner:**

G-8 Standard Kent County Monument

- Nail & K.C. remon. tag on W side 14" Twin Maple S 22° 30' E 147.41'
- Nail & K.C. remon. tag on in S'y side 10" Triple Maple S 88° 53' E 261.11'
- Nail & K.C. remon. tag on NW side 28" Maple N 73° 06' E 315.44'
- Nail & K.C. remon. tag on N side 7" Oak N 87° 38' W 654.19'



Signed by Randy J. Kolehouse  
 (EARTH TECH)

Date 10/8/96

Surveyor's Michigan License No. 25854

P.A. 345 1990 KENT COUNTY  
 PEER APPROVED 8/22/96  
 CHAIRMAN Harry Kupere