

SURVEY & REMONUMENTATION

\$7.00
\$2.00

FEB 14 1997

LAND CORNER RECORDATION CERTIFICATE

Filing Requirement of Act 74, Mich. P.A. 1970

COMMISSION

KENT COUNTY REMONUMENTATION

For corners in

<u>Kent</u> (County)	Located in: Caledonia Township	Corner Code #
1. Public Land Survey	T <u>5N</u> R <u>10W</u>	<u>G-10</u>
	T _____ R _____	_____
	T _____ R _____	_____
	T _____ R _____	_____
2. Property Controlling in Section	S _____ T _____ R _____	_____
	S _____ T _____ R _____	_____
3. Miscellaneous Property in Sec.	S _____ T _____ R _____	_____
	S _____ T _____ R _____	_____
4. Lot No. _____, Recorded Plat _____		
5. Private Claims _____		

STATE OF MICHIGAN
COUNTY OF KENT
RECEIVED FOR RECORD

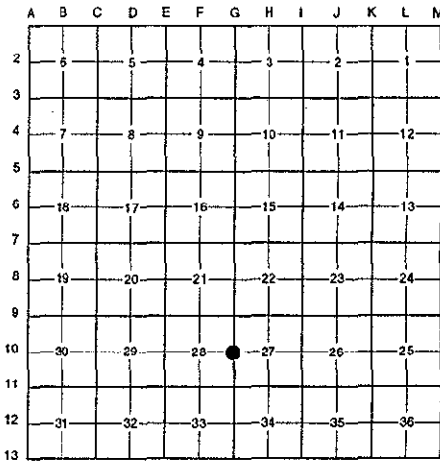
96 NOV -8 AM 9:22

REG. OF DEEDS
Randy J. Kolehuse
9506

Register of Deeds Stamp & File Number

I, Randy Kolehuse, in a field survey on March 29 19 96, do hereby certify that under requirements of P.A. 74 Michigan P.A. of 1970, the corner points mentioned in lines 1 and 2 above were in conformance with regulations and rules therefore as required in the current manual of survey instructions of the United States Department of the Interior, Bureau of Land Management or by a decree of a Court of Law and/or that the corner points mentioned in lines 3, 4 and 5 above were in conformance with the rules of the Michigan Board of Land Surveyors or by a Decree of a Court of Law; established, re-established, monumented, re-monumented, recovered, found as expressed below:

NOTE: Not more than 4 corners, all in the same town and range, may be recorded on this certificate.



A. Description of original monument and accessories and/or subsequent restoration:

G-10 1831	G.L.O. Notes	Mullett	Set Post
NA	Witness Map	K.C. Surveyor	Stone
1977	L.C.R.C. #977	Exxel Engineering	Stone
1982	L.C.R.C. #3031	Jonker Land Survey	Capped Rerod Over Stone
1991	L.C.R.C. #5979	William Byl	Capped Rerod Over Stone

This corner was originally approved by the Kent County Remonumentation Peer Group and monumented by Rob Jonker on 7/6/82 and was recorded per L.C.R.C. #3031.

B. Description of corner evidence found and/or method applied in restoring or reestablishing corner:

G-10 Found a capped rerod over a stone in the base of a 24" Maple 4' ± West of a fence row running North and South per L.C.R.C.'s #3031 and #5979 as reset by Rob which checked L.C.R.C. #977 and the K.C. Surveyor's records.

L.C.R.C. #3031

L.C.R.C. #5979

- | | |
|---|--|
| Remon. tag on NW side 10" Pignut N 40° E 13.24' | Nail & KC Remon. tag NW side 12" Pignut N 40° E 13.22' |
| Remon. tag on NE side 10" Pignut N 55° W 13.88' | Nail & KC Remon. tag NE side 12" Pignut N 55° W 13.95' (m. 14.16') |
| Remon. tag on N side 20" Maple N 90° E 1.7' | Nail & KC Remon. tag NW side 24" Maple N 45° E 1.61' |
| | Nail & KC Remon. tag S. side (6' High) 12" Pignut S 60° E 23.81' (m. 23.75') |

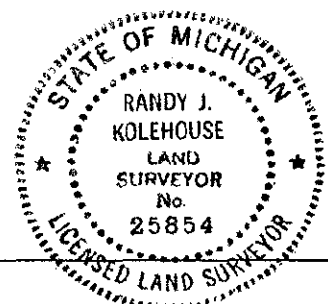
The selected location is accepted by me and is generally accepted by professional surveyors as the best available evidence of the position of the original corner.

C. Description of monument for corner and accessories established to perpetuate locating the position of the corner:

- G-10 Capped Rebar Over Stone in Base of 24" Maple
- Nail & K.C. remon. tag on NW side 12" Maple N 40° E 13.22'
 - Nail & K.C. remon. tag on NE side 12" Maple N 55° W 14.16'
 - Nail & K.C. remon. tag on NW side 24" Maple N 45° E 1.61'
 - Nail & K.C. remon. tag on S side (6' high) 12" Maple S 60° E 23.75'

Signed by *Randy J. Kolehuse*
EARTH TECH

Date 10/8/96



Surveyor's Michigan License No. 25854
P.A. 345 1990 KENT COUNTY

PEER APPROVED 1/25/96
CHAIRMAN *Harry Huber*