

\$7.00
\$2.00

FEB 14 1997

COMMISSION

LAND CORNER RECORDATION CERTIFICATE
Filing Requirement of Act 74, Mich. P.A. 1970
KENT COUNTY REMONUMENTATION

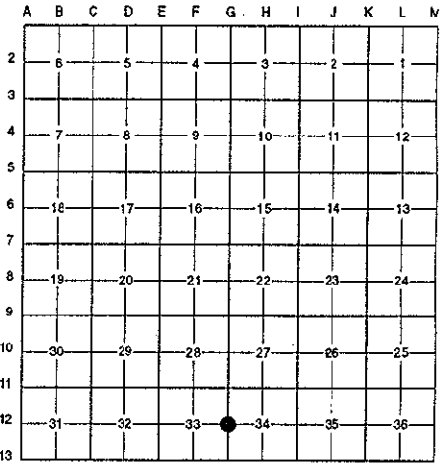
For corners in

<u>Kent</u> (County)	Located in: Caledonia Township	Corner Code #
1. Public Land Survey	T <u>5N</u> R <u>10W</u>	<u>G-12</u>
	T _____ R _____	_____
	T _____ R _____	_____
	T _____ R _____	_____
2. Property Controlling in Section	S _____ T _____ R _____	_____
	S _____ T _____ R _____	_____
3. Miscellaneous Property in Sec.	S _____ T _____ R _____	_____
	S _____ T _____ R _____	_____
4. Lot No. _____, Recorded Plat _____		
5. Private Claims _____		

STATE OF MICHIGAN
 COUNTY OF KENT
 RECEIVED FOR RECORD
 96 NOV -8 AM 9:22
 REG. OF DEEDS
Lucy Spauld
9508
 Register of Deeds Stamp & File Number

I, Randy Kolehouse, in a field survey on March 29 19 96, do hereby certify that under requirements of P.A. 74 Michigan P.A. of 1970, the corner points mentioned in lines 1 and 2 above were in conformance with regulations and rules therefore as required in the current manual of survey instructions of the United States Department of the interior, Bureau of Land Management or by a decree of a Court of Law and/or that the corner points mentioned in lines 3, 4 and 5 above were in conformance with the rules of the Michigan Board of Land Surveyors or by a Decree of a Court of Law; established, re-established, monumented, re-monumented, recovered, found as expressed below:

NOTE: Not more than 4 corners, all in the same town and range, may be recorded on this certificate.



A. Description of original monument and accessories and/or subsequent restoration:

G-12	1831	G.L.O. Notes	Mullett	Set Post
	1980	L.C.R.C. #3218	Exxel Engineering	Set Capped Iron
	1983	L.C.R.C. #3587	J. Bueche	Fnd. Excel Capped Iron / Set K.C. Monument
	1991	L.C.R.C. #5981	William Byl	K.C. Monument

This corner was originally approved by the Kent County Remonumentation Peer Group and monumented by J. Bueche on 10/4/96 and was recorded per L.C.R.C. #3587.

B. Description of corner evidence found and/or method applied in restoring or reestablishing corner:

G-12 Found a Standard Kent County Monument 10' ± South of power lines running East and West and 20 ± West on line of tree row running South per L.C.R.C.'s #3587 and #5981 as set by J. Bueche in place of a Exxel capped iron he found in a swamp which was set by Exxel Engineering per L.C.R.C. #3218.

L.C.R.C. #3587

- Spk. in W. side 34" Beech S 00° W 64.46'
- Spk. in E. side 20" Oak N 05° W 62.57'
- Spk. in SE side 18" Hickory N 40° E 83.64'
- C/L E - W power line is N. 2.2' ±

L.C.R.C. #5981

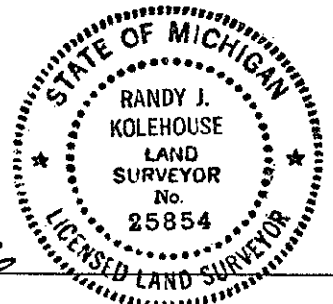
- KC Remon. tag & nail W. side 36" Beech S 10° W 64.46'
- KC Remon. tag & nail E. side 24" Oak N 05° W 62.57'
- KC Remon. tag & nail SE side 18" Hickory N 60° E 83.64'
- KC Remon. tag & nail W. side 24" Oak S 00° W 92.05'
- C/L Power Pole ##B 231 N 90° E 173' m/l
- C/L E-W power line is N. 2.2' m/l

The selected location is accepted by me and is generally accepted by professional surveyors as the best available evidence of the position of the original corner.

C. Description of monument for corner and accessories established to perpetuate locating the position of the corner:

G-12 Standard Kent County monument

- Nail & K.C. remon. tag on W side 36" Beech S 10° W 64.46'
- Nail & K.C. remon. tag on E side 24" Oak N 05° W 62.57'
- Nail & K.C. remon. tag on SE side 18" Hickory N 60° E 83.64'
- Nail & K.C. remon. tag on W side 24" Oak S 00° W 92.05'
- C/L P. pole #EB 231 N 90° E 173' m/l



Signed by Randy J. Kolehouse
 EARTH TECH

Date 10/8/96

Surveyor's Michigan License No. 25854

P.A. 345 1990 KENT COUNTY
 PEER APPROVED 7/25/96
 CHAIRMAN [Signature]