

Yes
SURVEY &
REMONUMENTATION

FEB 14 1997

LAND CORNER RECORDATION CERTIFICATE
Filing Requirement of Act 74, Mich. P.A. 1970
KENT COUNTY REMONUMENTATION

For corners in

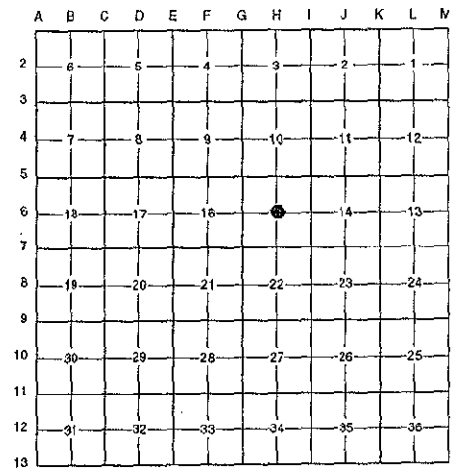
COMMISSION

For corners in	Located in:	Corner Code #
Kent (County)	Caledonia Township	
1. Public Land Survey	T <u>5N</u> R <u>10W</u>	<u>H-6</u>
	T _____ R _____	_____
	T _____ R _____	_____
	T _____ R _____	_____
2. Property Controlling in Section	S _____ T _____ R _____	_____
	S _____ T _____ R _____	_____
3. Miscellaneous Property in Sec.	S _____ T _____ R _____	_____
	S _____ T _____ R _____	_____

STATE OF MICHIGAN
COUNTY OF KENT
RECEIVED FOR RECORD
96 DEC 20 PM 12:42
REG. OF DEEDS
Lucy Bond
9612
Register of Deeds Stamp & File Number

4. Lot No. _____, Recorded Plat _____
5. Private Claims _____

I, Randy Kolehouse, in a field survey on March 26 19 96, do hereby certify that under requirements of P.A. 74 Michigan P.A. of 1970, the corner points mentioned in lines 1 and 2 above were in conformance with regulations and rules therefore as required in the current manual of survey instructions of the United States Department of the interior, Bureau of Land Management or by a decree of a Court of Law and/or that the corner points mentioned in lines 3, 4 and 5 above were in conformance with the rules of the Michigan Board of Land Surveyors or by a Decree of a Court of Law; established, re-established, monumented, re-monumented, recovered, found as expressed below:



NOTE: Not more than 4 corners, all in the same town and range, may be recorded on this certificate.

A. Description of original monument and accessories and/or subsequent restoration:

H-6 This corner was not originally set by the G.L.O.

1961	Witness Map	K.C. Surveyor	"T" Iron
1976	L.C.R.C. #955	P. McPherson	"T" Iron
1992	L.C.R.C. #6652	Exxel Engineering	Set Rebar with Exxel Cap

This corner was originally approved by the Kent County Remonumentation Peer Group and monumented by Exxel Engineering in 1992 and was recorded per L.C.R.C. #6652.

B. Description of corner evidence found and/or method applied in restoring or reestablishing corner:

H-6 Found a rebar with an Exxel cap 2' West of the C/L of Alaska Avenue (blacktop) running North and South on line of a chainlink fence running East and 30' West of a wooden fence running South per L.C.R.C.'s #6652 as set by Exxel Engineering in place of a "T" iron destroyed in 1991 which checked L.C.R.C. #955 and the K.C. Surveyor's records. Exxel rebar is 0.6' North and 0.3' West of the intersection of 1/4 lines. Accepted rebar as the Center of Section.

L.C.R.C. #6652

- Nail in N sde 14" Willow W-NW 59.95'
- Nail in N sde 12" Willow W-SW 60.79'
- Nail in NE sde P. Pole SE 75.48'
- Nail in NW sde P. Pole NE 122.15'
- Re-rod East 33.00'
- Capped C.P. Co. iron East 29.5'
- C/L blacktop West 2' ±

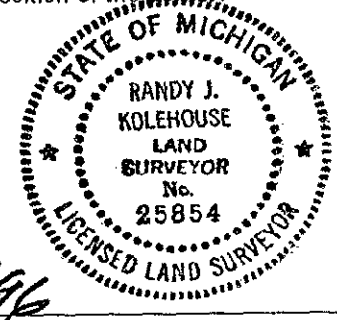
P.A. 345 1990 KENT COUNTY
PEER APPROVED 8/22/96
CHAIRMAN *Randy Kolehouse*

The selected location is accepted by me and is generally accepted by professional surveyors as the best available evidence of the position of the original corner.

C. Description of monument for corner and accessories established to perpetuate locating the position of the corner:

H-6 Set a Standard Kent County Monument

- Nail & K.C. remon. tag on S side 16" Willow N 80° W 59.70'
- Nail & K.C. remon. tag on N side 14" Willow S 80° W 60.70'
- Nail & K.C. remon. tag on NE side P. pole S 43° E 75.43'
- Nail & K.C. remon. tag on NW side P. pole N 25° E 122.20'
- Re-rod N 90° E 33.00'
- Capped C.P. Co. iron N 90° E 29.49'



Signed by *Randy J. Kolehouse* Date 12/4/96

Surveyor's Michigan License No. 25854