

SURVEY & REMONUMENTATION

\$7.00
\$2.00

FEB 14 1997

COMMISSION

LAND CORNER RECORDATION CERTIFICATE
Filing Requirement of Act 74, Mich. P.A. 1970
KENT COUNTY REMONUMENTATION

For corners in

Kent (County)	Located in: Caledonia Township	Corner Code #
1. Public Land Survey	T <u>5N</u> R <u>10W</u>	<u>H-9</u>
	T _____ R _____	_____
	T _____ R _____	_____
	T _____ R _____	_____
2. Property Controlling in Section	S _____ T _____ R _____	_____
	S _____ T _____ R _____	_____
3. Miscellaneous Property in Sec.	S _____ T _____ R _____	_____
	S _____ T _____ R _____	_____

REG. OF DEEDS

Lucy Bond

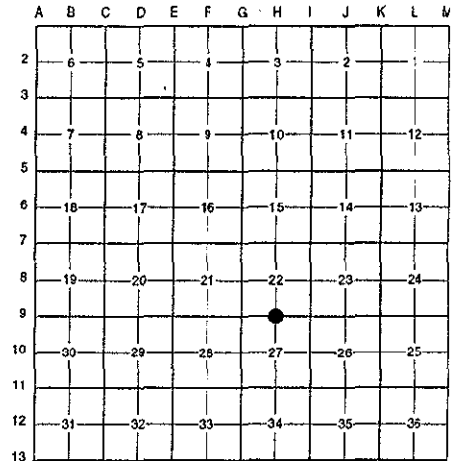
96 NOV -8 AM 9:22

STATE OF MICHIGAN
 COUNTY OF KENT
 RECEIVED FOR RECORD

9516

Register of Deeds Stamp & File Number

4. Lot No. _____, Recorded Plat _____
 5. Private Claims _____



I, Randy Kolehouse, in a field survey on March 26 19 96, do hereby certify that under requirements of P.A. 74 Michigan P.A. of 1970, the corner points mentioned in lines 1 and 2 above were in conformance with regulations and rules therefore as required in the current manual of survey instructions of the United States Department of the interior, Bureau of Land Management or by a decree of a Court of Law and/or that the corner points mentioned in lines 3, 4 and 5 above were in conformance with the rules of the Michigan Board of Land Surveyors or by a Decree of a Court of Law; established, re-established, monumented, re-monumented, recovered, found as expressed below:

NOTE: Not more than 4 corners, all in the same town and range, may be recorded on this certificate.

A. Description of original monument and accessories and/or subsequent restoration:

H-9	1831	G.L.O. Notes	Mullett	Set Post
	N/A	Witness Map	K.C. Surveyor	1" Iron
	1977	L.C.R.C. #977	Exxel Engineering	PK Nail
	1981	L.C.R.C. #2061	Nederveld & Jonker	Fnd. 1/2" Round Iron / Set K.C. Monument
	1995	L.C.R.C. #8109	K. Breitels	K.C. Monument

P.A. 3.5 1993 KENT COUNTY
 PEER APPROVED 7/25/96
 CHAIRMAN Randy Kolehouse

This corner was originally approved by the Kent County Remonumentation Peer Group and monumented by Nederveld & Jonker on 7/7/81 and was recorded per L.C.R.C. #2061.

B. Description of corner evidence found and/or method applied in restoring or reestablishing corner:

H-9 Found a Standard Kent County Monument 1' South and 1' East of the C/L intersection of 92nd Street (bit.) running East and Alaska Avenue (bit.) running North and South per L.C.R.C.'s #2061 and #8109 as set by Nederveld & Jonker in place of a 1/2" round iron they found which checked L.C.R.C. #977 and the K.C. Surveyor's records.

L.C.R.C. #2061

Nail & Remon. tag in W side P. pole N 16° W 98.36'
 Nail & Remon. tag in E side 16" Hickory S 12° E 172.43'
 Centerline "X" 1' North and 1' West

L.C.R.C. #8109

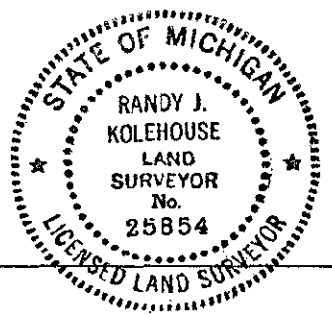
Nail & Remon. tag W. side P. Pole N 16° W 98.68' (m. 98.59')
 Nail & Remon. tag E. side 20" Hickory S 12° E 172.36' (172.28')
 Nail & KC Remon. tag side Power Pole N 15° E 96.99'
 Centerline "X" 1' North and 1' West

The selected location is accepted by me and is generally accepted by professional surveyors as the best available evidence of the position of the original corner.

C. Description of monument for corner and accessories established to perpetuate locating the position of the corner:

H-9 Standard Kent County Monument

Nail & K.C. remon. tag on W side P. pole N 16° W 98.59'
 Nail & K.C. remon. tag on E side 16" Hickory S 12° E 172.28'
 Nail & K.C. remon. tag on W side P. pole N 18° E 97.00'
 Nail & K.C. remon. tag on S side L. pole S 77° W 25.44'
 Nail & K.C. remon. tag on S side 8" Maple N. 77° E 89.85'



Signed by Randy J. Kolehouse

Date 10/8/96

Surveyor's Michigan License No. 25854