

REMONUMENTATION

FEB 14 1997

LAND CORNER RECORDATION CERTIFICATE

Filing Requirement of Act 74, Mich. P.A. 1970

KENT COUNTY REMONUMENTATION

For corners in

COMMISSION

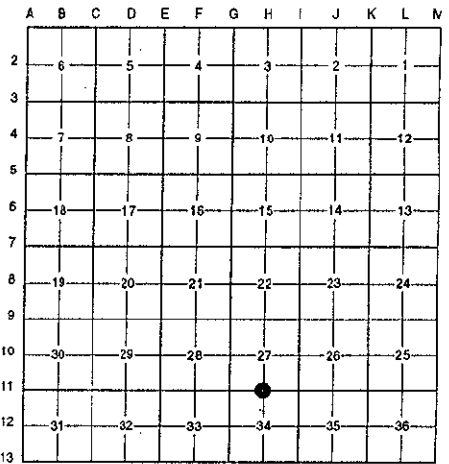
For corners in	Located in:	Corner Code #
Kent (County)	Caledonia Township	
1. Public Land Survey	T <u>5N</u> R <u>10W</u>	<u>H-11</u>
	T _____ R _____	_____
	T _____ R _____	_____
	T _____ R _____	_____
2. Property Controlling in Section	S _____ T _____ R _____	_____
	S _____ T _____ R _____	_____
3. Miscellaneous Property in Sec.	S _____ T _____ R _____	_____
	S _____ T _____ R _____	_____
4. Lot No. _____, Recorded Plat _____		
5. Private Claims _____		

STATE OF MICHIGAN
 COUNTY OF KENT
 RECEIVED FOR RECORD
 96 NOV -8 AM 9:22
 REG. OF DEEDS
 9518

Register of Deeds Stamp & File Number

I, Randy Kolehouse, in a field survey on April 9 19 96, do hereby certify that under requirements of P.A. 74-Michigan P.A. of 1970, the corner points mentioned in lines 1 and 2 above were in conformance with regulations and rules therefore as required in the current manual of survey instructions of the United States Department of the Interior, Bureau of Land Management or by a decree of a Court of Law and/or that the corner points mentioned in lines 3, 4 and 5 above were in conformance with the rules of the Michigan Board of Land Surveyors or by a Decree of a Court of Law; established, re-established, monumented, re-monumented, recovered, found as expressed below:

NOTE: Not more than 4 corners, all in the same town and range, may be recorded on this certificate.



P.A. 345 1990 KENT COUNTY
 PEER APPROVED 7/25/96
 CHAIRMAN [Signature]

A. Description of original monument and accessories and/or subsequent restoration:

Date	Description	Material	Notes
H-11 1831	G.L.O. Notes	Mullett	Set Post
N/A	Witness Map	K.C. Surveyor	Stone-Iron
1973	L.C.R.C. #588	F. Spicer	Iron
1982	L.C.R.C. #2605	J. Bueche	Fnd. 3/4" Iron on Top of Bt. Spk. / Set K.C. Monument
1995	L.C.R.C. #8110	K. Breitels	K.C. Monument

This corner was originally approved by the Kent County Remonumentation Peer Group and monumented by J. Bueche on 1/25/82 and was recorded per L.C.R.C. #2605.

B. Description of corner evidence found and/or method applied in restoring or reestablishing corner:

H-11 Found a Standard Kent County Monument in the C/L intersection of 100th Street (bit.) running East and West and Alaska Avenue running North and South per L.C.R.C.'s #2605 and #8110 as set by J. Bueche in place of a 3/4" x 18" iron on top of a boat spike he found which checked L.C.R.C. #588 and the K.C. Surveyor's records.

L.C.R.C. #2605

L.C.R.C. #8110

K. C. Remon. tag & nail in NW side Power pole S 20° W 102.32'
 K. C. Remon. tag & nail in E side dbl. 14" Maple N 35° W 92.94'
 K.C. Remon. tag & nail in NW side Power pole N 30° E 71.74'
 SE cor. hse. foundation N 55° W 122.76'
 On C/L blktp. N-S & E-W

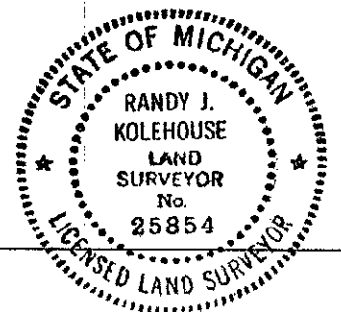
KC Remon. tag & Nail NW side Power Pole S 20° W 102.32'
 KC Remon. tag & Nail E. side dbl. 22" Maple N 35° W 92.81' (m. 92.94')
 KC Remon. tag & Nail NW side Power Pole N 30° E 71.80' (m. 71.74')
 SE corner house foundation N 55° W 122.86' (m. 122.76')

The selected location is accepted by me and is generally accepted by professional surveyors as the best available evidence of the position of the original corner.

C. Description of monument for corner and accessories established to perpetuate locating the position of the corner:

H-11 Standard Kent County Monument

Nail & K.C. remon. tag on NW side P. pole S 20° W 102.32'
 Nail & K.C. remon. tag on E side Dbl. 14" Maple N 35° W 92.94'
 Nail & K.C. remon. tag on NW side P. pole N 30° E 71.74'
 SE cor. hse. fndn. N 64° W 122.76'



Signed by [Signature]
 EARTH TECH

Date 10/8/96

Surveyor's Michigan License No. 25854