

SURVEY & REMONUMENTATION

STAMP
\$2.00

FEB 14 1997

COMMISSION

LAND CORNER RECORDATION CERTIFICATE
Filing Requirement of Act 74, Mich. P.A. 1970
KENT COUNTY REMONUMENTATION

For corners in

Kent (County)	Located in:	Caledonia Township	Corner Code #
1. Public Land Survey	T <u>5N</u>	R <u>10W</u>	<u>I-3</u>
	T _____	R _____	_____
	T _____	R _____	_____
	T _____	R _____	_____
2. Property Controlling in Section	S _____	T _____	R _____
	S _____	T _____	R _____
3. Miscellaneous Property in Sec.	S _____	T _____	R _____
	S _____	T _____	R _____

STATE OF MICHIGAN
 COUNTY OF KENT
 RECEIVED FOR RECORD
 96 NOV -8 AM 9:22
 REG. OF DEEDS
[Signature]

9523

Register of Deeds Stamp & File Number

4. Lot No. _____, Recorded Plat _____
 5. Private Claims _____

I, Randy Kolehouse, in a field survey on April 12 19 96, do hereby certify that under requirements of P.A. 74 Michigan P.A. of 1970, the corner points mentioned in lines 1 and 2 above were in conformance with regulations and rules therefore as required in the current manual of survey instructions of the United States Department of the interior, Bureau of Land Management or by a decree of a Court of Law and/or that the corner points mentioned in lines 3, 4 and 5 above were in conformance with the rules of the Michigan Board of Land Surveyors or by a Decree of a Court of Law; established, re-established, monumented, re-monumented, recovered, found as expressed below:

NOTE: Not more than 4 corners, all in the same town and range, may be recorded on this certificate.

A. Description of original monument and accessories and/or subsequent restoration:

I-3	1831	G.L.O. Notes	Mullett	Set Post
	1972	L.C.R.C. #163	Medema, Van Kooten & Assoc.	"T" Iron
	1972	L.C.R.C. #262	Medema, Van Kooten & Assoc.	"T" Iron
	1982	L.C.R.C. #2658	Jonker Land Survey	Fnd. "T" Iron / Set K.C. Monument
	1995	L.C.R.C. #8113	K. Breitels	K.C. Monument

This corner was originally approved by the Kent County Remonumentation Peer Group and monumented by Rob Jonker on 2/15/82 and was recorded per L.C.R.C. #2658.

B. Description of corner evidence found and/or method applied in restoring or reestablishing corner:

I-3 Found a Standard Kent County Monument 56' M/L North of the C/L of 68th Street (bit.) running East and West and 8' West of the C/L of Buttrick Avenue running North and South per L.C.R.C.'s #2658 and #8113 as set by Rob Jonker in place of a "T" iron he found 8' below grade in top of a 2" pipe 20" below grade which checked L.C.R.C.'s #262 and #163.

L.C.R.C. #2658

L.C.R.C. #8113

Remon. tag on W side p. pole N 33° E 43.01'
 Remon. tag on S side 24" Oak N 83° E 69.70'
 Remon. tag on W side p. pole S 15° E 82.90'
 C/L top conc. R.O.W. marker N 22° W 57.48'
 SE corner garage (brick) N 67° W 110.58'
 Chiseled "X" on top of curb S 30° W 11.51'
 Chiseled "X" on top of curb S 53° E 34.89'
 RR. spike in pvt. S'ly 55.55'

Nail & KC Remon. tag W. side P. Pole N 33° E 43.06'
 Nail & KC Remon. tag S. side 30" Oak N 83° E 69.62'
 Nail & KC Remon. tag W. side P. Pole S 15° E 82.96'
 SE corner garage (brick) N 67° W 110.588'
 Chiseled "X" on top of curb S 30° W 11.51'
 Chiseled "X" on top of curb S 53° E 34.96'

The selected location is accepted by me and is generally accepted by professional surveyors as the best available evidence of the position of the original corner.

C. Description of monument for corner and accessories established to perpetuate locating the position of the corner:

I-3 Standard Kent County Monument

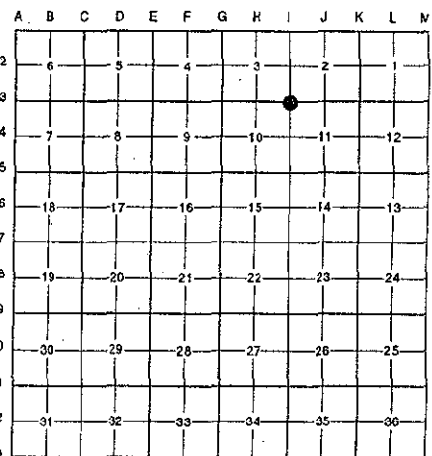
Nail & K.C. remon. tag on W side P. pole N 33° E 43.06'
 Nail & K.C. remon. tag on S side 30" Oak N 83° E 69.62'
 Nail & K.C. remon. tag on W side P. pole S 15° E 82.96'
 SE cor. garage (brick) N 67° W 110.58'

Chiseled "X" on top of curb S 30° W 11.51'
 Chiseled "X" on top of curb S 53° E 34.96'
 RR spike in pavement S'ly 55.55'

Signed by Randy J. Kolehouse
 EARTH TECH

Date 10/8/96

Surveyor's Michigan License No. 25854



P.A. 345 1990 KENT COUNTY
 PEER APPROVED 7/25/96
 CHAIRMAN *[Signature]*

