

ENGINEERING SURVEY & REMONUMENTATION

FEB 14 1997

LAND CORNER RECORDATION CERTIFICATE
Filing Requirement of Act 74, Mich. P.A. 1970
KENT COUNTY REMONUMENTATION

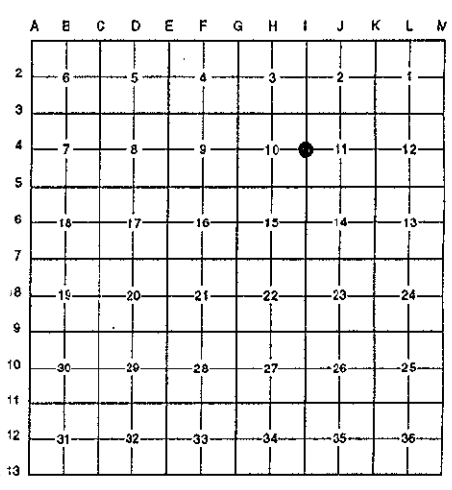
For corners in Kent (County) Located in: Caledonia Township Corner Code #

1. Public Land Survey	T <u>5N</u>	R <u>10W</u>	<u>I-4</u>
	T _____	R _____	_____
	T _____	R _____	_____
	T _____	R _____	_____
2. Property Controlling in Section	S _____	T _____	R _____
	S _____	T _____	R _____
3. Miscellaneous Property in Sec.	S _____	T _____	R _____
	S _____	T _____	R _____

4. Lot No. _____, Recorded Plat _____
5. Private Claims _____

STATE OF MICHIGAN
COUNTY OF KENT
RECEIVED FOR RECORD
96 NOV -8 AM 9:23
REG. OF DEEDS
Lucy Bond
9524
Register of Deeds Stamp & File Number

I, Randy Kolehouse, in a field survey on May 1 19 96, do hereby certify that under requirements of P.A. 74 Michigan P.A. of 1970, the corner points mentioned in lines 1 and 2 above were in conformance with regulations and rules therefore as required in the current manual of survey instructions of the United States Department of the interior, Bureau of Land Management or by a decree of a Court of Law and/or that the corner points mentioned in lines 3, 4 and 5 above were in conformance with the rules of the Michigan Board of Land Surveyors or by a Decree of a Court of Law; established, re-established, monumented, re-monumented, recovered, found as expressed below:



NOTE: Not more than 4 corners, all in the same town and range, may be recorded on this certificate.

A. Description of original monument and accessories and/or subsequent restoration:

1-4	1831	G.L.O. Notes	Mullett	Set Post
	1973	L.C.R.C. #490	F. Spicer	"T" Iron
	1974	L.C.R.C. #702	Exxel Engineering	"T" Iron
	1982	L.C.R.C. #2672	Jonker Land Survey	Fnd. "T" Iron / Set K.C. Monument
	1995	L.C.R.C. #8114	K. Breitels	K.C. Monument

P.A. 345 1990 KENT COUNTY
PEER APPROVED 8/22/96
CHAIRMAN *Randy Spitzer*

This corner was originally approved by the Kent County Remonumentation Peer Group and monumented by Rob Jonker on 3/1/82 and was recorded per L.C.R.C. #2672.

B. Description of corner evidence found and/or method applied in restoring or reestablishing corner:

1-4 Found a Standard Kent County Monument 1.0' North of fence line running East and West and 1.0' East of fence line running North and South per L.C.R.C.'s #2672 and #8114 as set by Rob Jonker in place of a "T" iron he found which checked L.C.R.C.'s #702 and #490 and the K.C. Surveyor's records.

L.C.R.C. #2672

Remon. tag on W side fence post N 1.49'
Remon. tag on S side 24" Oak S 88° W 46.89'

L.C.R.C. #8114

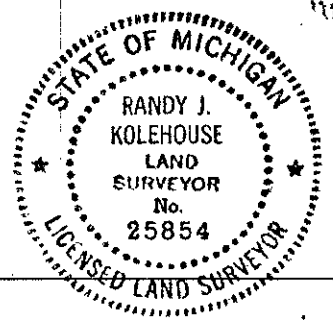
Nail & KC Remon. tag W side fence post N 00° E 1.49'
Nail & KC Remon. tag S side side fence post S 90° E 1.32'
Nail & KC Remon. tag S side 24" Oak stump S 88° W 46.89'
Nail & KC Remon. tag N side 18" Oak S 75° W 60.31'
Nail & KC Remon. tag W side 10" Oak N 40° W 40.84'
Nail & KC Remon. tag W side 12" Maple N 25° E 28.29'

The selected location is accepted by me and is generally accepted by professional surveyors as the best available evidence of the position of the original corner.

C. Description of monument for corner and accessories established to perpetuate locating the position of the corner:

1-4 Standard Kent County Monument

Nail & K.C. remon. tag on W side fence post N 00° E 1.49'
Nail & K.C. remon. tag on S side side fence post S 90° E 1.32'
Nail & K.C. remon. tag on S side 24" Oak stump S 88° W 46.89'
Nail & K.C. remon. tag on N side 18" Oak S 75° W 60.31'
Nail & K.C. remon. tag on W side 10" Oak N 40° W 40.84'
Nail & K.C. remon. tag on W side 12" Maple N 25° E 28.29'



Signed by *Randy J. Kolehouse*
BARTH TECH

Date 10/8/96

Surveyor's Michigan License No. 25854