

FEB 14 1997

COMMISSION

LAND CORNER RECORDATION CERTIFICATE
Filing Requirement of Act 74, Mich. P.A. 1970
KENT COUNTY REMONUMENTATION

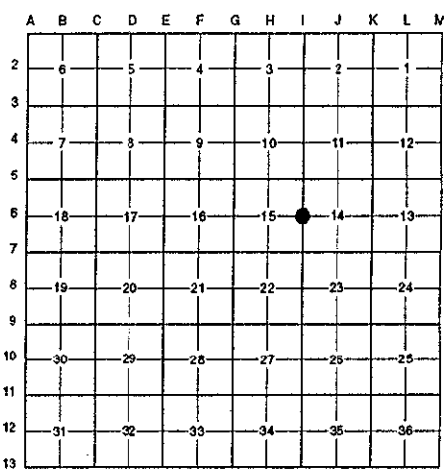
For corners in

Table with columns: Kent (County), Located in: Caledonia Township, Corner Code #. Rows include Public Land Survey, Property Controlling in Section, and Miscellaneous Property in Sec.

Register of Deeds Stamp & File Number. Includes date 96 NOV -8 AM 9:23, file number 9526, and signature of Randy J. Kolehouse.

4. Lot No. Recorded Plat
5. Private Claims

I, Randy Kolehouse, in a field survey on May 2 19 96, do hereby certify that under requirements of P.A. 74 Michigan P.A. of 1970, the corner points mentioned in lines 1 and 2 above were in conformance with regulations and rules therefore as required in the current manual of survey instructions of the United States Department of the interior, Bureau of Land Management or by a decree of a Court of Law and/or that the corner points mentioned in lines 3, 4 and 5 above were in conformance with the rules of the Michigan Board of Land Surveyors or by a Decree of a Court of Law; established, re-established, monumented, re-monumented, recovered, found as expressed below:



NOTE: Not more than 4 corners, all in the same town and range, may be recorded on this certificate.

A. Description of original monument and accessories and/or subsequent restoration:

Table listing survey details for corner I-6: 1831 G.L.O. Notes Mullet Set Post; 1961 Witness Map K.C. Surveyor Iron; 1976 L.C.R.C. #955 P. McPherson 'T' Iron; 1977 L.C.R.C. #1040 Exxel Engineering 'T' Iron; 1982 L.C.R.C. #2674 Jonker Land Survey Fnd. 'T' Iron / Set K.C. Monument; 1995 L.C.R.C. #8116 K. Breitels K.C. Monument

P.A. 345 1990 KENT COUNTY PEER APPROVED 8/22/96 CHAIRMAN Randy Kolehouse

This corner was originally approved by the Kent County Remonumentation Peer Group and monumented by Rob Jonker on 3/1/82 and was recorded per L.C.R.C. #2674.

B. Description of corner evidence found and/or method applied in restoring or reestablishing corner:

I-6 Found a Standard Kent County Monument 250' ± South of power lines running East and West on line of fence running South and West per L.C.R.C.'s #2674 and #8116 as set by Rob Jonker in place of a "T" iron he found which checked L.C.R.C.'s #1040 and #955 and the K.C. Surveyor's records.

L.C.R.C. #2674

L.C.R.C. #8116

Remon. tag on SE side 18" Oak S 45° W 35.94'
Remon. tag on W side 14" Oak S 15° E 42.65'
Remon. tag on N side 20" Oak N 90° W 26.65'
Remon. tag on E side 12" Oak N 05° E 26.78'
Remon. tag on S side 12" Maple clump S 70° E 58.68'
Face corner fence post NW 0.3'

Nail & KC Remon. tag SE side 22" Oak S 45° W 36.01'
Nail & KC Remon. tag W. side 20" Oak S 15° E 42.81'
Nail & KC Remon. tag N. side 26" Oak N 90° W 26.69'
Nail & KC Remon. tag E. side 18" Oak N 05° E 26.81'
Nail & KC Remon. tag S. side 20" Maple clump S 70° E 56.77'
At fence corner N-S-E-W

The selected location is accepted by me and is generally accepted by professional surveyors as the best available evidence of the position of the original corner.

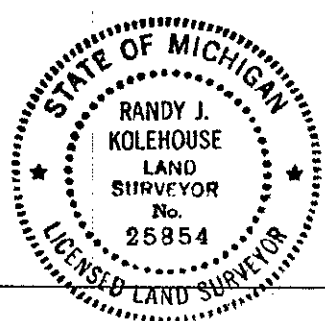
C. Description of monument for corner and accessories established to perpetuate locating the position of the corner.

I-6 Standard Kent County Monument

- Nail & K.C. remon. tag on SE side 22" Oak S 45° W 36.01'
Nail & K.C. remon. tag on W side 20" Oak S 15° E 42.81'
Nail & K.C. remon. tag on N side 26" Oak N 90° W 26.69'
Nail & K.C. remon. tag on E side 18" Oak N 05° E 26.81'
Nail & K.C. remon. tag on S side 20" Maple clump S 70° E 56.77'

Signed by Randy J. Kolehouse EARTH TECH

Date 10/8/96



Surveyor's Michigan License No. 25854