

SURVEY & REMONUMENTATION

\$7.00
\$2.00 FEB 14 1997

LAND CORNER RECORDATION CERTIFICATE
Filing Requirement of Act 74, Mich. P.A. 1970
KENT COUNTY REMONUMENTATION

For corners in **COMMISSION**

Kent (County)	Located in: Caledonia Township	Corner Code #
1. Public Land Survey	T <u>5N</u> R <u>10W</u>	<u>I-7</u>
	T _____ R _____	_____
	T _____ R _____	_____
	T _____ R _____	_____
2. Property Controlling in Section	S _____ T _____ R _____	_____
	S _____ T _____ R _____	_____
3. Miscellaneous Property in Sec.	S _____ T _____ R _____	_____
	S _____ T _____ R _____	_____

STATE OF MICHIGAN
COUNTY OF KENT
RECEIVED FOR RECORD

96 NOV -8 AM 9:23

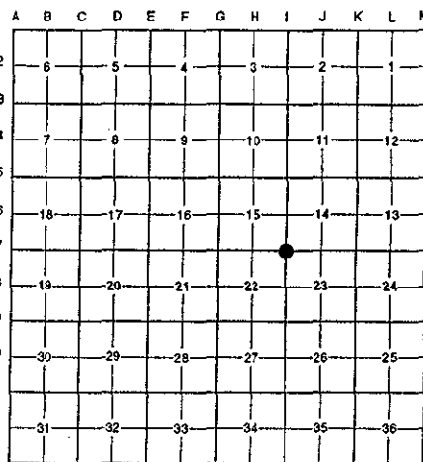
REG. OF DEEDS
[Signature]
9527

Register of Deeds Stamp & File Number

4. Lot No. _____, Recorded Plat _____
5. Private Claims _____

I, Randy Kolehouse, in a field survey on April 12 19 96, do hereby certify that under requirements of P.A. 74 Michigan P.A. of 1970, the corner points mentioned in lines 1 and 2 above were in conformance with regulations and rules therefore as required in the current manual of survey instructions of the United States Department of the interior, Bureau of Land Management or by a decree of a Court of Law and/or that the corner points mentioned in lines 3, 4 and 5 above were in conformance with the rules of the Michigan Board of Land Surveyors or by a Decree of a Court of Law; established, re-established, monumented, re-monumented, recovered, found as expressed below:

NOTE: Not more than 4 corners, all in the same town and range, may be recorded on this certificate.



A. Description of original monument and accessories and/or subsequent restoration:

Date	Description	Surveyor	Monument
1-7 1831	G.L.O. Notes	Mullett	Set Post
1961	Witness Map	K.C. Surveyor	Monument Box
1971	L.C.R.C. #7	Medema, Van Kooten & Assoc.	3/4" Iron in a Monument Box
1976	L.C.R.C. #955	P. McPherson	1/2" Pipe in Monument Box
1982	L.C.R.C. #2659	Jonker Land Surveys	Fnd. 1/2" Iron in Monument Box / Set K.C. Monument in Mon. Box
1995	L.C.R.C. #8117	K. Breitels	K.C. Monument

P.A. 345 1990 KENT COUNTY

PEER APPROVED 7/29/96

CHAIRMAN [Signature]

This corner was originally approved by the Kent County Remonumentation Peer Group and monumented by Rob Jonker on 2/15/82 and was recorded per L.C.R.C. #2659.

B. Description of corner evidence found and/or method applied in restoring or reestablishing corner:

1-7 Found a Standard Kent County Monument in the C/L of 84th Street (bit.) running East and West on line of a fence line running South per L.C.R.C.'s #2659 and #8117 as set by Rob Jonker in place of a 1/2" iron he found in a monument box over a 3/4" iron 24" below grade which checked L.C.R.C.'s #955 and #7 and the K.C. Surveyor's records.

L.C.R.C. #2659

L.C.R.C. #8117

Remon. tag on S side fence post N 55° W 57.25'
Remon. tag on E side p. pole S 05° W 29.60'
Remon. tag on E side p. pole N 02° E 81.50'
In line fence to South & edge woods to North
On C/L E-W pavement

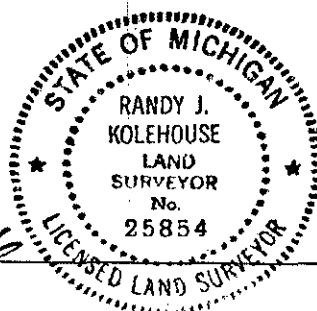
Nail & KC Remon. tag S. side fence post N 55° W 57.25'
Nail & KC Remon. tag E. side P. Pole S 05° W 29.68'
Nail & KC Remon. tag E. side P. Pole N 02° E 81.52'
Chiseled "X" top of curb S 60° W 61.83'
In line fence to South & edge woods to North

The selected location is accepted by me and is generally accepted by professional surveyors as the best available evidence of the position of the original corner.

C. Description of monument for corner and accessories established to perpetuate locating the position of the corner:

1-7 Standard Kent County Monument

Nail & K.C. remon. tag on S side fence post N 55° W 57.25'
Nail & K.C. remon. tag on E side P. pole S 05° W 29.68'
Nail & K.C. remon. tag on E side P. pole N 02° E 81.52'
Chiseled "X" top of West curb S 60° W 61.83'



Signed by Randy J. Kolehouse Date 10/8/96

EARTH TECH

Surveyor's Michigan License No. 25854