

SURVEY & REMONUMENTATION

FEB 14 1997

LAND CORNER RECORDATION CERTIFICATE
Filing Requirement of Act 74, Mich. P.A. 1970

KENT COUNTY REMONUMENTATION

For corners in

COMMISSION

Kent
(County)

Located in: Caledonia
Township

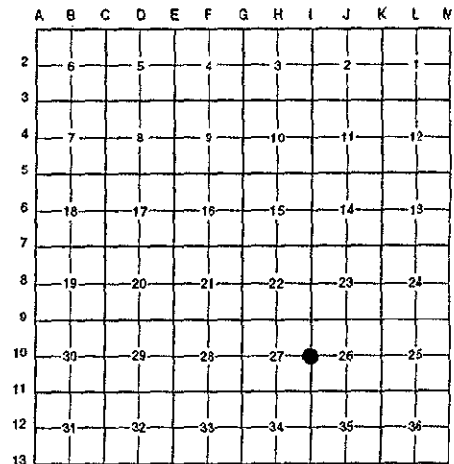
Corner Code #

- | | | | |
|------------------------------------|-------------|--------------|-------------|
| 1. Public Land Survey | T <u>5N</u> | R <u>10W</u> | <u>L-10</u> |
| | T _____ | R _____ | _____ |
| | T _____ | R _____ | _____ |
| | T _____ | R _____ | _____ |
| 2. Property Controlling in Section | S _____ | T _____ | R _____ |
| | S _____ | T _____ | R _____ |
| 3. Miscellaneous Property in Sec. | S _____ | T _____ | R _____ |
| | S _____ | T _____ | R _____ |

STATE OF MICHIGAN
 COUNTY OF KENT
 RECEIVED FOR RECORD
 96 NOV -8 AM 9:23
 REG. OF DEEDS
 9530
 Register of Deeds Stamp & File Number

4. Lot No. _____, Recorded Plat _____
 5. Private Claims _____

I, Randy Kolehouse, in a field survey on April 10 19 96, do hereby certify that under requirements of P.A. 74 Michigan P.A. of 1970, the corner points mentioned in lines 1 and 2 above were in conformance with regulations and rules therefore as required in the current manual of survey instructions of the United States Department of the interior, Bureau of Land Management or by a decree of a Court of Law and/or that the corner points mentioned in lines 3, 4 and 5 above were in conformance with the rules of the Michigan Board of Land Surveyors or by a Decree of a Court of Law; established, re-established, monumented, re-monumented, recovered, found as expressed below:



NOTE: Not more than 4 corners, all in the same town and range, may be recorded on this certificate.

A. Description of original monument and accessories and/or subsequent restoration:

I-10	1831	G.L.O. Notes	Mullett	Set Post
	N/A	Witness Map	K.C. Surveyor	Iron
	1972	L.C.R.C. #128	M. Chambers	3/4" Solid Iron
	1982	L.C.R.C. #2689	Jonker Land Survey	Fnd. 3/4" Iron / Set K.C. Monument
	1995	L.C.R.C. #8120	K. Breitels	K.C. Monument

P.A. 345 1900 KENT COUNTY
 PEER APPROVED 11/25/96
 CHAIRMAN Harry Tucker

This corner was originally approved by the Kent County Remonumentation Peer Group and monumented by Rob Jonker on 3/17/82 and was recorded per L.C.R.C. #2689.

B. Description of corner evidence found and/or method applied in restoring or reestablishing corner:

I-10 Found a Standard Kent County Monument 6' North of the C/L of 96th Street (gravel) running East and West and on the C/L of Sanborn Avenue (gravel) running North per L.C.R.C.'s #2689 and #8120 as set by Rob Jonker in place of a 3/4" solid iron (the end of an andiron buried upside down) he found which checked L.C.R.C. #128 and the K.C. Surveyor's records.

L.C.R.C. #2689

L.C.R.C. #8120

- Remon. tag on top corner fence post N 65° W 77.80'
- Remon. tag on E side corner fence post N 20° W 78.82'
- Remon. tag on E side p. pole S 28° E 77.40'
- Remon. tag on SE side 34" Maple N 47° E 38.84'
- Remon. tag on SE side tw. 14" Walnut S 62° W 56.76'

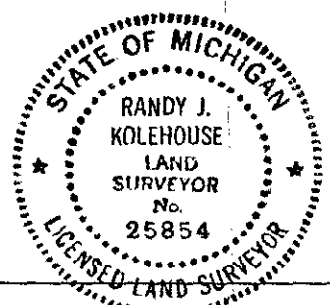
- Nail & KC Remon. tag on top corner fence post N 65° W 77.86' (m. 76.85')
- Nail & KC Remon. tag E. side corner fence post N 20° W 78.90'
- Nail & KC Remon. tag E. side P. Pole S 28° E 77.42' (m. 77.32')
- Nail & KC Remon. tag SE side 40" Oak N 47° E 38.96' (m. 38.91')
- Nail & KC Remon. tag SE side Tw. 18" Walnut S 62° W 56.69' (m. 56.59')

The selected location is accepted by me and is generally accepted by professional surveyors as the best available evidence of the position of the original corner.

C. Description of monument for corner and accessories established to perpetuate locating the position of the corner:

I-10 Standard Kent County Monument

- Nail & K.C. remon. tag on top corner fence post N 65° W 76.85'
- Nail & K.C. remon. tag on E side corner fence post N 20° W 78.90'
- Nail & K.C. remon. tag on E side P. pole S 28° E 77.32'
- Nail & K.C. remon. tag on SE side 40" Oak N 47° E 38.91'
- Nail & K.C. remon. tag on SE side Twin 18" Walnut S 62° W 56.59'
- NE corner concrete headwall N 13° E 58.39'



Signed by Randy J. Kolehouse
 EARTH TECH

Date 10/8/96

Surveyor's Michigan License No. 25854