

SURVEY &
REMONUMENTATION
\$2.00

FEB 14 1997

LAND CORNER RECORDATION CERTIFICATE
Filing Requirement of Act 74, Mich. P.A. 1970
KENT COUNTY REMONUMENTATION

For corners in

Kent COMMISSION
(County)

Located in: Caledonia
Township

Corner Code #

- | | | | | | |
|---------------------------------------|---|-----------|---|------------|-------------|
| 1. Public Land Survey | T | <u>5N</u> | R | <u>10W</u> | <u>I-11</u> |
| | T | _____ | R | _____ | _____ |
| | T | _____ | R | _____ | _____ |
| | T | _____ | R | _____ | _____ |
| 2. Property Controlling
in Section | S | _____ | T | _____ | _____ |
| | S | _____ | T | _____ | _____ |
| 3. Miscellaneous
Property in Sec. | S | _____ | T | _____ | _____ |
| | S | _____ | T | _____ | _____ |

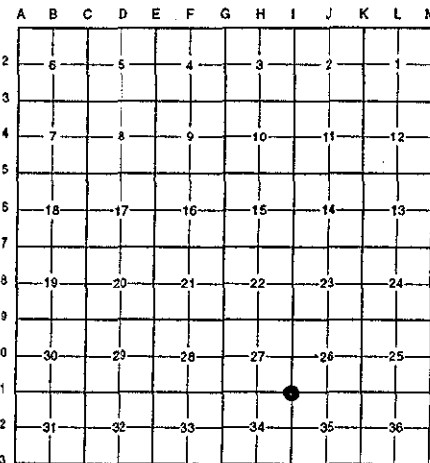
STATE OF MICHIGAN
COUNTY OF KENT
RECEIVED FOR RECORD
96 NOV -8 AM 9:23
REG. OF DEEDS
Lucy Spauld
9531

Register of Deeds Stamp & File Number

4. Lot No. _____, Recorded Plat _____
5. Private Claims _____

I, Randy Kolehouse, in a field survey on April 9 19 96, do hereby certify that under requirements of P.A. 74 Michigan P.A. of 1970, the corner points mentioned in lines 1 and 2 above were in conformance with regulations and rules therefore as required in the current manual of survey instructions of the United States Department of the interior, Bureau of Land Management or by a decree of a Court of Law and/or that the corner points mentioned in lines 3, 4 and 5 above were in conformance with the rules of the Michigan Board of Land Surveyors or by a Decree of a Court of Law; established, re-established, monumented, re-monumented, recovered, found as expressed below:

NOTE: Not more than 4 corners, all in the same town and range, may be recorded on this certificate.



A. Description of original monument and accessories and/or subsequent restoration:

I-11	1831	G.L.O. Notes	Mullett	Set Post	P.A. 345. 1990 KENT COUNTY.
	1965	Witness Map	K.C. Surveyor	3/4" Iron	PEER APPROVED 7/29/96
	1972	L.C.R.C. #128	M. Chambers	1-1/2" Iron	CHAIRMAN <i>Randy Kolehouse</i>
	1982	L.C.R.C. #2693	Jonker Land Survey	Fnd. 1-1/2" Crimped Iron / Set K.C. Monument	
	1995	L.C.R.C. #8121	K. Breitels	K.C. Monument	

This corner was originally approved by the Kent County Remonumentation Peer Group and monumented by Rob Jonker on 3/17/82 and was recorded per L.C.R.C. #2693.

B. Description of corner evidence found and/or method applied in restoring or reestablishing corner:

I-11 Found a Standard Kent County Monument 2' North of the C/L of 100th Street (bit.) running East and West per L.C.R.C.'s #2693 and #8121 as set by Rob Jonker in place of a 1-1/2" crimped iron he found which checked L.C.R.C. #128 and the K.C. Surveyor's records.

L.C.R.C. #2693

L.C.R.C. #8121

- Remon. tag on NE side t. pole N 50° W 73.23'
- Remon. tag on W side 18" Maple S 20° E 51.88'
- Remon. tag on E side 20" Maple S 10° W 60.10'
- Remon. tag on N side 16" Oak S 60° W 100.25'

- Nail & KC Remon. tag NE side T. Pole N 50° W 73.32'
- Nail & KC Remon. tag NW side 24" Maple N 50° E 76.77'
- Nail & KC Remon. tag W. side 24" Maple S 20° E 51.92'
- Nail & KC Remon. tag E. side 28" Maple S 10° W 60.12'
- Nail & KC Remon. tag N. side 24" Oak S 60° W 100.28'

The selected location is accepted by me and is generally accepted by professional surveyors as the best available evidence of the position of the original corner.

C. Description of monument for corner and accessories established to perpetuate locating the position of the corner:

I-11 Standard Kent County Monument

- Nail & K.C. remon. tag on NE side T. Pole N 50° W 73.32'
- Nail & K.C. remon. tag on NW side 24" Maple N 50° E 76.77'
- Nail & K.C. remon. tag on W side 24" Maple S 20° E 51.92'
- Nail & K.C. remon. tag on E side 28" Maple S 10° W 60.12'
- Nail & K.C. remon. tag on N side 24" Oak S 60° W 100.28'

Signed by *Randy J. Kolehouse*

Date 10/8/96

Surveyor's Michigan License No. 25854

