

**SURVEY &
REMONUMENTATION**

FEB 14 1997

COMMISSION

**LAND CORNER RECORDATION CERTIFICATE
Filing Requirement of Act 74, Mich. P.A. 1970
KENT COUNTY REMONUMENTATION**

For corners in

<u>Kent</u> (County)	Located in: <u>Caledonia</u> Township	Corner Code #	
1. Public Land Survey	T <u>5N</u> R <u>10W</u>	<u>J-5</u>	
	T _____ R _____	_____	
	T _____ R _____	_____	
	T _____ R _____	_____	
2. Property Controlling in Section	S _____ T _____ R _____	_____	
	S _____ T _____ R _____	_____	
3. Miscellaneous Property in Sec.	S _____ T _____ R _____	_____	
	S _____ T _____ R _____	_____	

4. Lot No. _____, Recorded Plat _____
5. Private Claims _____

STATE OF MICHIGAN
COUNTY OF KENT
RECEIVED FOR RECORD

96 NOV -8 AM 9:23

REG. OF DEEDS

Randy Kolehouse

9537

Register of Deeds Stamp & File Number

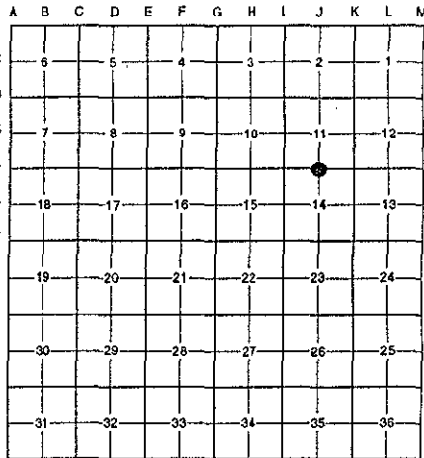
I, Randy Kolehouse, in a field survey on April 30 19 96, do hereby certify that under requirements of P.A. 74 Michigan P.A. of 1970, the corner points mentioned in lines 1 and 2 above were in conformance with regulations and rules therefore as required in the current manual of survey instructions of the United States Department of the interior, Bureau of Land Management or by a decree of a Court of Law and/or that the corner points mentioned in lines 3, 4 and 5 above were in conformance with the rules of the Michigan Board of Land Surveyors or by a Decree of a Court of Law; established, re-established, monumented, re-monumented, recovered, found as expressed below:

NOTE: Not more than 4 corners, all in the same town and range, may be recorded on this certificate.

A. Description of original monument and accessories and/or subsequent restoration:

J-5	1831	G.L.O. Notes	Mullett	Set Post
	1962	Witness Map	K.C. Surveyor	3/4" Iron
	1975	L.C.R.C. #900	F. Spicer	Set Concrete Spike from Previous Survey Data
	1984	L.C.R.C. #3841	R. Kolehouse	Fnd. Concrete Spike / Set K.C. Monument
	1995	L.C.R.C. #8126	K. Breitels	K.C. Monument

P.A. 345 1990 KENT COUNTY
PEER APPROVED 9/22/96
CHAIRMAN *Randy Kolehouse*



This corner was originally approved by the Kent County Remonumentation Peer Group and monumented by Randy Kolehouse on 3/31/84 and was recorded per L.C.R.C. #3841.

B. Description of corner evidence found and/or method applied in restoring or reestablishing corner:

J-5 Found a Standard Kent County Monument 8.0' North of the C/L of 76th Street running East and West on line of a tree running West per L.C.R.C.'s #3841 and #8126 as set by Randy Kolehouse in place of a concrete spike he found which checked L.C.R.C. #900 and the K.C. Surveyor's records.

L.C.R.C. #3841

- Nail & K.C. Remon. tag in NE side P. Pole S 40° E 115.18'
- Nail & K.C. Remon. tag in N side P. Pole N 85° W 52.58'
- Nail & K.C. Remon. tag in E side 8" Poplar N 30° W 81.50'
- Wly corner conc. R/W marker N 20° E 113.28'
- Wly corner conc. R/W marker N 80° E 119.13'
- Iron in Mon. Box South 8.2'

L.C.R.C. #8126

- Nail & KC Remon. tag NE side P. Pole S 40° E 115.10'
- Nail & KC Remon. tag N. side P. Pole N 85° W 52.68'
- Nail & KC Remon. tag E. side 15" Poplar N 30° W 81.50'
- Wly corner conc. R/W marker N 20° E 113.28'
- Wly corner conc. R/W marker N 80° E 119.13'
- Iron in mon. box - South 8.2'

The selected location is accepted by me and is generally accepted by professional surveyors as the best available evidence of the position of the original corner.

C. Description of monument for corner and accessories established to perpetuate locating the position of the corner:

J-5 Standard Kent County Monument

- Nail & K.C. remon. tag on NE side P. pole S 40° E 115.10'
- Nail & K.C. remon. tag on N side P. pole N 85° W 52.68'
- Nail & K.C. remon. tag on E side 15" Poplar N 30° W 81.50'
- Wly cor. conc. R/W marker N 20° E 113.28'
- Wly cor. conc. R/W marker N 80° E 119.13'

Signed by *Randy Kolehouse*

Date 10/8/96

Surveyor's Michigan License No. 25854

