

SURVEY & REMONUMENTATION

FEB 14 1997

LAND CORNER RECORDATION CERTIFICATE
Filing Requirement of Act 74, Mich. P.A. 1970
KENT COUNTY REMONUMENTATION

For corners in

Kent
(County)

COMMISSION

Located in: Caledonia
Township

Corner Code #

- | | | | |
|------------------------------------|-------------|--------------|------------|
| 1. Public Land Survey | T <u>5N</u> | R <u>10W</u> | <u>J-7</u> |
| | T _____ | R _____ | _____ |
| | T _____ | R _____ | _____ |
| | T _____ | R _____ | _____ |
| 2. Property Controlling in Section | S _____ | T _____ | R _____ |
| | S _____ | T _____ | R _____ |
| 3. Miscellaneous Property in Sec. | S _____ | T _____ | R _____ |
| | S _____ | T _____ | R _____ |

4. Lot No. _____, Recorded Plat _____
5. Private Claims _____

STATE OF MICHIGAN
COUNTY OF KENT
RECEIVED FOR RECORD

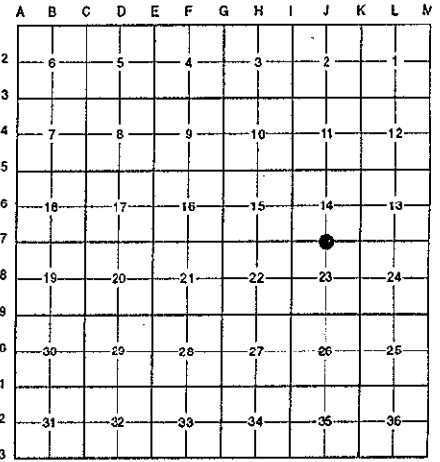
96 NOV -8 AM 9:23

REG. OF DEEDS
[Signature]
9539

Register of Deeds Stamp & File Number

I, Randy Kolehouse, in a field survey on April 8 19 96, do hereby certify that under requirements of P.A. 74 Michigan P.A. of 1970, the corner points mentioned in lines 1 and 2 above were in conformance with regulations and rules therefore as required in the current manual of survey instructions of the United States Department of the interior, Bureau of Land Management or by a decree of a Court of Law and/or that the corner points mentioned in lines 3, 4 and 5 above were in conformance with the rules of the Michigan Board of Land Surveyors or by a Decree of a Court of Law; established, re-established, monumented, re-monumented, recovered, found as expressed below:

NOTE: Not more than 4 corners, all in the same town and range, may be recorded on this certificate.



A. Description of original monument and accessories and/or subsequent restoration:

J-7	1831	G.L.O. Notes	Mullett	Set Post
	1963	Witness Map	K.C. Surveyor	1 1/2" Iron in Mon. Box
	1971	L.C.R.C. #7	Medema, Van Kooten & Assoc.	1 1/2" Iron in Monument Box
	1982	L.C.R.C. #2675	Jonker Land Survey	Fnd. Iron in Mon. Box / Set K.C. Monument in Mon. Box
	1995	L.C.R.C. #8127	K. Breitels	K.C. Monument

P.A. 345 1990 KENT COUNTY

PEER APPROVED 7/25/96
CHAIRMAN *[Signature]*

This corner was originally approved by the Kent County Remonumentation Peer Group and monumented by Rob Jonker on 2/25/82 and was recorded per L.C.R.C. #2675.

B. Description of corner evidence found and/or method applied in restoring or reestablishing corner:

J-7 Found a Standard Kent County Monument in the C/L intersection of 84th Street (bit.) running East and West and Whitneyville Avenue (bit.) running North and South per L.C.R.C.'s #2675 and #8127 as set by Rob Jonker in place of an iron he found in a monument box which checked L.C.R.C. #7 and the K.C. Surveyor's records.

L.C.R.C. #2675

L.C.R.C. #8127

C/L U.S.G.S. monument N 55° E 60.40'
Remon. tag on NE side p. pole N 45° W 60.28'
Remon. tag on SE side 36" Oak N 35° E 72.65'
Remon. tag on S side 36" Oak N 70° E 75.00'
Remon. tag on SW side p. pole S 38° E 94.75'
On C/L "X" pavement

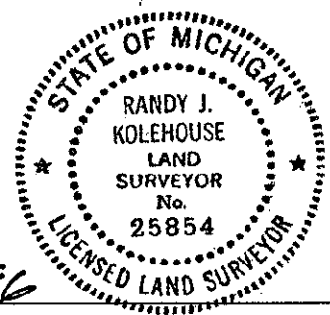
C/L USGS monument N 55° E 60.42' (m. 60.33')
Nail & KC Remon. tag NE side P. Pole N 45° W 59.23' (m. 59.19')
Nail & KC Remon. tag SE side 44" Oak N 35° E 72.67' (m. 72.56')
Nail & KC Remon. tag S. side 48" Oak N 70° E 74.94' (m. 74.87')
Nail & KC Remon. tag Sw side P. Pole S 38° E 94.80' (94.73')
On C/L "X" pavement

The selected location is accepted by me and is generally accepted by professional surveyors as the best available evidence of the position of the original corner.

C. Description of monument for corner and accessories established to perpetuate locating the position of the corner:

J-7 Standard Kent County Monument

C/L USGS Mon. N 55° E 60.33'
Nail & K.C. remon. tag on NE side P. pole N 45° W 59.19'
Nail & K.C. remon. tag on SE side 44" Oak N 35° E 72.56'
Nail & K.C. remon. tag on S side 48" Oak N 70° E 74.87'
Nail & K.C. remon. tag on SW side P. pole S 38° E 94.73'
C/L top end 12" conc. culv. S 47° W 50.07'



Signed by *[Signature]*
EARTH TECH

Date 10/8/96

Surveyor's Michigan License No. 25854