

FEB 14 1997

LAND CORNER RECORDATION CERTIFICATE
Filing Requirement of Act 74, Mich. P.A. 1970
KENT COUNTY REMONUMENTATION

For corners in COMMISSION

Kent (County)	Located in: Caledonia Township	Corner Code #
1. Public Land Survey	T <u>5N</u> R <u>10W</u>	<u>J-12</u>
	T _____ R _____	_____
	T _____ R _____	_____
	T _____ R _____	_____
2. Property Controlling in Section	S _____ T _____ R _____	_____
	S _____ T _____ R _____	_____
3. Miscellaneous Property in Sec.	S _____ T _____ R _____	_____
	S _____ T _____ R _____	_____

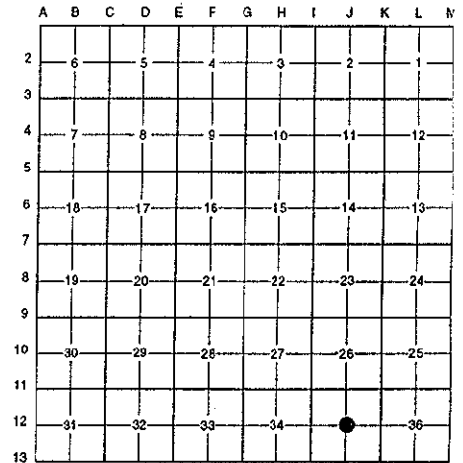
REG. OF DEEDS

9544

Register of Deeds Stamp & File Number

STATE OF MICHIGAN
COUNTY OF KENT
RECEIVED FOR RECORD
95 NOV -8 AM 9:23

4. Lot No. _____, Recorded Plat _____
5. Private Claims _____



I, Randy Kolehouse, in a field survey on April 8 19 96, do hereby certify that under requirements of P.A. 74 Michigan P.A. of 1970, the corner points mentioned in lines 1 and 2 above were in conformance with regulations and rules therefore as required in the current manual of survey instructions of the United States Department of the interior, Bureau of Land Management or by a decree of a Court of Law and/or that the corner points mentioned in lines 3, 4 and 5 above were in conformance with the rules of the Michigan Board of Land Surveyors or by a Decree of a Court of Law; established, re-established, monumented, re-monumented, recovered, found as expressed below:

NOTE: Not more than 4 corners, all in the same town and range, may be recorded on this certificate.

A. Description of original monument and accessories and/or subsequent restoration:

J-12 This corner was not originally set by the G.L.O.

N/A	Witness Map	K.C. Surveyor	Fence Post
1976	L.C.R.C. #954	Exxel Engineering	Set 1/2" Solid Rod

P.A. 345 1990 KENT COUNTY
PEER APPROVED 8/22/96
CHAIRMAN Randy Kolehouse

B. Description of corner evidence found and/or method applied in restoring or reestablishing corner:

J-12 Found a 1/2" rebar .5' South of a fence line running East and West and 4' South of the C/L of power lines per L.C.R.C.'s #954 and the K.C. Surveyor's records. Rebar is 0.2' East and 0.3' South of the intersection of 1/4 lines. Accepted rebar as the Center of Section.

L.C.R.C. #954

C/L 9" gravel Dr. (E-W) South 14.5'
E-W fence line North 0.5'
C/L E-W power line North 4' ±
362.5 feet East along power line to C/L Whitneyville Road

The selected location is accepted by me and is generally accepted by professional surveyors as the best available evidence of the position of the original corner.

C. Description of monument for corner and accessories established to perpetuate locating the position of the corner:

J-12 Replaced Rebar with a Standard Kent County Monument

- Nail & K.C. remon. tag on S side C.P. pole #246 N 90° W 209.97'
- Nail & K.C. remon. tag on N side 8" Pine S 06° W 38.81'
- Nail & K.C. remon. tag on NE side 6" Pine S 55° E 51.40'
- Nail & K.C. remon. tag on S side 6" Pine S 80° E 152.11'
- Nail & K.C. remon. tag on S side C.P. pole N 90° E 222.78'

Signed by Randy J. Kolehouse Date 10/8/96
EARTH TECH

Surveyor's Michigan License No. 25854

