

FEB 14 1997

LAND CORNER RECORDATION CERTIFICATE
Filing Requirement of Act 74, Mich. P.A. 1970
KENT COUNTY REMONUMENTATION

For corners in COMMISSION

Table with columns: Kent (County), Located in: Caledonia Township, Corner Code #. Rows include Public Land Survey, Property Controlling in Section, Miscellaneous Property in Sec., Lot No., and Private Claims.

Register of Deeds Stamp & File Number. Includes date 96 NOV -8 AM 9:23, handwritten signature, and file number 9547.

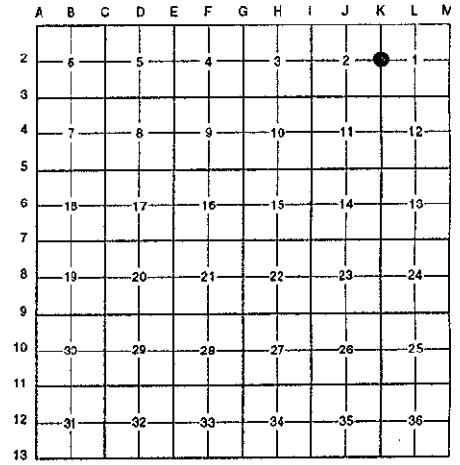
I, Randy Kolehouse, in a field survey on May 2, 1996, do hereby certify that under requirements of P.A. 74 Michigan P.A. of 1970, the corner points mentioned in lines 1 and 2 above were in conformance with regulations and rules therefore as required in the current manual of survey instructions of the United States Department of the interior, Bureau of Land Management or by a decree of a Court of Law and/or that the corner points mentioned in lines 3, 4 and 5 above were in conformance with the rules of the Michigan Board of Land Surveyors or by a Decree of a Court of Law; established, re-established, monumented, re-monumented, recovered, found as expressed below:

NOTE: Not more than 4 corners, all in the same town and range, may be recorded on this certificate.

A. Description of original monument and accessories and/or subsequent restoration:

Table with columns: K-2, 1831, G.L.O. Notes, Witness Map, L.C.R.C. #487, L.C.R.C. #2292, L.C.R.C. #8131, Mullett, K.C. Surveyor, F. Spicer, Nederveld Associates, K. Breitels, Set Post, Iron, 1" Iron, Fnd. 1" Iron / Set K.C. Monument, K.C. Monument.

P.A. 345 1990 KENT COUNTY PEER APPROVED 8/22/96 CHAIRMAN Randy Kolehouse



This corner was originally approved by the Kent County Remonumentation Peer Group and monumented by Nederveld Associates on 7/24/81 and was recorded per L.C.R.C. #2292.

B. Description of corner evidence found and/or method applied in restoring or reestablishing corner:

K-2 Found a Standard Kent County Monument on line of a fence row running North, South and West per L.C.R.C.'s #2292 and L.C.R.C. #8131 as set by Nederveld Associates in place of an iron theyfound which checked L.C.R.C. #487 and the K.C. Surveyor's records.

L.C.R.C. #2292

- Nail & K.C. Remon. tag N side 20" Twin Oak N 80° W 9.16'
Nail & K.C. Remon. tag W side 18" Oak N 15° W 57.45'
Nail & K.C. Remon. tag S side 12" Oak N 85° E 34.25'
Nail & K.C. Remon. tag N side 8" Oak S 40° W 23.11'

L.C.R.C. #8131

- Nail & KC Remon. tag N. side 26" Twin Oak N 80° W 9.18'
Nail & KC Remon. tag W. side 22" Oak N 15° W 57.48'
Nail & KC Remon. tag S. side 16" Oak N 85° E 34.27'
Nail & KC Remon. tag N. side 12" Oak S 40° W 23.22'

The selected location is accepted by me and is generally accepted by professional surveyors as the best available evidence of the position of the original corner.

C. Description of monument for corner and accessories established to perpetuate locating the position of the corner:

- K-2 Standard Kent County Monument
Nail & K.C. remon. tag on N side 26" Twin Oak N 80° W 9.18'
Nail & K.C. remon. tag on W side 22" Oak N 15° W 57.48'
Nail & K.C. remon. tag on S side 16" Oak N 85° E 34.27'
Nail & K.C. remon. tag on N side 12" Oak S 40° W 23.22'

Signed by Randy J. Kolehouse (EARTH TECH)

Date 10/8/96

Surveyor's Michigan License No. 25854

