

SURVEY & REMONUMENTATION

FEB 14 1997

COMMISSION

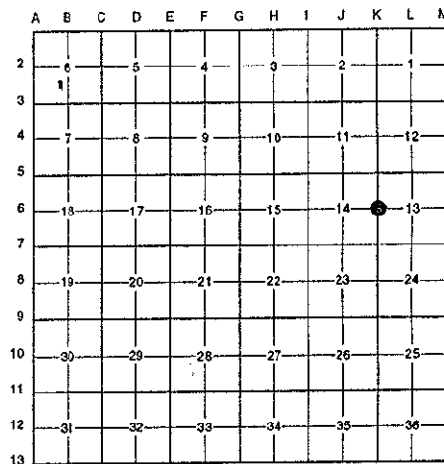
LAND CORNER RECORDATION CERTIFICATE
Filing Requirement of Act 74, Mich. P.A. 1970
KENT COUNTY REMONUMENTATION

For corners in

Kent (County)	Located in: Caledonia Township	Corner Code #
1. Public Land Survey	T <u>5N</u> R <u>10W</u>	<u>K-6</u>
	T _____ R _____	_____
	T _____ R _____	_____
	T _____ R _____	_____
2. Property Controlling in Section	S _____ T _____ R _____	_____
	S _____ T _____ R _____	_____
3. Miscellaneous Property in Sec.	S _____ T _____ R _____	_____
	S _____ T _____ R _____	_____
4. Lot No. _____, Recorded Plat _____		
5. Private Claims _____		

STATE OF MICHIGAN
 COUNTY OF KENT
 RECEIVED FOR RECORD
 96 NOV -8 AM 9:23
 REG. OF DEEDS
 9555
 Register of Deeds Stamp & File Number

I, Randy Kolehouse, in a field survey on May 1 19 96, do hereby certify that under requirements of P.A. 74 Michigan P.A. of 1970, the corner points mentioned in lines 1 and 2 above were in conformance with regulations and rules therefore as required in the current manual of survey instructions of the United States Department of the Interior, Bureau of Land Management or by a decree of a Court of Law and/or that the corner points mentioned in lines 3, 4 and 5 above were in conformance with the rules of the Michigan Board of Land Surveyors or by a Decree of a Court of Law; established, re-established, monumented, re-monumented, recovered, found as expressed below:



NOTE: Not more than 4 corners, all in the same town and range, may be recorded on this certificate.

A. Description of original monument and accessories and/or subsequent restoration:

K-6	1831	G.L.O. Notes	Mullett	Set Post
	1963	Witness Map	K.C. Surveyor	3/4" Iron
	1972	L.C.R.C. #149	Medema, Van Kooten & Assoc.	3/4" Iron
	1982	L.C.R.C. #2677	Jonker Land Survey	Fnd. 3/4" Round Iron / Set K.C. Monument
	1995	L.C.R.C. #8139	K. Breitels	K.C. Monument

P.A. 345 1990 KENT COUNTY
 PEER APPROVED 8/22/96
 CHAIRMAN Randy Kolehouse

This corner was originally approved by the Kent County Remonumentation Peer Group and monumented by Rob Jonker on 3/3/82 and was recorded per L.C.R.C. #2677.

B. Description of corner evidence found and/or method applied in restoring or reestablishing corner:

K-6 Found a Standard Kent County Monument 0.5' North of a fence line running East and West on line of a fence line running North and South per L.C.R.C.'s #2677 and #8139 as set by Rob Jonker in place of a 3/4" round iron he found which checked L.C.R.C. #149 and the K.C. Surveyor's records.

L.C.R.C. #2677

Remon. tag on W side 18" Ash N 10° W 5.25'
 Remon. tag on SW side 14" Oak N 45° W 10.46'
 Remon. tag on S side 6" Elm N 80° E 25.15'
 NW corner "I" beam gate post S 45° E 0.7'
 On line N-S fence & 0.5' N or E-W fence

L.C.R.C. #8139

Nail & KC Remon. tag W. side 24" Ash N 10° W 5.24'
 Nail & KC Remon. tag SW side 18" Oak N 45° W 10.29'
 Nail & KC Remon. tag S. side 10" Elm N 80° E 25.31'
 Nail & KC Remon. tag W. side 20" Elm S 20° W 19.24'
 NW cor. "I" beam gate post S 45° E 0.7' (m. 1.0')

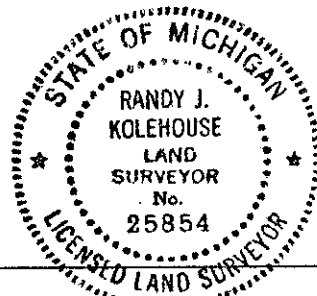
The selected location is accepted by me and is generally accepted by professional surveyors as the best available evidence of the position of the original corner.

C. Description of monument for corner and accessories established to perpetuate locating the position of the corner:

K-6 Standard Kent County Monument

Nail & K.C. remon. tag on W side 24" Ash N 10° W 5.24'
 Nail & K.C. remon. tag on SW side 18" Oak N 45° W 10.29'
 Nail & K.C. remon. tag on S side 10" Elm N 80° E 25.31'
 Nail & K.C. remon. tag on W side 20" Elm S 20° W 19.24'
 NW cor. "I" beam gate post S 45° E 1.0'

Signed by Randy J. Kolehouse Date 10/8/96



Surveyor's Michigan License No. 25854