

FEB 14 1997

COMMISSION

LAND CORNER RECORDATION CERTIFICATE
Filing Requirement of Act 74, Mich. P.A. 1970
KENT COUNTY REMONUMENTATION

For corners in

Table with columns: Kent (County), Located in: Caledonia Township, Corner Code #. Rows include Public Land Survey, Property Controlling in Section, and Miscellaneous Property in Sec.

STATE OF MICHIGAN
COUNTY OF KENT
RECEIVED FOR RECORD
96 NOV -8 AM 9:23
REG. OF DEEDS

9557

Register of Deeds Stamp & File Number

4. Lot No. , Recorded Plat
5. Private Claims

I, Randy Kolehouse, in a field survey on September 2, 1996, do hereby certify that under requirements of P.A. 74 Michigan P.A. of 1970, the corner points mentioned in lines 1 and 2 above were in conformance with regulations and rules therefore as required in the current manual of survey instructions of the United States Department of the interior, Bureau of Land Management or by a decree of a Court of Law and/or that the corner points mentioned in lines 3, 4 and 5 above were in conformance with the rules of the Michigan Board of Land Surveyors or by a Decree of a Court of Law; established, re-established, monumented, re-monumented, recovered, found as expressed below:

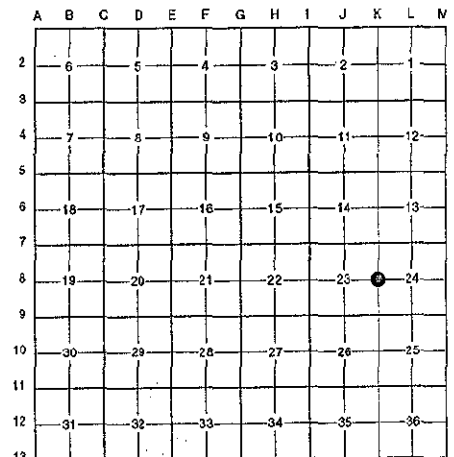
NOTE: Not more than 4 corners, all in the same town and range, may be recorded on this certificate.

A. Description of original monument and accessories and/or subsequent restoration:

Table with columns: K-8, Date (1831, 1980, 1982, 1995), Description (G.L.O. Notes, L.C.R.C. #1362, #2678, #8141), Name (Mullett, J. Merdzinski, Jonker Land Surveys, K. Breitels)

Set Post PEER APPROVED 10/24/96
" T " Iron CHAIRMAN
Fnd. " T " Iron / Set K.C. Monument in Swamp
K.C. Monument in Swamp

P.A. 345 1990 KENT COUNTY



This corner was originally approved by the Kent County Remonumentation Peer Group and monumented by Rob Jonker on 3/3/82 and was recorded per L.C.R.C. #2678.

B. Description of corner evidence found and/or method applied in restoring or reestablishing corner:

K-8 Found a Standard Kent County Monument in a swamp in line m/l with extension of old tree and fence running East per L.C.R.C.'s #2678 and #8141 as set by Rob Jonker in place of a " T " iron he found in a swamp which checked L.C.R.C. #1362.

L.C.R.C. #2678

L.C.R.C. #8141

Remon. tag on N side 4" Ash N 80° E 23.05'
Remon. tag on E side 8" Oak S 05° E 30.88'
Remon. tag on S side 8" Ash N 70° E 35.04'
Remon. tag on S side 10" Ash S 75° W 9.4'
Toe of steep slope is East 250' m/l
In line M/L with extension of old tree & fence from the East

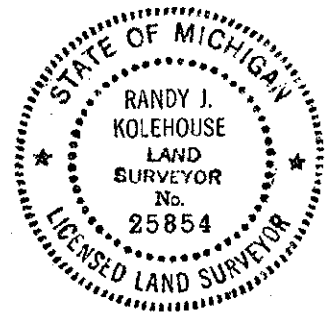
Nail & KC Remon. tag N. side 6" Elm N 80° E 23.04'
Nail & KC Remon. tag E. side 10" Oak S 05° E 30.86'
Nail & KC Remon. tag S. side 15" Ash N 70° E 35.02'
Nail & KC Remon. tag S. side 14" Ash S 75° W 9.41'
Nail & KC Remon. tag NE side 15" Oak S 40° E 47.74'
Nail & KC Remon. tag W. side 12" Maple N 00° E 24.68'
Toe of slope is East 250' m/l
In line m/l extension of old tree and fence from E.

The selected location is accepted by me and is generally accepted by professional surveyors as the best available evidence of the position of the original corner.

C. Description of monument for corner and accessories established to perpetuate locating the position of the corner:

K-8 Standard Kent County Monument in a Swamp

Nail & K.C. remon. tag on N side 6" Elm N 80° E 23.04'
Nail & K.C. remon. tag on E side 10" Oak S 05° E 30.86'
Nail & K.C. remon. tag on S side 15" Ash N 70° E 35.02'
Nail & K.C. remon. tag on S side 14" Ash S 75° W 9.41'
Nail & K.C. remon. tag on NE side 15" Oak S 40° E 47.74'
Nail & K.C. remon. tag on W side 12" Maple N 00° E 24.68'
Toe of slope is East 250' m/l
In line m/l with extension of old tree and fence from East



Signed by Randy J. Kolehouse
EARTH TECH

Date 10/25/96

Surveyor's Michigan License No. 25854