

LAND SURVEY & REMONUMENTATION

\$7.00
\$2.00

FEB 14 1997

LAND CORNER RECORDATION CERTIFICATE
Filing Requirement of Act 74, Mich. P.A. 1970
KENT COUNTY REMONUMENTATION

For corners in COMMISSION

<u>Kent</u> (County)	Located in: Caledonia Township	Corner Code #
1. Public Land Survey	T <u>5N</u> R <u>10W</u>	<u>K-10</u>
	T _____ R _____	_____
	T _____ R _____	_____
	T _____ R _____	_____
2. Property Controlling in Section	S _____ T _____ R _____	_____
	S _____ T _____ R _____	_____
3. Miscellaneous Property in Sec.	S _____ T _____ R _____	_____
	S _____ T _____ R _____	_____

STATE OF MICHIGAN
COUNTY OF KENT
RECEIVED FOR RECORD

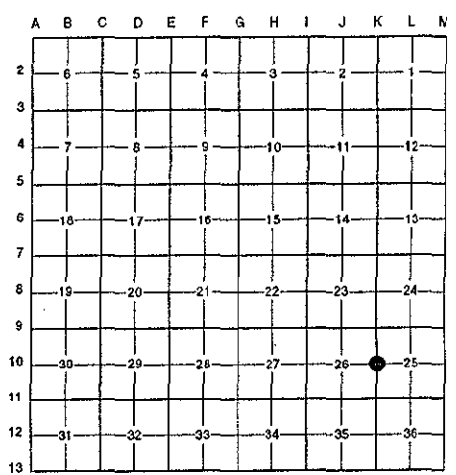
96 NOV -8 AM 9:23

REG. OF DEEDS
9559

Register of Deeds Stamp & File Number

4. Lot No. _____, Recorded Plat _____
5. Private Claims _____

I, Randy Kolehouse, in a field survey on May 1 19 96, do hereby certify that under requirements of P.A. 74 Michigan P.A. of 1970, the corner points mentioned in lines 1 and 2 above were in conformance with regulations and rules therefore as required in the current manual of survey instructions of the United States Department of the interior, Bureau of Land Management or by a decree of a Court of Law and/or that the corner points mentioned in lines 3, 4 and 5 above were in conformance with the rules of the Michigan Board of Land Surveyors or by a Decree of a Court of Law; established, re-established, monumented, re-monumented, recovered, found as expressed below:



NOTE: Not more than 4 corners, all in the same town and range, may be recorded on this certificate.

A. Description of original monument and accessories and/or subsequent restoration:

K-10	1831	G.L.O. Notes	Mullett	Set Post
	1960	Notes	Williams & Works	Stone
	1981	L.C.R.C. #2353	Exxel Engineering	Capped Iron
	1982	L.C.R.C. #2859	Jonker Land Survey	Fnd. Capped Rerod / Set K.C. Monument
	1995	L.C.R.C. #8143	K. Breitels	K.C. Monument

P.A. 345 1990 KENT COUNTY
PEER APPROVED: 8/22/96
CHAIRMAN Randy Kolehouse

This corner was originally approved by the Kent County Remonumentation Peer Group and monumented by Rob Jonker on 5/11/82 and was recorded per L.C.R.C. #2859.

B. Description of corner evidence found and/or method applied in restoring or reestablishing corner:

K-10 Found a Standard Kent County Monument on line of old tree row running South per L.C.R.C.'s #2859 and #8143 as set by Rob Jonker in place of a capped rerod he found which checked L.C.R.C. #213 and the 1960 notes of Williams & Works.

L.C.R.C. #2859

- Remon. tag on E side 9" Maple N 10° W 106.14'
- Remon. tag on NW side 10" Tw. Oak S 30° W 71.42'
- Remon. tag on W side 16" Oak S 00° E 94.70'
- Remon. tag on S side 10" Maple S 70° E 150.91'
- West edge of 100' x 50' pond on golf course is East 9' m/l
- In line of old tree row to S.

L.C.R.C. #8143

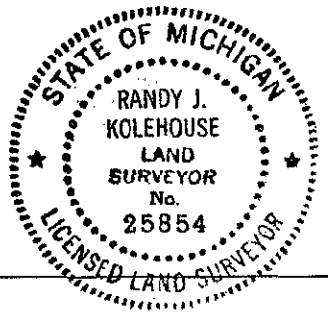
- Nail & KC Remon. tag E. side cluster 6"-18" Maples N 10° W 105.99'
- Nail & KC Remon. tag NW side 18" Tw. Oak S 30° W 71.48'
- Nail & KC Remon. tag W. side 20" Oak S 00° E 94.67'
- Nail & KC Remon. tag S. side 12" Maple S 70° E 151.03'
- Nail & KC Remon. tag S. side 12" Elm S 75° W 23.70'
- W. edge of 100' x 50' golf course pond is E. 9' m/l
- In line old tree row S.

The selected location is accepted by me and is generally accepted by professional surveyors as the best available evidence of the position of the original corner.

C. Description of monument for corner and accessories established to perpetuate locating the position of the corner:

K-10 Standard Kent County Monument

- Nail & K.C. remon. tag on E side 8"-20" Maple Cluster N 10° W 105.99'
- Nail & K.C. remon. tag on NW side 18" Tw. Oak S 30° W 71.48'
- Nail & K.C. remon. tag on W side 20" Oak S 00° E 94.67'
- Nail & K.C. remon. tag on S side 12" Maple S 70° E 151.03'
- Nail & K.C. remon. tag on S side 12" Elm S 75° W 23.70'



Signed by Randy J. Kolehouse
EARTH TECH

Date 10/9/94

Surveyor's Michigan License No. 25854