

FEB 14 1997

COMMISSION

**LAND CORNER RECORDATION CERTIFICATE**  
**Filing Requirement of Act 74, Mich. P.A. 1970**  
**KENT COUNTY REMONUMENTATION**

For corners in

<u>Kent</u> (County)	Located in: Caledonia Township	Corner Code #
1. Public Land Survey	T <u>5N</u> R <u>10W</u>	<u>K-11</u>
	T _____ R _____	_____
	T _____ R _____	_____
	T _____ R _____	_____
2. Property Controlling in Section	S _____ T _____ R _____	_____
	S _____ T _____ R _____	_____
3. Miscellaneous Property in Sec.	S _____ T _____ R _____	_____
	S _____ T _____ R _____	_____

STATE OF MICHIGAN  
 COUNTY OF KENT  
 RECEIVED FOR RECORD

96 NOV -8 AM 9:26

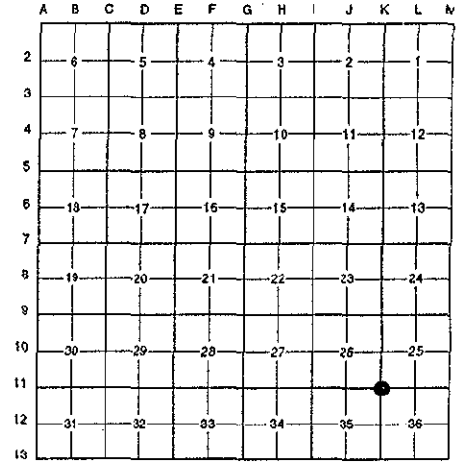
REG. OF DEEDS  
 9560

Register of Deeds Stamp & File Number

4. Lot No. \_\_\_\_\_, Recorded Plat \_\_\_\_\_
5. Private Claims \_\_\_\_\_

I, Randy Kolehouse, in a field survey on April 9 19 96, do hereby certify that under requirements of P.A. 74 Michigan P.A. of 1970, the corner points mentioned in lines 1 and 2 above were in conformance with regulations and rules therefore as required in the current manual of survey instructions of the United States Department of the Interior, Bureau of Land Management or by a decree of a Court of Law and/or that the corner points mentioned in lines 3, 4 and 5 above were in conformance with the rules of the Michigan Board of Land Surveyors or by a Decree of a Court of Law; established, re-established, monumented, re-monumented, recovered, found as expressed below:

**NOTE: Not more than 4 corners, all in the same town and range, may be recorded on this certificate.**



**A. Description of original monument and accessories and/or subsequent restoration:**

Date	Description	Surveyor/Engineer	Monument Type	Notes
K-11 1831	G.L.O. Notes	Mullett	Set Post	P.A. 345 1990 KENT COUNTY PEER APPROVED 7/25/96 CHAIRMAN <i>[Signature]</i>
1938	Witness Map	K.C. Surveyor	Stone	
1966	Witness Map	K.C. Surveyor	Iron	
1974	L.C.R.C. #640	Exxel Engineering	1/2" Iron	
1982	L.C.R.C. #2679	Jonker Land Surveys	Fnd. 1/2" Iron in Mon. Box / Set K.C. Monument in Mon. Box	
1995	L.C.R.C. #8144	K. Breitels	K.C. Monument in Mon. Box	

This corner was originally approved by the Kent County Remonumentation Peer Group and monumented by Rob Jonker on 3/5/82 and was recorded per L.C.R.C. #2679.

**B. Description of corner evidence found and/or method applied in restoring or reestablishing corner:**

K-11 Found a Standard Kent County Monument in a monument box 1' North of the C/L of 100th Street (bit.) running East and West per L.C.R.C.'s #2679 and #8144 as set by Rob Jonkers in place of 1/2" iron he found in a monument box which checked L.C.R.C. #640 and the 1938 and 1966 K.C. Surveyor's records.

**L.C.R.C. #2679**

Remon. tag on W side 14" Oak S 00° E 49.03'  
 Remon. tag on NE side 8" Walnut S 35° E 65.42'

**L.C.R.C. #8144**

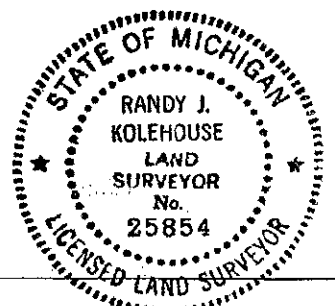
Nail & KC Remon. tag W. side 20" Oak S 00° E 49.03'  
 Nail & KC Remon. tag NE side 16" Walnut S 35° E 65.38'  
 Nail & KC Remon. tag SE side 16" Elm N 40° E 37.79'  
 Nail & KC Remon. tag NW side 10" Poplar S 70° W 77.02'

The selected location is accepted by me and is generally accepted by professional surveyors as the best available evidence of the position of the original corner.

**C. Description of monument for corner and accessories established to perpetuate locating the position of the corner:**

K-11 Standard Kent County Monument in a Monument Box

- Nail & K.C. remon. tag on W side 20" Oak S 00° E 49.03'
- Nail & K.C. remon. tag on NE side 16" Walnut S 35° E 65.38'
- Nail & K.C. remon. tag on SE side 16" Elm N 40° E 37.79'
- Nail & K.C. remon. tag on NW side 10" Poplar S 70° W 77.02'



Signed by *Randy J. Kolehouse*  
 EARTH TECH

Date 10/8/96

Surveyor's Michigan License No. 25854