

FEB 14 1997

COMMISSION

\$7.00
\$2.00

LAND CORNER RECORDATION CERTIFICATE
Filing Requirement of Act 74, Mich. P.A. 1970
KENT COUNTY REMONUMENTATION

For corners in

Kent (County)	Located in: Caledonia Township	Corner Code #
1. Public Land Survey	T <u>5N</u> R <u>10W</u>	<u>L-5</u>
	T _____ R _____	_____
	T _____ R _____	_____
	T _____ R _____	_____
2. Property Controlling in Section	S _____ T _____ R _____	_____
	S _____ T _____ R _____	_____
3. Miscellaneous Property in Sec.	S _____ T _____ R _____	_____
	S _____ T _____ R _____	_____

REG. OF DEEDS

Lucy Bond

96 NOV -8 AM 9:24

STATE OF MICHIGAN
COUNTY OF KENT
RECEIVED FOR RECORD

9565

Register of Deeds Stamp & File Number

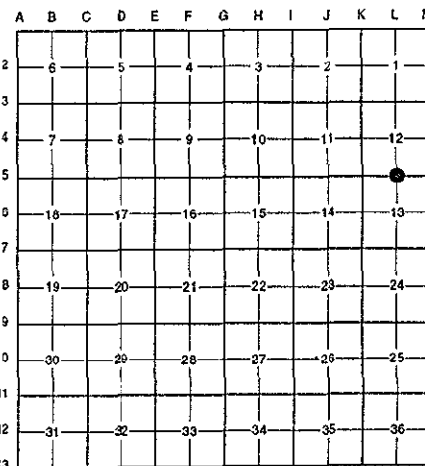
- 4. Lot No. _____, Recorded Plat _____
- 5. Private Claims _____

I, Randy Kolehouse, in a field survey on April 30 19 96, do hereby certify that under requirements of P.A. 74 Michigan P.A. of 1970, the corner points mentioned in lines 1 and 2 above were in conformance with regulations and rules therefore as required in the current manual of survey instructions of the United States Department of the interior, Bureau of Land Management or by a decree of a Court of Law and/or that the corner points mentioned in lines 3, 4 and 5 above were in conformance with the rules of the Michigan Board of Land Surveyors or by a Decree of a Court of Law; established, re-established, monumented, re-monumented, recovered, found as expressed below:

NOTE: Not more than 4 corners, all in the same town and range, may be recorded on this certificate.

A. Description of original monument and accessories and/or subsequent restoration:

L-5	1831	G.L.O. Notes	Mullett	Set Post	P.A. 345 1990 KENT COUNTY
	1904-28	Notes	Williams & Works	Iron	PEER APPROVED
	1965	Witness Map	K.C. Surveyor	Iron	CHAIRMAN <i>Randy Kolehouse</i>
	1976	L.C.R.C. #3375	D. Ankrom	3/4" Rebar	
	1985	L.C.R.C. #4393	T. Chettleburgh	Fnd. 3/4" Iron Bar / Set K.C. Monument	
	1995	L.C.R.C. #8149	K. Breitels	K.C. Monument	



This corner was originally approved by the Kent County Remonumentation Peer Group and monumented by T. Chettleburgh on 5/7/85 and was recorded per L.C.R.C. #4393.

B. Description of corner evidence found and/or method applied in restoring or reestablishing corner:

L-5 Found a Standard Kent County Monument 2' North of the C/L of 76th Street running East and West on line of a fence row to the South per L.C.R.C.'s #4393 and #8149 as set by T. Chettleburgh in place of a 3/4" iron bar and stones 14" deep which checked L.C.R.C. #3375 and the K.C. Surveyor's records.

L.C.R.C. #4393

L.C.R.C. #8149

- Nail in SE side 37" Oak N 72° E 79.84'
- Nail in NE side 12" Hickory S 62° E 56.29'
- Nail in W side 46" Maple S 00° E 23.62'
- Nail in SE side Power Pole S 68° W 72.23'
- Nail in SW side 36" Oak N 64° W 56.28'
- Nail in S side 30" Oak N 39° W 29.51'

- Nail & KC Remon. tag W. side Power Pole N 06° E 47.12'
- Nail & KC Remon. tag SE side 44" Oak N 72° E 79.90'
- Nail & KC Remon. tag NE side 12" Stump S 62° E 56.29'
- Nail & KC Remon. tag W. side 56" Maple S 00° E 23.68'
- Nail & KC Remon. tag SE side Power Pole S 68° W 72.23'
- Nail & KC Remon. tag SW side 48" Oak N 64° W 56.34'
- Nail & KC Remon. tag S. side 36" Oak N 39° W 29.53'

The selected location is accepted by me and is generally accepted by professional surveyors as the best available evidence of the position of the original corner.

C. Description of monument for corner and accessories established to perpetuate locating the position of the corner.

- L-5 Standard Kent County Monument
- Nail & K.C. remon. tag on W side P. pole N 06° E 47.12'
 - Nail & K.C. remon. tag on SE side 44" Oak N 72° E 79.90'
 - Nail & K.C. remon. tag on NE side 12" Stump S 62° E 56.29'
 - Nail & K.C. remon. tag on W side 56" Maple S 00° E 23.68'
 - Nail & K.C. remon. tag on SE side P. pole S 68° W 72.23'
 - Nail & K.C. remon. tag on SW side 48" Oak N 64° W 56.34'
 - Nail & K.C. remon. tag on S side 36" Oak N 39° W 29.53'

Signed by *Randy J Kolehouse*

Date 10/8/96

Surveyor's Michigan License No. 25854

